

Anti-14-3-3 sigma / Stratifin Antibody (Internal), Biotinylated
Catalog # AF4281a**Specification**

Anti-14-3-3 sigma / Stratifin Antibody (Internal), Biotinylated - Product Information

Application	WB
Primary Accession	P31947
Other Accession	2810 , NP_006133.1 , 55948 , 313017
Reactivity	Human, Mouse
Predicted	Human, Mouse, Rat, Pig, Dog
Calculated MW	27774

Anti-14-3-3 sigma / Stratifin Antibody (Internal), Biotinylated - Additional Information**Gene ID** 2810**Other Names**

cancer; disease; epithelial marker

Storage

Maintain refrigerated at 2-8°C for up to 6 months. For long term storage store at -20°C in small aliquots to prevent freeze-thaw cycles.

Precautions

Anti-14-3-3 sigma / Stratifin Antibody (Internal), Biotinylated is for research use only and not for use in diagnostic or therapeutic procedures.

Anti-14-3-3 sigma / Stratifin Antibody (Internal), Biotinylated - Protein Information**Name** SFN**Synonyms** HME1**Function**

Adapter protein implicated in the regulation of a large spectrum of both general and specialized signaling pathways. Binds to a large number of partners, usually by recognition of a phosphoserine or phosphothreonine motif. Binding generally results in the modulation of the activity of the binding partner. When bound to KRT17, regulates protein synthesis and epithelial cell growth by stimulating Akt/mTOR pathway. May also regulate MDM2 autoubiquitination and degradation and thereby activate p53/TP53.

Cellular Location

Cytoplasm. Nucleus. Secreted. Note=May be secreted by a non-classical secretory pathway

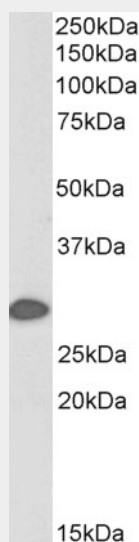
Tissue Location

Present mainly in tissues enriched in stratified squamous keratinizing epithelium

Anti-14-3-3 sigma / Stratifin Antibody (Internal), Biotinylated - Protocols

Provided below are standard protocols that you may find useful for product applications.

- [Western Blot](#)
- [Blocking Peptides](#)
- [Dot Blot](#)
- [Immunohistochemistry](#)
- [Immunofluorescence](#)
- [Immunoprecipitation](#)
- [Flow Cytometry](#)
- [Cell Culture](#)

Anti-14-3-3 sigma / Stratifin Antibody (Internal), Biotinylated - Images

Biotinylated antibody (0.1 µg/ml) staining of Mouse Skin lysate (35 µg protein in RIPA buffer), exactly mirroring its parental non-biotinylated product. Primary incubation was 1 hour. Detected by chemiluminescence, using streptavidin-HRP and using NAP blocker as a substitute for skimmed milk.