

Anti-ALT1 / GPT1 Antibody (aa391-405)
Catalog # AF4285a**Specification**

Anti-ALT1 / GPT1 Antibody (aa391-405) - Product Information

Application	WB
Primary Accession	P24298
Other Accession	2875 , NP_005300.1
Reactivity	Human
Predicted	Human
Calculated MW	54637

Anti-ALT1 / GPT1 Antibody (aa391-405) - Additional Information**Gene ID** 2875**Other Names**

acetylated, 6-(pyridoxal phosphate)lysine

Storage

Maintain refrigerated at 2-8°C for up to 6 months. For long term storage store at -20°C in small aliquots to prevent freeze-thaw cycles.

Precautions

Anti-ALT1 / GPT1 Antibody (aa391-405) is for research use only and not for use in diagnostic or therapeutic procedures.

Anti-ALT1 / GPT1 Antibody (aa391-405) - Protein Information**Name** GPT**Synonyms** AAT1, GPT1**Function**

Catalyzes the reversible transamination between alanine and 2-oxoglutarate to form pyruvate and glutamate. Participates in cellular nitrogen metabolism and also in liver gluconeogenesis starting with precursors transported from skeletal muscles (By similarity).

Cellular Location

Cytoplasm.

Tissue Location

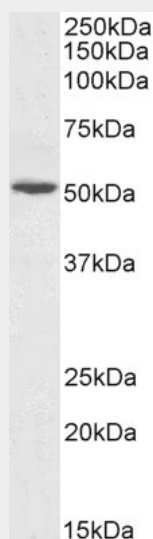
Liver, kidney, heart, and skeletal muscles. Expressed at moderate levels in the adipose tissue

Anti-ALT1 / GPT1 Antibody (aa391-405) - Protocols

Provided below are standard protocols that you may find useful for product applications.

- [Western Blot](#)
- [Blocking Peptides](#)
- [Dot Blot](#)
- [Immunohistochemistry](#)
- [Immunofluorescence](#)
- [Immunoprecipitation](#)
- [Flow Cytometry](#)
- [Cell Culture](#)

Anti-ALT1 / GPT1 Antibody (aa391-405) - Images



Antibody (0.1 µg/ml) staining of Human Liver lysate (35 µg protein in RIPA buffer). Primary incubation was 1 hour. Detected by chemiluminescence.