

CD31 / PECAM-1 (Endothelial Cell Marker) Mouse Monoclonal Antibody [Clone C31.7]
Purified Mouse Monoclonal Antibody
Catalog # AH10373**Specification****CD31 / PECAM-1 (Endothelial Cell Marker) Mouse Monoclonal Antibody [Clone C31.7] - Product Information**

| | |
|-------------------|---|
| Application | IF, FC |
| Primary Accession | P16284 |
| Reactivity | Human, Rabbit, Monkey |
| Host | Mouse |
| Clonality | Monoclonal |
| Isotype | IgG1, kappa |
| Calculated MW | ~100kDa (endothelium) and ~130kDa (platelets) KDa |

CD31 / PECAM-1 (Endothelial Cell Marker) Mouse Monoclonal Antibody [Clone C31.7] - Additional Information**Gene ID** 5175**Other Names**

EndoCAM; PECA1; Platelet Endothelial Cell Adhesion Molecule 1; GPIIA'

Target/Specificity

Recombinant full-length human CD31 protein

Format

0.5ml at 100ug/ml with BSA and azide

Storage

Store at 2 to 8°C. Antibody is stable for 24 months.

Precautions

CD31 / PECAM-1 (Endothelial Cell Marker) Mouse Monoclonal Antibody [Clone C31.7] is for research use only and not for use in diagnostic or therapeutic procedures.

CD31 / PECAM-1 (Endothelial Cell Marker) Mouse Monoclonal Antibody [Clone C31.7] - Protein Information**Name** PECAM1**Function**

Cell adhesion molecule which is required for leukocyte transendothelial migration (TEM) under most inflammatory conditions (PubMed:19342684, PubMed:17580308). Tyr-690 plays a critical role in TEM and is required for efficient trafficking of PECAM1 to and from the lateral border recycling compartment (LBRC) and is also

essential for the LBRC membrane to be targeted around migrating leukocytes (PubMed:19342684). Trans-homophilic interaction may play a role in endothelial cell-cell adhesion via cell junctions (PubMed:27958302). Heterophilic interaction with CD177 plays a role in transendothelial migration of neutrophils (PubMed:17580308). Homophilic ligation of PECAM1 prevents macrophage-mediated phagocytosis of neighboring viable leukocytes by transmitting a detachment signal (PubMed:12110892). Promotes macrophage-mediated phagocytosis of apoptotic leukocytes by tethering them to the phagocytic cells; PECAM1-mediated detachment signal appears to be disabled in apoptotic leukocytes (PubMed:12110892). Modulates bradykinin receptor BDKRB2 activation (PubMed:18672896). Regulates bradykinin- and hyperosmotic shock-induced ERK1/2 activation in endothelial cells (PubMed:18672896). Induces susceptibility to atherosclerosis (By similarity).

Cellular Location

Cell membrane; Single-pass type I membrane protein. Note=Cell surface expression on neutrophils is down-regulated upon fMLP or CXCL8/IL8- mediated stimulation. [Isoform Delta15]: Cell junction. Note=Localizes to the lateral border recycling compartment (LBRC) and recycles from the LBRC to the junction in resting endothelial cells

Tissue Location

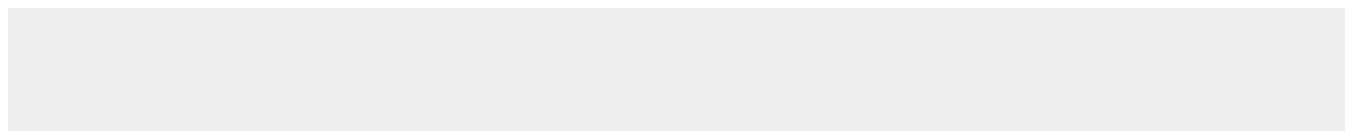
Expressed on platelets and leukocytes and is primarily concentrated at the borders between endothelial cells (PubMed:18388311, PubMed:21464369). Expressed in human umbilical vein endothelial cells (HUVECs) (at protein level) (PubMed:19342684, PubMed:17580308). Expressed on neutrophils (at protein level) (PubMed:17580308). Isoform Long predominates in all tissues examined (PubMed:12433657). Isoform Delta12 is detected only in trachea (PubMed:12433657). Isoform Delta14-15 is only detected in lung (PubMed:12433657). Isoform Delta14 is detected in all tissues examined with the strongest expression in heart (PubMed:12433657). Isoform Delta15 is expressed in brain, testis, ovary, cell surface of platelets, human umbilical vein endothelial cells (HUVECs), Jurkat T- cell leukemia, human erythroleukemia (HEL) and U-937 histiocytic lymphoma cell lines (at protein level) (PubMed:12433657, PubMed:18388311).

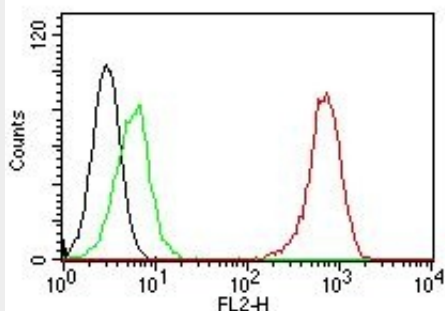
CD31 / PECAM-1 (Endothelial Cell Marker) Mouse Monoclonal Antibody [Clone C31.7] - Protocols

Provided below are standard protocols that you may find useful for product applications.

- [Western Blot](#)
- [Blocking Peptides](#)
- [Dot Blot](#)
- [Immunohistochemistry](#)
- [Immunofluorescence](#)
- [Immunoprecipitation](#)
- [Flow Cytometry](#)
- [Cell Culture](#)

CD31 / PECAM-1 (Endothelial Cell Marker) Mouse Monoclonal Antibody [Clone C31.7] - Images





Flow Cytometric analysis of human CD31 on Jurkat Cells. Black: Cells alone; Green: Isotype Control; Red: PE-labeled CD31 MAb (C31.7).

CD31 / PECAM-1 (Endothelial Cell Marker) Mouse Monoclonal Antibody [Clone C31.7] - References

1. Gratzinger D et. al. Am J Clin Pathol 131:264-278 (2009).