

**Fibronectin Antibody - With BSA and Azide**  
**Mouse Monoclonal Antibody [Clone SPM246 ]**  
**Catalog # AH10468****Specification****Fibronectin Antibody - With BSA and Azide - Product Information**

Application	,14,3,4,
Primary Accession	<a href="#">P02751</a>
Other Accession	<a href="#">2335</a> , <a href="#">203717</a>
Reactivity	Human, Mouse, Rat, Pig
Host	Mouse
Clonality	Monoclonal
Isotype	Mouse / IgG1, kappa
Calculated MW	220kDa (monomer); 440kDa (dimer) KDa

**Fibronectin Antibody - With BSA and Azide - Additional Information****Gene ID** 2335**Other Names**

Fibronectin, FN, Cold-insoluble globulin, CIG, Anastellin, Ugl-Y1, Ugl-Y2, Ugl-Y3, FN1, FN

**Format**

200ug/ml of Ab purified from Bioreactor Concentrate by Protein A/G. Prepared in 10mM PBS with 0.05% BSA &amp; 0.05% azide. Also available WITHOUT BSA &amp; azide at 1.0mg/ml.

**Storage**

Store at 2 to 8°C. Antibody is stable for 24 months.

**Precautions**

Fibronectin Antibody - With BSA and Azide is for research use only and not for use in diagnostic or therapeutic procedures.

**Fibronectin Antibody - With BSA and Azide - Protein Information****Name** FN1 ([HGNC:3778](#))**Synonyms** FN**Function**

Fibronectins bind cell surfaces and various compounds including collagen, fibrin, heparin, DNA, and actin (PubMed: [3024962](http://www.uniprot.org/citations/3024962), PubMed: [3900070](http://www.uniprot.org/citations/3900070), PubMed: [3593230](http://www.uniprot.org/citations/3593230), PubMed: [7989369](http://www.uniprot.org/citations/7989369)). Fibronectins are involved in cell adhesion, cell motility, opsonization, wound healing, and maintenance of cell shape (PubMed: [3024962](http://www.uniprot.org/citations/3024962), PubMed: [3024962](http://www.uniprot.org/citations/3024962), PubMed: [3024962](http://www.uniprot.org/citations/3024962)).

[3900070](http://www.uniprot.org/citations/3900070), PubMed: [3593230](http://www.uniprot.org/citations/3593230), PubMed: [7989369](http://www.uniprot.org/citations/7989369)). Involved in osteoblast compaction through the fibronectin fibrillogenesis cell-mediated matrix assembly process, essential for osteoblast mineralization (By similarity). Participates in the regulation of type I collagen deposition by osteoblasts (By similarity). Acts as a ligand for the LILRB4 receptor, inhibiting FCGR1A/CD64-mediated monocyte activation (PubMed: [34089617](http://www.uniprot.org/citations/34089617)).

**Cellular Location**

Secreted, extracellular space, extracellular matrix. Secreted {ECO:0000250|UniProtKB:P11276}

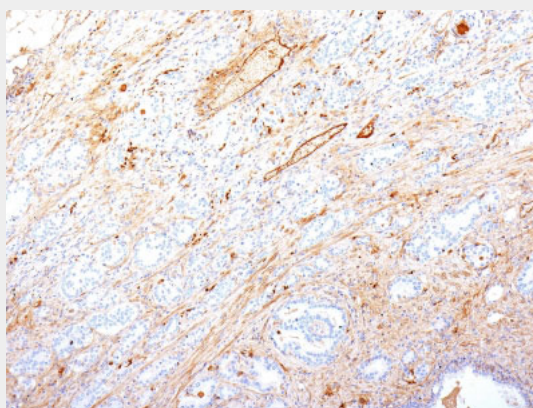
**Tissue Location**

Expressed in the inner limiting membrane and around blood vessels in the retina (at protein level) (PubMed:29777959) Plasma FN (soluble dimeric form) is secreted by hepatocytes. Cellular FN (dimeric or cross-linked multimeric forms), made by fibroblasts, epithelial and other cell types, is deposited as fibrils in the extracellular matrix. Ugl-Y1, Ugl-Y2 and Ugl-Y3 are found in urine (PubMed:17614963).

**Fibronectin Antibody - With BSA and Azide - Protocols**

Provided below are standard protocols that you may find useful for product applications.

- [Western Blot](#)
- [Blocking Peptides](#)
- [Dot Blot](#)
- [Immunohistochemistry](#)
- [Immunofluorescence](#)
- [Immunoprecipitation](#)
- [Flow Cytometry](#)
- [Cell Culture](#)

**Fibronectin Antibody - With BSA and Azide - Images**

Formalin-fixed, paraffin-embedded human Pancreatic Adenocarcinoma stained with Fibronectin Monoclonal Antibody (SPM246).

**Fibronectin Antibody - With BSA and Azide - Background**

Fibronectin is a soluble dimeric glycoprotein of 440kDa, which is present in cells, extracellular matrix, and blood. This MAb reacts with the cellular as well as plasma form of fibronectin. Reportedly, after iv administration, this MAb localizes to tumor vessels where it binds to the

underlying basement. Epitope recognized by this antibody is not accessible in normal tissues to the circulating MAb indicating that it can be used to specifically target tumor vessels in vivo. TV-1 is reportedly useful for delivering vasoactive agents to tumors to induce increased vascular permeability or blood flow prior to treatment with chemotherapeutic drugs or MAbs.

#### **Fibronectin Antibody - With BSA and Azide - References**

Epstein AL, et. al. Cancer Research, 1995, 55(12):2673-80