

**Cytokeratin 18 (KRT18) Antibody - With BSA and Azide**  
**Mouse Monoclonal Antibody [Clone SPM510 ]**  
**Catalog # AH10572**

**Specification**

---

**Cytokeratin 18 (KRT18) Antibody - With BSA and Azide - Product Information**

|                   |   |
|-------------------|---|
| Application       | ,1,14,3,4,                                    |
| Primary Accession | <a href="#">P05783</a>                        |
| Other Accession   | <a href="#">3875</a> , <a href="#">406013</a> |
| Reactivity        | Human   |
| Host              | Mouse   |
| Clonality         | Monoclonal                                    |
| Isotype           | Mouse / IgG1, kappa                           |
| Calculated MW     | 45kDa KDa                                     |

**Cytokeratin 18 (KRT18) Antibody - With BSA and Azide - Additional Information**

**Gene ID** 3875

**Other Names**

Keratin, type I cytoskeletal 18, Cell proliferation-inducing gene 46 protein, Cytokeratin-18, CK-18, Keratin-18, K18, KRT18, CYK18

**Format**

200ug/ml of Ab purified from Bioreactor Concentrate by Protein A/G. Prepared in 10mM PBS with 0.05% BSA & 0.05% azide. Also available WITHOUT BSA & azide at 1.0mg/ml.

**Storage**

Store at 2 to 8°C. Antibody is stable for 24 months.

**Precautions**

Cytokeratin 18 (KRT18) Antibody - With BSA and Azide is for research use only and not for use in diagnostic or therapeutic procedures.

**Cytokeratin 18 (KRT18) Antibody - With BSA and Azide - Protein Information**

**Name** KRT18

**Synonyms** CYK18

**Function**

Involved in the uptake of thrombin-antithrombin complexes by hepatic cells (By similarity). When phosphorylated, plays a role in filament reorganization. Involved in the delivery of mutated CFTR to the plasma membrane. Together with KRT8, is involved in interleukin-6 (IL-6)-mediated barrier protection.

**Cellular Location**

Nucleus matrix {ECO:0000250|UniProtKB:Q5BJY9}. Cytoplasm, perinuclear region. Nucleus,

nucleolus. Cytoplasm {ECO:0000250|UniProtKB:Q5BJY9}

#### **Tissue Location**

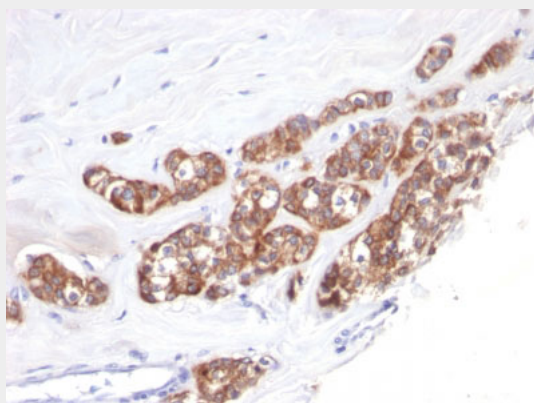
Expressed in colon, placenta, liver and very weakly in exocervix. Increased expression observed in lymph nodes of breast carcinoma.

#### **Cytokeratin 18 (KRT18) Antibody - With BSA and Azide - Protocols**

Provided below are standard protocols that you may find useful for product applications.

- [Western Blot](#)
- [Blocking Peptides](#)
- [Dot Blot](#)
- [Immunohistochemistry](#)
- [Immunofluorescence](#)
- [Immunoprecipitation](#)
- [Flow Cytometry](#)
- [Cell Culture](#)

#### **Cytokeratin 18 (KRT18) Antibody - With BSA and Azide - Images**



Formalin-fixed, paraffin-embedded human Breast Carcinoma stained with Cytokeratin 18 Monoclonal Antibody (SPM510).

#### **Cytokeratin 18 (KRT18) Antibody - With BSA and Azide - Background**

This MAb reacts with a wide variety of simple epithelia. It does not react with stratified squamous epithelia. It reacts with epithelial tumors of the gastrointestinal tract, lung, breast, pancreas, ovary, and thyroid. Cytokeratin 18, which belongs to the type A (acidic) subfamily of low molecular weight keratins, exists in combination with cytokeratin 8. It was reported that tissues from gastrointestinal tract are positive for both cytokeratin 8 and 18 but do not contain cytokeratin 14. Tissues from gastrointestinal tract, respiratory tract and urogenital tract, as well as endocrine and exocrine tissues and mesothelial cells are positive for cytokeratin 18.

#### **Cytokeratin 18 (KRT18) Antibody - With BSA and Azide - References**

Lane EB et. al. Sem Cancer Biol 1:165-179 (1990).2. Lauerova et. al. Hybridoma 7:495-504 (1988)