

MUC2 (Mucin 2) Antibody - With BSA and Azide
Mouse Monoclonal Antibody [Clone SPM296]
Catalog # AH10605**Specification****MUC2 (Mucin 2) Antibody - With BSA and Azide - Product Information**

Application	,14,3,4,
Primary Accession	Q02817
Other Accession	4583 , 315
Reactivity	Human
Host	Mouse
Clonality	Monoclonal
Isotype	Mouse / IgG1, kappa
Calculated MW	520kDa KDa

MUC2 (Mucin 2) Antibody - With BSA and Azide - Additional Information**Gene ID** 4583**Other Names**

Mucin-2, MUC-2, Intestinal mucin-2, MUC2, SMUC

Format

200ug/ml of Ab purified from Bioreactor Concentrate by Protein A/G. Prepared in 10mM PBS with 0.05% BSA & 0.05% azide. Also available WITHOUT BSA & azide at 1.0mg/ml.

Storage

Store at 2 to 8°C. Antibody is stable for 24 months.

Precautions

MUC2 (Mucin 2) Antibody - With BSA and Azide is for research use only and not for use in diagnostic or therapeutic procedures.

MUC2 (Mucin 2) Antibody - With BSA and Azide - Protein Information**Name** MUC2 {ECO:0000303|PubMed:8300571, ECO:0000312|HGNC:HGNC:7512}**Function**

Coats the epithelia of the intestines and other mucus membrane-containing organs to provide a protective, lubricating barrier against particles and infectious agents at mucosal surfaces (PubMed:17058067, PubMed:19432394, PubMed:33031746). Major constituent of the colon mucus, which is mainly formed by large polymeric networks of MUC2 secreted by goblet cells that cover the exposed surfaces of intestine (PubMed:19432394, PubMed:33031746). MUC2 networks form hydrogels that guard the underlying epithelium from pathogens and other

hazardous matter entering from the outside world, while permitting nutrient absorption and gas exchange (PubMed:33031746, PubMed:36206754). Acts as a divalent copper chaperone that protects intestinal cells from copper toxicity and facilitates nutritional copper uptake into cells (PubMed:36206754). Binds both Cu(2+) and its reduced form, Cu(1+), at two juxtaposed binding sites: Cu(2+), once reduced to Cu(1+) by vitamin C (ascorbate) or other dietary antioxidants, transits to the other binding site (PubMed:36206754). MUC2-bound Cu(1+) is protected from oxidation in aerobic environments, and can be released for nutritional delivery to cells (PubMed:36206754). Mucin gels store antimicrobial molecules that participate in innate immunity (PubMed:33031746). Mucin glycoproteins also house and feed the microbiome, lubricate tissue surfaces, and may facilitate the removal of contaminants and waste products from the body (PubMed:33031746). Goblet cells synthesize two forms of MUC2 mucin that differ in branched chain O-glycosylation and the site of production in the colon: a (1) 'thick' mucus that wraps the microbiota to form fecal pellets is produced in the proximal, ascending colon (By similarity). 'Thick' mucus transits along the descending colon and is lubricated by a (2) 'thin' MUC2 mucus produced in the distal colon which adheres to the 'thick' mucus (By similarity).

Cellular Location

Secreted. Note=In the intestine, secreted into the inner and outer mucus layers (By similarity). Before secretion, mucin polymers are stored in dedicated secretory vesicles (PubMed:33031746). {ECO:0000250|UniProtKB:Q80Z19, ECO:0000269|PubMed:33031746}

Tissue Location

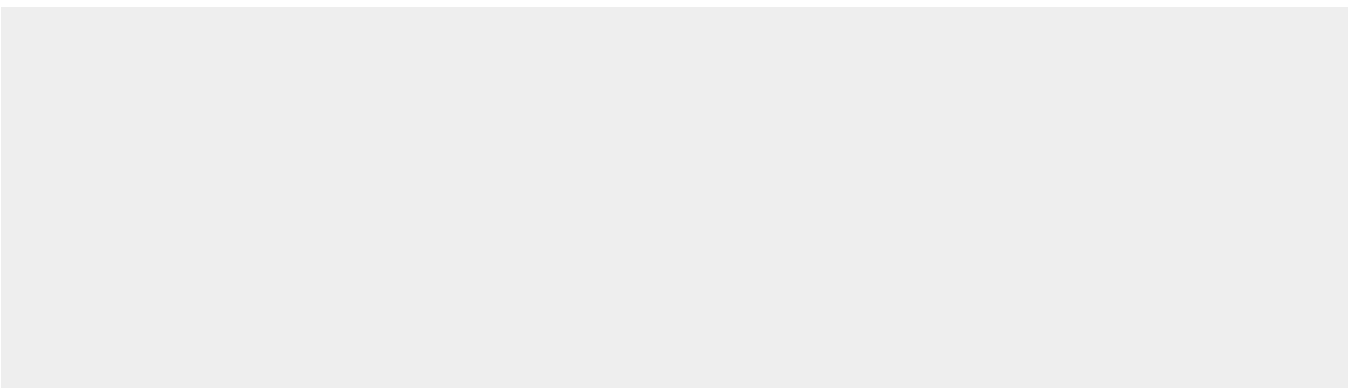
Colon, small intestine, colonic tumors, bronchus, cervix and gall bladder.

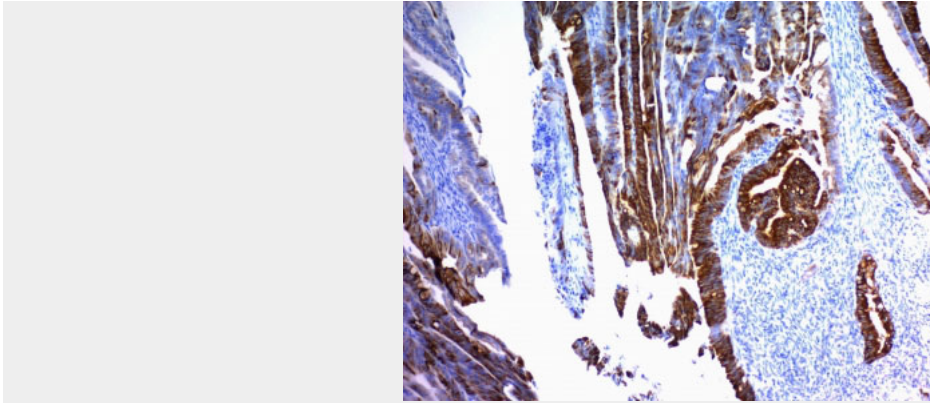
MUC2 (Mucin 2) Antibody - With BSA and Azide - Protocols

Provided below are standard protocols that you may find useful for product applications.

- [Western Blot](#)
- [Blocking Peptides](#)
- [Dot Blot](#)
- [Immunohistochemistry](#)
- [Immunofluorescence](#)
- [Immunoprecipitation](#)
- [Flow Cytometry](#)
- [Cell Culture](#)

MUC2 (Mucin 2) Antibody - With BSA and Azide - Images





Formalin-fixed, paraffin-embedded human Colon Carcinoma stained with MUC2 Monoclonal Antibody (SPM296).

MUC2 (Mucin 2) Antibody - With BSA and Azide - Background

Recognizes a single glycoprotein of 520kDa, identified as mucin 2 (MUC2). This MAb shows no cross-reaction with human milk fat globule membranes, MUC1, or MUC3. Mucins are high molecular weight glycoproteins, which constitute the major component of the mucus layer that protects the gastric epithelium. MUC2 is specifically expressed in goblet cells of the small intestine & colon; in about 65% of colonic carcinomas and about 40% of gastric carcinomas. MUC2 is rarely expressed outside of the GI tract with the exceptions of mucinous carcinoma of breast and clear cell-type carcinomas of the ovary.

MUC2 (Mucin 2) Antibody - With BSA and Azide - References

Xing PX, et. al. Journal of the National Cancer Institute, 1992, 84(9):699-703