

**Uroplakin 3A (Bladder Carcinoma Marker) Antibody - With BSA and Azide**  
**Rabbit Polyclonal Antibody**  
**Catalog # AH10806**

**Specification**

---

**Uroplakin 3A (Bladder Carcinoma Marker) Antibody - With BSA and Azide - Product Information**

|                   |                                               |
|-------------------|-----------------------------------------------|
| Application       | ,1,3,4,                                       |
| Primary Accession | <a href="#">075631</a>                        |
| Other Accession   | <a href="#">7380</a> , <a href="#">632787</a> |
| Reactivity        | Human                                         |
| Host              | Rabbit                                        |
| Clonality         | Polyclonal                                    |
| Isotype           | Rabbit / IgG                                  |
| Calculated MW     | -30kDa KDa                                    |

**Uroplakin 3A (Bladder Carcinoma Marker) Antibody - With BSA and Azide - Additional Information**

**Gene ID** 7380

**Other Names**

Uroplakin-3a, UP3a, Uroplakin III, UPIII, UPK3A, UPK3

**Format**

200ug/ml of Ab purified from rabbit anti-serum by Protein A. Prepared in 10mM PBS with 0.05% BSA & 0.05% azide. Also available WITHOUT BSA at 1.0mg/ml.

**Storage**

Store at 2 to 8°C. Antibody is stable for 24 months.

**Precautions**

Uroplakin 3A (Bladder Carcinoma Marker) Antibody - With BSA and Azide is for research use only and not for use in diagnostic or therapeutic procedures.

**Uroplakin 3A (Bladder Carcinoma Marker) Antibody - With BSA and Azide - Protein Information**

**Name** UPK3A

**Synonyms** UPK3

**Function**

Component of the asymmetric unit membrane (AUM); a highly specialized biomembrane elaborated by terminally differentiated urothelial cells. May play an important role in AUM-cytoskeleton interaction in terminally differentiated urothelial cells. It also contributes to the formation of urothelial glycocalyx which may play an important role in preventing bacterial adherence (By similarity).

### Cellular Location

Endoplasmic reticulum membrane; Single-pass type I membrane protein. Note=Heterodimer formation with UPK1B is a prerequisite to exit out of the endoplasmic reticulum (ER).

### Tissue Location

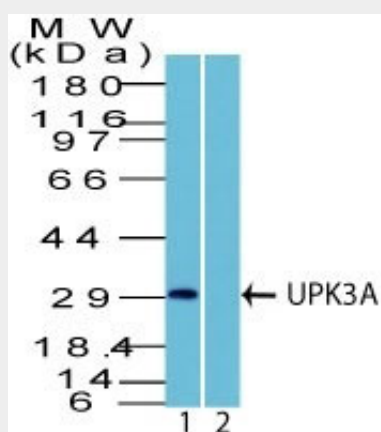
Expressed in ureter..

### Uroplakin 3A (Bladder Carcinoma Marker) Antibody - With BSA and Azide - Protocols

Provided below are standard protocols that you may find useful for product applications.

- [Western Blot](#)
- [Blocking Peptides](#)
- [Dot Blot](#)
- [Immunohistochemistry](#)
- [Immunofluorescence](#)
- [Immunoprecipitation](#)
- [Flow Cytometry](#)
- [Cell Culture](#)

### Uroplakin 3A (Bladder Carcinoma Marker) Antibody - With BSA and Azide - Images



Western Blot in human HEK293 Lysate in 1) absence and 2) presence of immunizing peptide using UPK3A Rabbit Polyclonal Antibody.

### Uroplakin 3A (Bladder Carcinoma Marker) Antibody - With BSA and Azide - Background

Uroplakin-3A (UPK3A) is a component of the asymmetric unit membrane (AUM). It is a highly specialized bio-membrane made by terminally differentiated urothelial cells. The protein may play an important role in AUM-cytoskeleton interaction in terminally differentiated urothelial cells. UPK3A also contributes to the formation of urothelial glycocalyx, which may play an important role in preventing bacterial adherence through FimH bacterial protein binding leading to bladder infection. UPK3A has been shown as a helpful marker for the detection of bladder cancer.

### Uroplakin 3A (Bladder Carcinoma Marker) Antibody - With BSA and Azide - References

Lai Y et. al. 2010. UPK3A: a promising novel urinary marker for the detection of bladder cancer. Urology 76, 514; 2009