

Mitochondria (Marker for Human Cells) Antibody - With BSA and Azide
Mouse Monoclonal Antibody [Clone SPM198]
Catalog # AH10945**Specification**

Mitochondria (Marker for Human Cells) Antibody - With BSA and Azide - Product Information

Application	,1,14,3,
Reactivity	Human
Host	Mouse
Clonality	Monoclonal
Isotype	Mouse / IgG1, kappa
Calculated MW	60kDa KDa

Mitochondria (Marker for Human Cells) Antibody - With BSA and Azide - Additional Information**Format**

200ug/ml of Ab purified from Bioreactor Concentrate by Protein A/G. Prepared in 10mM PBS with 0.05% BSA & 0.05% azide. Also available WITHOUT BSA at 1.0mg/ml.

Storage

Store at 2 to 8°C. Antibody is stable for 24 months.

Precautions

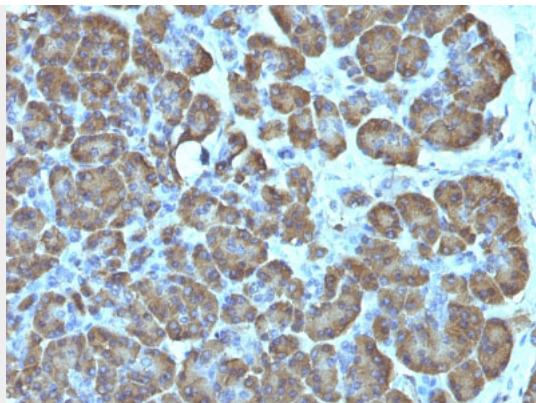
Mitochondria (Marker for Human Cells) Antibody - With BSA and Azide is for research use only and not for use in diagnostic or therapeutic procedures.

Mitochondria (Marker for Human Cells) Antibody - With BSA and Azide - Protein Information**Mitochondria (Marker for Human Cells) Antibody - With BSA and Azide - Protocols**

Provided below are standard protocols that you may find useful for product applications.

- [Western Blot](#)
- [Blocking Peptides](#)
- [Dot Blot](#)
- [Immunohistochemistry](#)
- [Immunofluorescence](#)
- [Immunoprecipitation](#)
- [Flow Cytometry](#)
- [Cell Culture](#)

Mitochondria (Marker for Human Cells) Antibody - With BSA and Azide - Images



Formalin-fixed, paraffin-embedded human Pancreas stained with Mitochondria Monoclonal Antibody (SPM198).

Mitochondria (Marker for Human Cells) Antibody - With BSA and Azide - Background

This MAb recognizes a 60kDa antigen associated with the mitochondria in human cells. It can be used to stain mitochondria in cell or tissue preparations and can be used as a mitochondrial marker in subcellular fractions. It produces a spaghetti-like pattern in normal and malignant cells. This antibody is an excellent marker for human cells in xenographic model research. It reacts specifically with human cells, including neurons and embryonic stem cells.

Mitochondria (Marker for Human Cells) Antibody - With BSA and Azide - References

Epstein, Alan L. and Clevenger, Charles V. In: Progress in Nonhistone Protein Research, Vol. 1, Isaac Bekhor, Ed. CRC Press, Boca Raton, FL, pp. 117-137, 1985