

**Myeloid Cell Marker (Macrophage / Granulocyte Marker) Antibody - With BSA and Azide
Mouse Monoclonal Antibody [Clone SPM250]
Catalog # AH10960**

Specification

**Myeloid Cell Marker (Macrophage / Granulocyte Marker) Antibody - With BSA and Azide -
Product Information**

Application	,14,3,4,
Reactivity	Human
Host	Mouse
Clonality	Monoclonal
Isotype	Mouse / IgG1
Calculated MW	Unknown KDa

**Myeloid Cell Marker (Macrophage / Granulocyte Marker) Antibody - With BSA and Azide -
Additional Information**

Format

200ug/ml of Ab purified from Bioreactor Concentrate by Protein A/G. Prepared in 10mM PBS with 0.05% BSA & 0.05% azide. Also available WITHOUT BSA & azide at 1.0mg/ml.

Storage

Store at 2 to 8°C. Antibody is stable for 24 months.

Precautions

Myeloid Cell Marker (Macrophage / Granulocyte Marker) Antibody - With BSA and Azide is for research use only and not for use in diagnostic or therapeutic procedures.

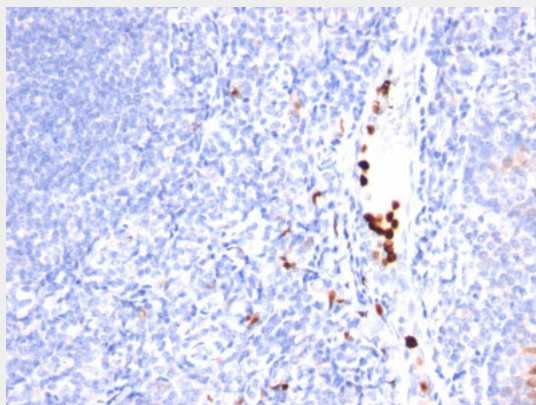
**Myeloid Cell Marker (Macrophage / Granulocyte Marker) Antibody - With BSA and Azide -
Protein Information**

**Myeloid Cell Marker (Macrophage / Granulocyte Marker) Antibody - With BSA and Azide -
Protocols**

Provided below are standard protocols that you may find useful for product applications.

- [Western Blot](#)
- [Blocking Peptides](#)
- [Dot Blot](#)
- [Immunohistochemistry](#)
- [Immunofluorescence](#)
- [Immunoprecipitation](#)
- [Flow Cytometry](#)
- [Cell Culture](#)

**Myeloid Cell Marker (Macrophage / Granulocyte Marker) Antibody - With BSA and Azide -
Images**



Formalin-fixed, paraffin-embedded human Tonsil stained with Granulocyte Monoclonal Antibody (SPM250).

Myeloid Cell Marker (Macrophage / Granulocyte Marker) Antibody - With BSA and Azide - Background

Recognizes an unidentified antigen in the cytoplasm of mature granulocytes. It shows no reactivity with any other cell type in human tissues. Markers of myeloid cells are useful in the identification of different levels of cellular differentiation. MAb BM-2 reacts with early precursor and mature forms of human myeloid cells. This MAb is useful for the detection of myeloid leukemias and granulocytic sarcomas. It can be used as a marker of granulocytes in normal tissues or inflammatory processes.

Myeloid Cell Marker (Macrophage / Granulocyte Marker) Antibody - With BSA and Azide - References

de Swart RL et al. Predominant infection of CD150+ lymphocytes and dendritic cells during measles virus infection of macaques. PLoS Pathog 3:e178 (2007).