

Cytokeratin, Basic (Type II or HMW) (Epithelial Marker) Antibody - With BSA and Azide
Mouse Monoclonal Antibody [Clone SPM116]
Catalog # AH10973

Specification

Cytokeratin, Basic (Type II or HMW) (Epithelial Marker) Antibody - With BSA and Azide - Product Information

| | |
|-------------------|--|
| Application | ,1,14,3,4, |
| Primary Accession | Q01546 |
| Other Accession | 51350 , 654392 |
| Reactivity | Human, Mouse, Rat, Rabbit, Monkey, Chicken, Cow, Dog |
| Host | Mouse |
| Clonality | Monoclonal |
| Isotype | Mouse / IgG1, kappa |
| Calculated MW | 67kDa (CK1); 64kDa (CK3); 59kDa (CK4); 58kDa (CK5); 56kDa (CK6); 52kDa (CK8) KDa |

Cytokeratin, Basic (Type II or HMW) (Epithelial Marker) Antibody - With BSA and Azide - Additional Information

Gene ID 51350

Other Names

Keratin, type II cytoskeletal 2 oral, Cytokeratin-2P, CK-2P, K2P, Keratin-76, K76, Type-II keratin Kb9, KRT76, KRT2B, KRT2P

Format

200ug/ml of Ab purified from Bioreactor Concentrate by Protein A/G. Prepared in 10mM PBS with 0.05% BSA & 0.05% azide. Also available WITHOUT BSA & azide at 1.0mg/ml.

Storage

Store at 2 to 8°C. Antibody is stable for 24 months.

Precautions

Cytokeratin, Basic (Type II or HMW) (Epithelial Marker) Antibody - With BSA and Azide is for research use only and not for use in diagnostic or therapeutic procedures.

Cytokeratin, Basic (Type II or HMW) (Epithelial Marker) Antibody - With BSA and Azide - Protein Information

Name KRT76

Synonyms KRT2B, KRT2P

Function

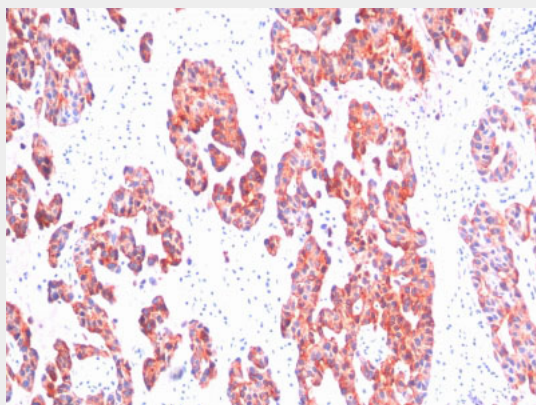
Probably contributes to terminal cornification.

Cytokeratin, Basic (Type II or HMW) (Epithelial Marker) Antibody - With BSA and Azide - Protocols

Provided below are standard protocols that you may find useful for product applications.

- [Western Blot](#)
- [Blocking Peptides](#)
- [Dot Blot](#)
- [Immunohistochemistry](#)
- [Immunofluorescence](#)
- [Immunoprecipitation](#)
- [Flow Cytometry](#)
- [Cell Culture](#)

Cytokeratin, Basic (Type II or HMW) (Epithelial Marker) Antibody - With BSA and Azide - Images



Formalin-fixed, paraffin-embedded human Breast Carcinoma stained with Cytokeratin, HMW Monoclonal Antibody (SPM116).

Cytokeratin, Basic (Type II or HMW) (Epithelial Marker) Antibody - With BSA and Azide - Background

This MAb recognizes basic (Type II or HMW) cytokeratins, which include 67kDa (CK1); 64kDa (CK3); 59kDa (CK4); 58kDa (CK5); 56kDa (CK6); 52kDa (CK8). Twenty human keratins are resolved with two-dimensional gel electrophoresis into acidic (pI 6.0) subfamilies. The acidic keratins have molecular weights (MW) of 56.5, 55, 51, 50, 50 α [™], 48, 46, 45, and 40kDa. This MAb recognizes the 65-67, 64, 59, 58, 56, and 52kDa keratins of basic subfamily. Many studies have shown the usefulness of keratins as markers in cancer research and tumor diagnosis. SPM115/SPM116 is a broad spectrum anti pan-keratin antibody cocktail, which differentiates epithelial tumors from non-epithelial tumors e.g. squamous vs. adenocarcinoma of the lung, liver carcinoma, breast cancer, and esophageal cancer.

Cytokeratin, Basic (Type II or HMW) (Epithelial Marker) Antibody - With BSA and Azide - References

Woodcock-Mitchell J et. al. Journal of Cell Biology 1982;95:580-8. | Tseng SCG et. al. Cell 1982; 30361