

**CD15 / FUT4 (Reed-Sternberg Cell Marker) Antibody - With BSA and Azide**  
**Mouse Monoclonal Antibody [Clone FUT4/815 + BRA-4F1 ]**  
**Catalog # AH11277**

**Specification**

**CD15 / FUT4 (Reed-Sternberg Cell Marker) Antibody - With BSA and Azide - Product Information**

Application	,2,3,4,
Primary Accession	<a href="#">P22083</a>
Other Accession	<a href="#">2526</a> , <a href="#">654379</a>
Reactivity	Human
Host	Mouse
Clonality	Monoclonal
Isotype	Mouse / IgM's
Calculated MW	~220kDa (Glycoprotein) KDa

**CD15 / FUT4 (Reed-Sternberg Cell Marker) Antibody - With BSA and Azide - Additional Information**

**Gene ID** 2526

**Other Names**

Alpha-(1, 3)-fucosyltransferase 4, 2.4.1.-, ELAM-1 ligand fucosyltransferase, Fucosyltransferase 4, Fucosyltransferase IV, Fuc-TIV, FucT-IV, Galactoside 3-L-fucosyltransferase, FUT4, ELFT, FCT3A

**Storage**

Store at 2 to 8°C. Antibody is stable for 24 months.

**Precautions**

CD15 / FUT4 (Reed-Sternberg Cell Marker) Antibody - With BSA and Azide is for research use only and not for use in diagnostic or therapeutic procedures.

**CD15 / FUT4 (Reed-Sternberg Cell Marker) Antibody - With BSA and Azide - Protein Information**

**Name** FUT4 {ECO:0000303|PubMed:29593094}

**Function**

[Isoform Short]: Catalyzes alpha(1->3) linkage of fucosyl moiety transferred from GDP-beta-L-fucose to N-acetyl glucosamine (GlcNAc) within type 2 lactosamine (LacNAc, Gal-beta(1->4)GlcNAc) glycan attached to N- or O-linked glycoproteins (PubMed:<a href="http://www.uniprot.org/citations/29593094" target="\_blank">29593094</a>, PubMed:<a href="http://www.uniprot.org/citations/1702034" target="\_blank">1702034</a>, PubMed:<a href="http://www.uniprot.org/citations/1716630" target="\_blank">1716630</a>). Robustly fucosylates nonsialylated distal LacNAc unit of the polylactosamine chain to form Lewis X antigen (CD15), a glycan determinant known to mediate important cellular functions in development and immunity. Fucosylates with lower efficiency sialylated LacNAc acceptors to form sialyl Lewis X and 6- sulfo sialyl Lewis X determinants that serve as recognition epitopes for C-type lectins

(PubMed:<a href="http://www.uniprot.org/citations/29593094" target="\_blank">29593094</a>, PubMed:<a href="http://www.uniprot.org/citations/1716630" target="\_blank">1716630</a>). Together with FUT7 contributes to SELE, SELL and SELP selectin ligand biosynthesis and selectin-dependent lymphocyte homing, leukocyte migration and blood leukocyte homeostasis (By similarity). In a cell type specific manner, may also fucosylate the internal LacNAc unit of the polylectosamine chain to form VIM-2 antigen that serves as recognition epitope for SELE (PubMed:<a href="http://www.uniprot.org/citations/1716630" target="\_blank">1716630</a>, PubMed:<a href="http://www.uniprot.org/citations/11278338" target="\_blank">11278338</a>).

#### **Cellular Location**

Golgi apparatus, Golgi stack membrane; Single- pass type II membrane protein.

Note=Membrane-bound form in trans cisternae of Golgi

#### **Tissue Location**

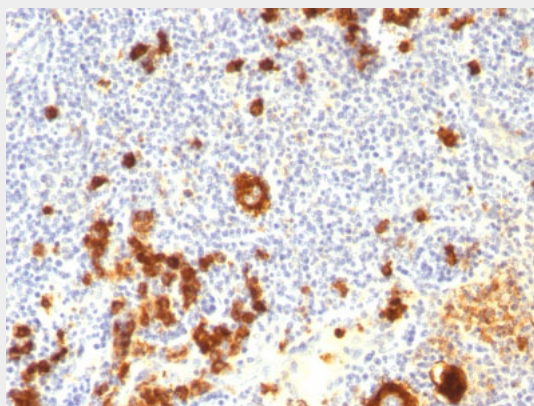
[Isoform Short]: Expressed at low levels in bone marrow-derived mesenchymal stem cells.

### **CD15 / FUT4 (Reed-Sternberg Cell Marker) Antibody - With BSA and Azide - Protocols**

Provided below are standard protocols that you may find useful for product applications.

- [Western Blot](#)
- [Blocking Peptides](#)
- [Dot Blot](#)
- [Immunohistochemistry](#)
- [Immunofluorescence](#)
- [Immunoprecipitation](#)
- [Flow Cytometry](#)
- [Cell Culture](#)

### **CD15 / FUT4 (Reed-Sternberg Cell Marker) Antibody - With BSA and Azide - Images**



Formalin-fixed, paraffin-embedded human Hodgkin's Lymphoma stained with CD15 Monoclonal Antibody (FUT4/815 + BRA-4F1).

### **CD15 / FUT4 (Reed-Sternberg Cell Marker) Antibody - With BSA and Azide - Background**

CD15 plays a role in mediating phagocytosis, bactericidal activity, and chemotaxis. It is present on >95% of granulocytes including neutrophils and eosinophils and to a lesser degree on monocytes. In addition, CD15 is expressed in Reed-Sternberg cells and some epithelial cells. CD15 antibody is very useful in the identification of Hodgkin's disease. CD15 is occasionally expressed in large cell lymphomas of both B and T phenotypes which otherwise have a quite distinct histological

appearance.

**CD15 / FUT4 (Reed-Sternberg Cell Marker) Antibody - With BSA and Azide - References**

Hsu et. al. Amer J Clin Pathol 82: 29, 1984. | Pinkus et. al. Am J Pathol 119: 244, 1985. |