

CD15 / FUT4 (Reed-Sternberg Cell Marker) Antibody - With BSA and Azide
Mouse Monoclonal Antibody [Clone FUT4/815]
Catalog # AH11280

Specification

CD15 / FUT4 (Reed-Sternberg Cell Marker) Antibody - With BSA and Azide - Product Information

Application	,2,3,4,
Primary Accession	P22083
Other Accession	2526 , 654379
Reactivity	Human, Mouse, Rat
Host	Mouse
Clonality	Monoclonal
Isotype	Mouse / IgM, kappa
Calculated MW	~220kDa (Glycoprotein) KDa

CD15 / FUT4 (Reed-Sternberg Cell Marker) Antibody - With BSA and Azide - Additional Information

Gene ID 2526

Other Names

Alpha-(1, 3)-fucosyltransferase 4, 2.4.1.-, ELAM-1 ligand fucosyltransferase, Fucosyltransferase 4, Fucosyltransferase IV, Fuc-TIV, FucT-IV, Galactoside 3-L-fucosyltransferase, FUT4, ELFT, FCT3A

Storage

Store at 2 to 8°C. Antibody is stable for 24 months.

Precautions

CD15 / FUT4 (Reed-Sternberg Cell Marker) Antibody - With BSA and Azide is for research use only and not for use in diagnostic or therapeutic procedures.

CD15 / FUT4 (Reed-Sternberg Cell Marker) Antibody - With BSA and Azide - Protein Information

Name FUT4 {ECO:0000303|PubMed:29593094}

Function

[Isoform Short]: Catalyzes alpha(1->3) linkage of fucosyl moiety transferred from GDP-beta-L-fucose to N-acetyl glucosamine (GlcNAc) within type 2 lactosamine (LacNAc, Gal-beta(1->4)GlcNAc) glycan attached to N- or O-linked glycoproteins (PubMed:29593094, PubMed:1702034, PubMed:1716630). Robustly fucosylates nonsialylated distal LacNAc unit of the polylactosamine chain to form Lewis X antigen (CD15), a glycan determinant known to mediate important cellular functions in development and immunity. Fucosylates with lower efficiency sialylated LacNAc acceptors to form sialyl Lewis X and 6- sulfo sialyl Lewis X determinants that serve as recognition epitopes for C-type lectins

(PubMed:29593094, PubMed:1716630). Together with FUT7 contributes to SELE, SELL and SELP selectin ligand biosynthesis and selectin-dependent lymphocyte homing, leukocyte migration and blood leukocyte homeostasis (By similarity). In a cell type specific manner, may also fucosylate the internal LacNAc unit of the polylactosamine chain to form VIM-2 antigen that serves as recognition epitope for SELE (PubMed:1716630, PubMed:11278338).

Cellular Location

Golgi apparatus, Golgi stack membrane; Single- pass type II membrane protein.

Note=Membrane-bound form in trans cisternae of Golgi

Tissue Location

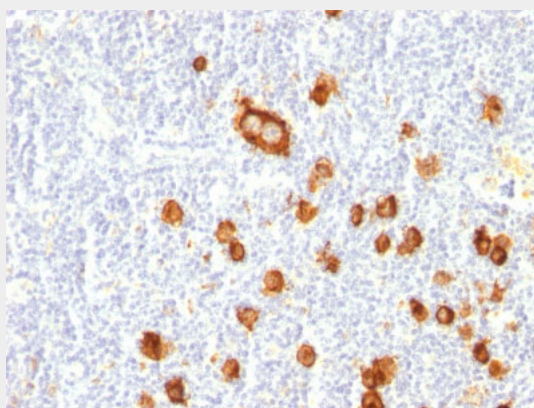
[Isoform Short]: Expressed at low levels in bone marrow-derived mesenchymal stem cells.

CD15 / FUT4 (Reed-Sternberg Cell Marker) Antibody - With BSA and Azide - Protocols

Provided below are standard protocols that you may find useful for product applications.

- [Western Blot](#)
- [Blocking Peptides](#)
- [Dot Blot](#)
- [Immunohistochemistry](#)
- [Immunofluorescence](#)
- [Immunoprecipitation](#)
- [Flow Cytometry](#)
- [Cell Culture](#)

CD15 / FUT4 (Reed-Sternberg Cell Marker) Antibody - With BSA and Azide - Images



Formalin-fixed, paraffin-embedded human Hodgkin's Lymphoma stained with CD15 Monoclonal Antibody (FUT4/815).

CD15 / FUT4 (Reed-Sternberg Cell Marker) Antibody - With BSA and Azide - Background

CD15 plays a role in mediating phagocytosis, bactericidal activity, and chemotaxis. It is present on >95% of granulocytes including neutrophils and eosinophils and to a lesser degree on monocytes. In addition, CD15 is expressed in Reed-Sternberg cells and some epithelial cells. CD15 antibody is very useful in the identification of Hodgkin's disease. CD15 is occasionally expressed in large cell lymphomas of both B and T phenotypes which otherwise have a quite distinct histological

appearance.

CD15 / FUT4 (Reed-Sternberg Cell Marker) Antibody - With BSA and Azide - References

Hakomori, S. 1992. LeX and related structures as adhesion molecules. Histochem. J. 24: 771-776. |