

Glycophorin A / CD235a (Erythrocyte Marker) Antibody - With BSA and Azide
Mouse Monoclonal Antibody [Clone GYPA/280]
Catalog # AH11379

Specification

Glycophorin A / CD235a (Erythrocyte Marker) Antibody - With BSA and Azide - Product Information

Application	,2,3,4,
Primary Accession	P02724
Other Accession	2993 , 2994 , 434973 , 654368
Reactivity	Human
Host	Mouse
Clonality	Monoclonal
Isotype	Mouse / IgG1, kappa
Calculated MW	39kDa kDa

Glycophorin A / CD235a (Erythrocyte Marker) Antibody - With BSA and Azide - Additional Information

Gene ID 2993

Other Names

Glycophorin-A, MN sialoglycoprotein, PAS-2, Sialoglycoprotein alpha, CD235a, GYPA, GPA

Storage

Store at 2 to 8°C. Antibody is stable for 24 months.

Precautions

Glycophorin A / CD235a (Erythrocyte Marker) Antibody - With BSA and Azide is for research use only and not for use in diagnostic or therapeutic procedures.

Glycophorin A / CD235a (Erythrocyte Marker) Antibody - With BSA and Azide - Protein Information

Name GYPA ([HGNC:4702](#))

Synonyms GPA

Function

Component of the ankyrin-1 complex, a multiprotein complex involved in the stability and shape of the erythrocyte membrane (PubMed: 35835865). Glycophorin A is the major intrinsic membrane protein of the erythrocyte. The N-terminal glycosylated segment, which lies outside the erythrocyte membrane, has MN blood group receptors. Appears to be important for the function of SLC4A1 and is required for high activity of SLC4A1. May be involved in translocation of SLC4A1 to the plasma membrane.

Cellular Location

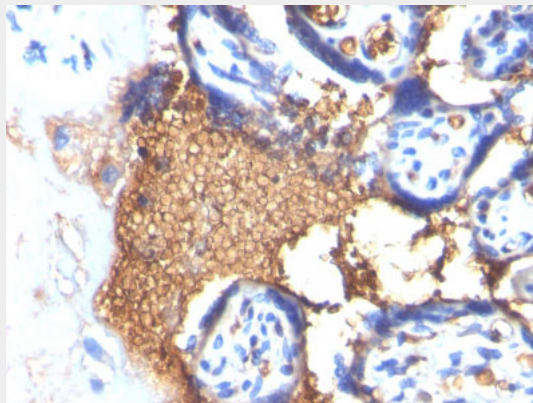
Cell membrane; Single-pass type I membrane protein Note=Appears to be colocalized with SLC4A1

Glycophorin A / CD235a (Erythrocyte Marker) Antibody - With BSA and Azide - Protocols

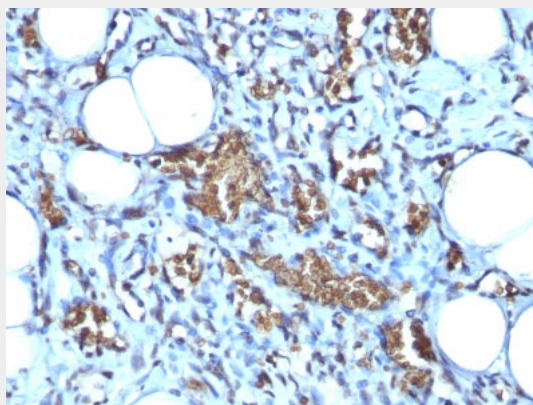
Provided below are standard protocols that you may find useful for product applications.

- [Western Blot](#)
- [Blocking Peptides](#)
- [Dot Blot](#)
- [Immunohistochemistry](#)
- [Immunofluorescence](#)
- [Immunoprecipitation](#)
- [Flow Cytometry](#)
- [Cell Culture](#)

Glycophorin A / CD235a (Erythrocyte Marker) Antibody - With BSA and Azide - Images



Formalin-fixed, paraffin-embedded human Placenta stained with Glycophorin A Monoclonal Antibody (GYPA/280)



Formalin-fixed, paraffin-embedded human Angiosarcoma stained with Glycophorin A Monoclonal Antibody (GYPA/280)

Glycophorin A / CD235a (Erythrocyte Marker) Antibody - With BSA and Azide - Background

Recognizes a sialoglycoprotein of 39kDa, identified as glycophorin A (GPA). It is present on red blood cells (RBC) and erythroid precursor cells. It has been shown that glycophorin acts as the receptor for Sandei virus and parvovirus. Glycophorins A (GPA) and B (GPB), which are single, trans-membrane sialoglycoproteins. GPA is the carrier of blood group M and N specificities, while

GPB accounts for S and U specificities. GPA and GPB provide the cells with a large mucin like surface and it has been suggested this provides a barrier to cell fusion, so minimizing aggregation between red blood cells in the circulation.

Glycophorin A / CD235a (Erythrocyte Marker) Antibody - With BSA and Azide - References

Andersson, L.C., et al. 1979. Glycophorin A as a cell surface marker of early erythroid differentiation in acute leukemia. *Int. J. Cancer* 23: 717-720. | Liszka, K., et al., 1983. Glycophorin A expression in malignant hematopoiesis. *Am. J. Hematol.* 15: 219-226