

Cytokeratin 18 (KRT18) Antibody - With BSA and Azide
Mouse Monoclonal Antibody [Clone B23.1]
Catalog # AH11723

Specification

Cytokeratin 18 (KRT18) Antibody - With BSA and Azide - Product Information

Application	,1,2,3,4,
Primary Accession	P05783
Other Accession	3875, 406013
Reactivity	Human
Host	Mouse
Clonality	Monoclonal
Isotype	Mouse / IgG1
Calculated MW	45kDa kDa

Cytokeratin 18 (KRT18) Antibody - With BSA and Azide - Additional Information

Gene ID 3875

Other Names

Keratin, type I cytoskeletal 18, Cell proliferation-inducing gene 46 protein, Cytokeratin-18, CK-18, Keratin-18, K18, KRT18, CYK18

Storage

Store at 2 to 8°C. Antibody is stable for 24 months.

Precautions

Cytokeratin 18 (KRT18) Antibody - With BSA and Azide is for research use only and not for use in diagnostic or therapeutic procedures.

Cytokeratin 18 (KRT18) Antibody - With BSA and Azide - Protein Information

Name KRT18

Synonyms CYK18

Function

Involved in the uptake of thrombin-antithrombin complexes by hepatic cells (By similarity). When phosphorylated, plays a role in filament reorganization. Involved in the delivery of mutated CFTR to the plasma membrane. Together with KRT8, is involved in interleukin-6 (IL-6)-mediated barrier protection.

Cellular Location

Nucleus matrix {ECO:0000250|UniProtKB:Q5BJY9}. Cytoplasm, perinuclear region. Nucleus, nucleolus. Cytoplasm {ECO:0000250|UniProtKB:Q5BJY9}

Tissue Location

Expressed in colon, placenta, liver and very weakly in exocervix. Increased expression observed in

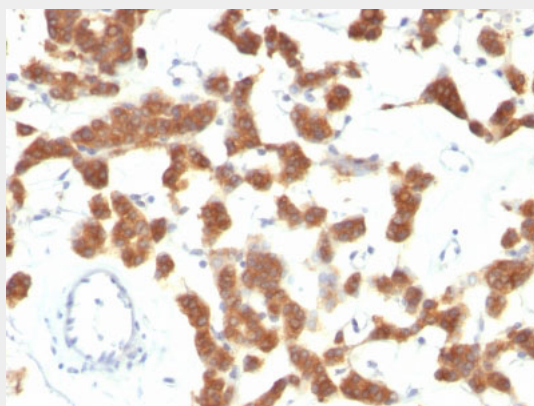
lymph nodes of breast carcinoma.

Cytokeratin 18 (KRT18) Antibody - With BSA and Azide - Protocols

Provided below are standard protocols that you may find useful for product applications.

- [Western Blot](#)
- [Blocking Peptides](#)
- [Dot Blot](#)
- [Immunohistochemistry](#)
- [Immunofluorescence](#)
- [Immunoprecipitation](#)
- [Flow Cytometry](#)
- [Cell Culture](#)

Cytokeratin 18 (KRT18) Antibody - With BSA and Azide - Images



Formalin-fixed, paraffin-embedded human Thyroid Carcinoma stained with Cytokeratin 18 Monoclonal Antibody (B23.1).

Cytokeratin 18 (KRT18) Antibody - With BSA and Azide - Background

This MAb reacts with a wide variety of simple epithelia. It does not react with stratified squamous epithelia. It reacts with epithelial tumors of the gastrointestinal tract, lung, breast, pancreas, ovary, and thyroid. Cytokeratin 18, which belongs to the type A (acidic) subfamily of low molecular weight keratins, exists in combination with cytokeratin 8. It is reported that tissues from gastrointestinal tract are positive for both cytokeratin 8 and 18 but do not contain cytokeratin 14. Tissues from gastrointestinal tract, respiratory tract and urogenital tract, as well as endocrine and exocrine tissues and mesothelial cells are positive for cytokeratin 18.

Cytokeratin 18 (KRT18) Antibody - With BSA and Azide - References

Kovarik J et al. Int J Cancer, Supplement. 3:50-55 (1988). | Lane EB, Alexander CM. Sem Cancer Biol 1:165-179 (1990)