

LH-beta (Luteinizing Hormone-beta) Antibody - With BSA and Azide
Mouse Monoclonal Antibody [Clone LHb/1214]
Catalog # AH11748

Specification

LH-beta (Luteinizing Hormone-beta) Antibody - With BSA and Azide - Product Information

Application	,2,3,4,
Primary Accession	P01229
Other Accession	3972 , 154704
Reactivity	Human
Host	Mouse
Clonality	Monoclonal
Isotype	Mouse / IgG1, kappa
Calculated MW	22kDa kDa

LH-beta (Luteinizing Hormone-beta) Antibody - With BSA and Azide - Additional Information

Gene ID 3972

Other Names

Lutropin subunit beta, Lutropin beta chain, Luteinizing hormone subunit beta, LH-B, LSH-B, LSH-beta, LHB

Storage

Store at 2 to 8°C. Antibody is stable for 24 months.

Precautions

LH-beta (Luteinizing Hormone-beta) Antibody - With BSA and Azide is for research use only and not for use in diagnostic or therapeutic procedures.

LH-beta (Luteinizing Hormone-beta) Antibody - With BSA and Azide - Protein Information

Name LHB

Function

Promotes spermatogenesis and ovulation by stimulating the testes and ovaries to synthesize steroids.

Cellular Location

Secreted.

Tissue Location

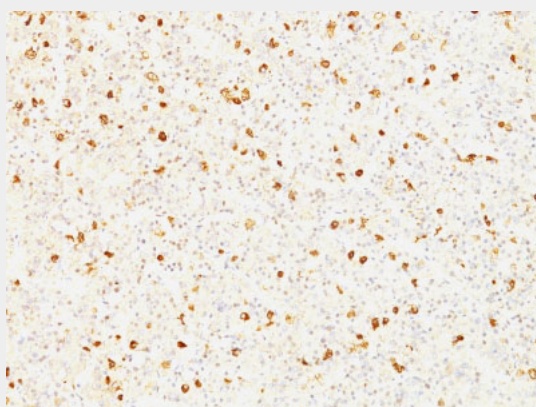
Pituitary gland.

LH-beta (Luteinizing Hormone-beta) Antibody - With BSA and Azide - Protocols

Provided below are standard protocols that you may find useful for product applications.

- [Western Blot](#)
- [Blocking Peptides](#)
- [Dot Blot](#)
- [Immunohistochemistry](#)
- [Immunofluorescence](#)
- [Immunoprecipitation](#)
- [Flow Cytometry](#)
- [Cell Culture](#)

LH-beta (Luteinizing Hormone-beta) Antibody - With BSA and Azide - Images



Formalin-fixed, paraffin-embedded human Pituitary stained with LH-beta Monoclonal Antibody (LHb/1214).

LH-beta (Luteinizing Hormone-beta) Antibody - With BSA and Azide - Background

Luteinizing hormone (LH) is a glycoprotein. Each monomeric unit is a sugar-like protein molecule; two of these make the full, functional protein. Its structure is similar to the other glycoproteins, follicle-stimulating hormone (FSH), thyroid-stimulating hormone (TSH), and human chorionic gonadotropin (hCG). The protein dimer contains 2 polypeptide units, labeled alpha and beta subunits that are connected by two bridges. The alpha subunits of LH, FSH, TSH, and hCG are identical, and contain 92 amino acids. The beta subunits vary. LH has a beta subunit of 121 amino acids (LHB) that confers its specific biologic action and is responsible for interaction with the LH receptor. This beta subunit contains the same amino acids in sequence as the beta subunit of hCG and both stimulate the same receptor; however, the hCG beta subunit contains an additional 24 amino acids and the hormones differ in the composition of their sugar moieties. LH is synthesized and secreted by gonadotrophs in the anterior lobe of the pituitary gland. In concert with the other pituitary gonadotropin follicle-stimulating hormone (FSH), it is necessary for proper reproductive function. In the female, an acute rise of LH levels triggers ovulation. In the male, where LH has also been called Interstitial Cell-Stimulating Hormone (ICSH), it stimulates Leydig cell production of testosterone. LH is a useful marker in classification of pituitary tumors and the study of pituitary disease.

LH-beta (Luteinizing Hormone-beta) Antibody - With BSA and Azide - References

Couzinet, B., et al. 1993. The control of gonadotrophin secretion by ovarian steroids. Hum. Reprod. 2: 97-101