

CD31 / PECAM-1 (Endothelial Cell Marker) Antibody - Culture Supernatant
Mouse Monoclonal Antibody [Clone 1A10]
Catalog # AH12067

Specification

CD31 / PECAM-1 (Endothelial Cell Marker) Antibody - Culture Supernatant - Product Information

Application	,2,3,4,
Primary Accession	P16284
Other Accession	5175 , 376675 , 514412
Reactivity	Human
Host	Mouse
Clonality	Monoclonal
Isotype	Mouse / IgG1, kappa
Calculated MW	~100kDa (endothelium) and ~130kDa (platelets) KDa

CD31 / PECAM-1 (Endothelial Cell Marker) Antibody - Culture Supernatant - Additional Information

Gene ID 5175

Other Names

Platelet endothelial cell adhesion molecule, PECAM-1, EndoCAM, GPIIA', PECA1, CD31, PECAM1

Storage

Store at 2 to 8°C. Antibody is stable for 24 months.

Precautions

CD31 / PECAM-1 (Endothelial Cell Marker) Antibody - Culture Supernatant is for research use only and not for use in diagnostic or therapeutic procedures.

CD31 / PECAM-1 (Endothelial Cell Marker) Antibody - Culture Supernatant - Protein Information

Name PECAM1

Function

Cell adhesion molecule which is required for leukocyte transendothelial migration (TEM) under most inflammatory conditions (PubMed:<[a href="http://www.uniprot.org/citations/19342684" target="_blank">19342684](http://www.uniprot.org/citations/19342684), PubMed:<[a href="http://www.uniprot.org/citations/17580308" target="_blank">17580308](http://www.uniprot.org/citations/17580308)). Tyr-690 plays a critical role in TEM and is required for efficient trafficking of PECAM1 to and from the lateral border recycling compartment (LBRC) and is also essential for the LBRC membrane to be targeted around migrating leukocytes (PubMed:<[a href="http://www.uniprot.org/citations/19342684" target="_blank">19342684](http://www.uniprot.org/citations/19342684)). Trans-homophilic interaction may play a role in endothelial cell-cell adhesion via cell junctions (PubMed:<[a href="http://www.uniprot.org/citations/27958302" target="_blank">27958302](http://www.uniprot.org/citations/27958302)). Heterophilic interaction with CD177 plays a role in transendothelial migration of neutrophils

(PubMed:17580308). Homophilic ligation of PECAM1 prevents macrophage-mediated phagocytosis of neighboring viable leukocytes by transmitting a detachment signal (PubMed:12110892). Promotes macrophage-mediated phagocytosis of apoptotic leukocytes by tethering them to the phagocytic cells; PECAM1-mediated detachment signal appears to be disabled in apoptotic leukocytes (PubMed:12110892). Modulates bradykinin receptor BDKRB2 activation (PubMed:18672896). Regulates bradykinin- and hyperosmotic shock-induced ERK1/2 activation in endothelial cells (PubMed:18672896). Induces susceptibility to atherosclerosis (By similarity).

Cellular Location

Cell membrane; Single-pass type I membrane protein. Note=Cell surface expression on neutrophils is down-regulated upon fMLP or CXCL8/IL8- mediated stimulation. [Isoform Delta15]: Cell junction. Note=Localizes to the lateral border recycling compartment (LBRC) and recycles from the LBRC to the junction in resting endothelial cells

Tissue Location

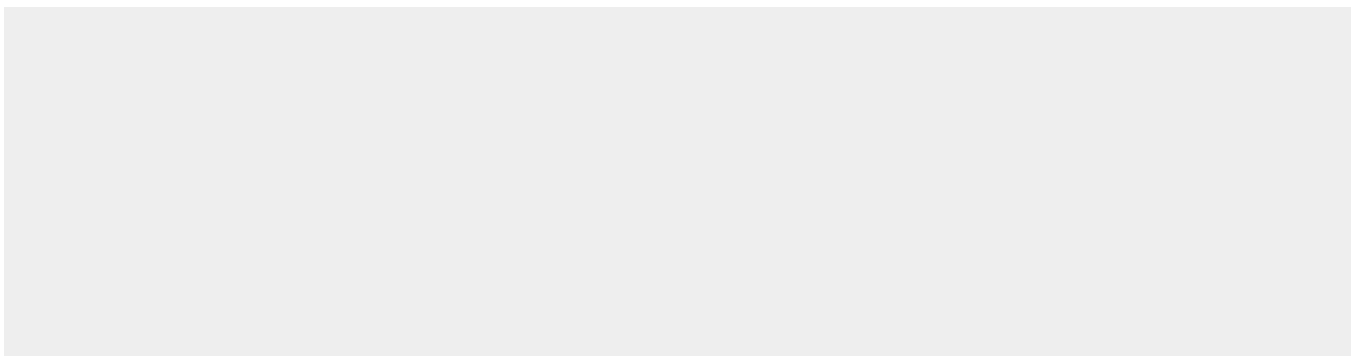
Expressed on platelets and leukocytes and is primarily concentrated at the borders between endothelial cells (PubMed:18388311, PubMed:21464369). Expressed in human umbilical vein endothelial cells (HUVECs) (at protein level) (PubMed:19342684, PubMed:17580308). Expressed on neutrophils (at protein level) (PubMed:17580308). Isoform Long predominates in all tissues examined (PubMed:12433657). Isoform Delta12 is detected only in trachea (PubMed:12433657). Isoform Delta14-15 is only detected in lung (PubMed:12433657). Isoform Delta14 is detected in all tissues examined with the strongest expression in heart (PubMed:12433657). Isoform Delta15 is expressed in brain, testis, ovary, cell surface of platelets, human umbilical vein endothelial cells (HUVECs), Jurkat T- cell leukemia, human erythroleukemia (HEL) and U-937 histiocytic lymphoma cell lines (at protein level) (PubMed:12433657, PubMed:18388311).

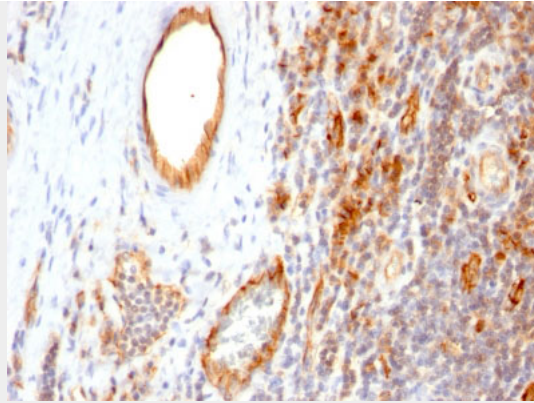
CD31 / PECAM-1 (Endothelial Cell Marker) Antibody - Culture Supernatant - Protocols

Provided below are standard protocols that you may find useful for product applications.

- [Western Blot](#)
- [Blocking Peptides](#)
- [Dot Blot](#)
- [Immunohistochemistry](#)
- [Immunofluorescence](#)
- [Immunoprecipitation](#)
- [Flow Cytometry](#)
- [Cell Culture](#)

CD31 / PECAM-1 (Endothelial Cell Marker) Antibody - Culture Supernatant - Images





Formalin-fixed, paraffin-embedded human Tonsil stained with CD31 Monoclonal Antibody (1A10)

CD31 / PECAM-1 (Endothelial Cell Marker) Antibody - Culture Supernatant - Background

CD31 (PECAM-1) is a transmembrane glycoprotein member of the immunoglobulin supergene family of adhesion molecules. CD31 is expressed by stem cells of the hematopoietic system and is primarily used to identify and concentrate these cells for experimental studies as well as for bone marrow transplantation. Anti-CD31 has shown to be highly specific and sensitive for vascular endothelial cells. Staining of nonvascular tumors (excluding hematopoietic neoplasms) is rare. CD31 MAb reacts with normal, benign, and malignant endothelial cells which make up blood vessel lining. The level of CD31 expression can help to determine the degree of tumor angiogenesis, and a high level of CD31 expression may imply a rapidly growing tumor and potentially a predictor of tumor recurrence.

CD31 / PECAM-1 (Endothelial Cell Marker) Antibody - Culture Supernatant - References

Stockinger H, Gadd S J, Eher R, et al. Molecular characterization and functional analysis of the leukocyte surface protein CD31. *Journal of Immunology*. 145 (11): 3889-3897 (1990). | Stockinger H, Schreiber W, Majdic O, et al. Phenotype of human T cells expressing CD31, a molecule of the immunoglobulin supergene family. *Immunology*. 75 (1): 53-58 (1992) |