

CD45 / LCA (Leucocyte Marker) Antibody - With BSA and Azide
Mouse Monoclonal Antibody [Clone 136-4B5]
Catalog # AH12165**Specification**

CD45 / LCA (Leucocyte Marker) Antibody - With BSA and Azide - Product Information

Application	,2,3,4,
Primary Accession	P08575
Other Accession	5788 , 654514
Reactivity	Human
Host	Mouse
Clonality	Monoclonal
Isotype	Mouse / IgG1, kappa
Calculated MW	180-220kDa KDa

CD45 / LCA (Leucocyte Marker) Antibody - With BSA and Azide - Additional Information**Gene ID** 5788**Other Names**

Receptor-type tyrosine-protein phosphatase C, 3.1.3.48, Leukocyte common antigen, L-CA, T200, CD45, PTPRC, CD45

Storage

Store at 2 to 8°C. Antibody is stable for 24 months.

Precautions

CD45 / LCA (Leucocyte Marker) Antibody - With BSA and Azide is for research use only and not for use in diagnostic or therapeutic procedures.

CD45 / LCA (Leucocyte Marker) Antibody - With BSA and Azide - Protein Information**Name** PTPRC ([HGNC:9666](#))**Synonyms** CD45**Function**

Protein tyrosine-protein phosphatase required for T-cell activation through the antigen receptor. Acts as a positive regulator of T-cell coactivation upon binding to DPP4. The first PTPase domain has enzymatic activity, while the second one seems to affect the substrate specificity of the first one. Upon T-cell activation, recruits and dephosphorylates SKAP1 and FYN. Dephosphorylates LYN, and thereby modulates LYN activity (By similarity).

Cellular Location

Cell membrane; Single-pass type I membrane protein. Membrane raft Note=Colocalized with DPP4 in membrane rafts

Tissue Location

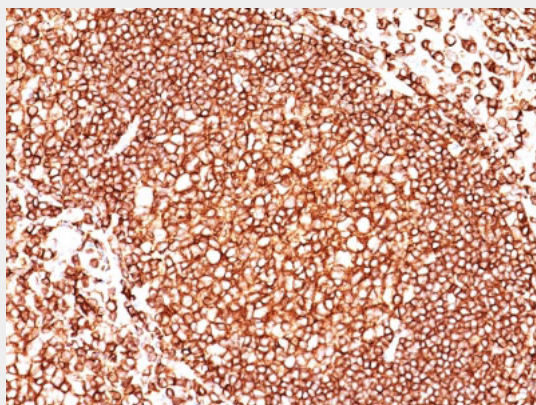
Isoform 1: Detected in thymocytes. Isoform 2: Detected in thymocytes. Isoform 3: Detected in thymocytes. Isoform 4: Not detected in thymocytes. Isoform 5: Detected in thymocytes. Isoform 6: Not detected in thymocytes. Isoform 7: Detected in thymocytes Isoform 8: Not detected in thymocytes.

CD45 / LCA (Leucocyte Marker) Antibody - With BSA and Azide - Protocols

Provided below are standard protocols that you may find useful for product applications.

- [Western Blot](#)
- [Blocking Peptides](#)
- [Dot Blot](#)
- [Immunohistochemistry](#)
- [Immunofluorescence](#)
- [Immunoprecipitation](#)
- [Flow Cytometry](#)
- [Cell Culture](#)

CD45 / LCA (Leucocyte Marker) Antibody - With BSA and Azide - Images



Formalin-fixed, paraffin-embedded human Tonsil stained with CD45 Monoclonal Antibody (136-4B5).

CD45 / LCA (Leucocyte Marker) Antibody - With BSA and Azide - Background

CD45R, also designated CD45 and PTPRC, has been identified as a transmembrane glycoprotein, broadly expressed among hematopoietic cells. Multiple isoforms of CD45R are distributed throughout the immune system according to cell type. These isoforms arise because of alternative splicing of exons 4, 5, and 6. The corresponding protein domains are characterized by the binding of monoclonal antibodies specific for CD45RA (exon 4), CD45RB (exon 5), CD45RC (exon 6) and CD45RO (exons 4 to 6 spliced out). The variation in these isoforms is localized to the extracellular domain of CD45R, while the intracellular domain is conserved. CD45R functions as a phosphor-tyrosine phosphatase. This MAb reacts with all isoforms of CD45R expressed by all hematopoietic cells, except erythrocytes, having a higher level of expression on lymphocytes than on granulocytes (Workshop IV). Epitope of this MAb resides in the sialic acid moiety of T200 molecule. It enhances the proliferative response of B cells in an anti-immunoglobulin-induced B cell proliferation. Antibody to CD45 is useful in differential diagnosis of lymphoid tumors from non-hematopoietic undifferentiated neoplasms.

CD45 / LCA (Leucocyte Marker) Antibody - With BSA and Azide - References

Alsinet E, et. al. European Journal of Immunology, 1990, 20(12):2801-4. | Knapp, W. et. al. Leucocyte Typing IV, p531-536, Oxford Univ. Press, 1989