

**CD45RA (Leucocyte Marker) Antibody - With BSA and Azide**  
**Mouse Monoclonal Antibody [Clone PTPRC/1131 ]**  
**Catalog # AH12179****Specification**

---

**CD45RA (Leucocyte Marker) Antibody - With BSA and Azide - Product Information**

Application	,2,3,4,
Primary Accession	<a href="#">P08575</a>
Other Accession	<a href="#">5788</a> , <a href="#">654514</a>
Reactivity	Human
Host	Mouse
Clonality	Monoclonal
Isotype	Mouse / IgG1, kappa
Calculated MW	205-220kDa KDa

**CD45RA (Leucocyte Marker) Antibody - With BSA and Azide - Additional Information****Gene ID** 5788**Other Names**

Receptor-type tyrosine-protein phosphatase C, 3.1.3.48, Leukocyte common antigen, L-CA, T200, CD45, PTPRC, CD45

**Storage**

Store at 2 to 8°C. Antibody is stable for 24 months.

**Precautions**

CD45RA (Leucocyte Marker) Antibody - With BSA and Azide is for research use only and not for use in diagnostic or therapeutic procedures.

**CD45RA (Leucocyte Marker) Antibody - With BSA and Azide - Protein Information****Name** PTPRC ([HGNC:9666](#))**Synonyms** CD45**Function**

Protein tyrosine-protein phosphatase required for T-cell activation through the antigen receptor. Acts as a positive regulator of T-cell coactivation upon binding to DPP4. The first PTPase domain has enzymatic activity, while the second one seems to affect the substrate specificity of the first one. Upon T-cell activation, recruits and dephosphorylates SKAP1 and FYN. Dephosphorylates LYN, and thereby modulates LYN activity (By similarity).

**Cellular Location**

Cell membrane; Single-pass type I membrane protein. Membrane raft Note=Colocalized with DPP4 in membrane rafts

**Tissue Location**



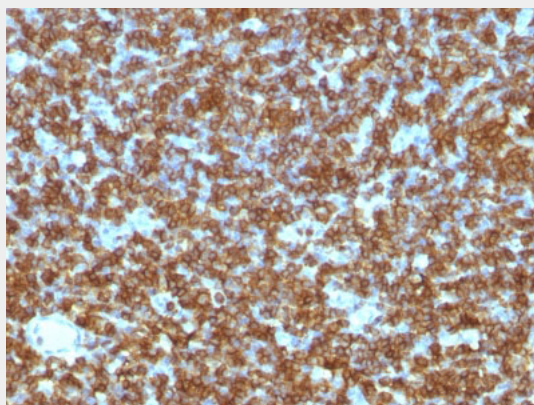
Isoform 1: Detected in thymocytes. Isoform 2: Detected in thymocytes. Isoform 3: Detected in thymocytes. Isoform 4: Not detected in thymocytes. Isoform 5: Detected in thymocytes. Isoform 6: Not detected in thymocytes. Isoform 7: Detected in thymocytes Isoform 8: Not detected in thymocytes.

### **CD45RA (Leucocyte Marker) Antibody - With BSA and Azide - Protocols**

Provided below are standard protocols that you may find useful for product applications.

- [Western Blot](#)
- [Blocking Peptides](#)
- [Dot Blot](#)
- [Immunohistochemistry](#)
- [Immunofluorescence](#)
- [Immunoprecipitation](#)
- [Flow Cytometry](#)
- [Cell Culture](#)

### **CD45RA (Leucocyte Marker) Antibody - With BSA and Azide - Images**



Formalin-fixed, paraffin-embedded human Tonsil stained with CD45RA Monoclonal Antibody (PTPRC/1131).

### **CD45RA (Leucocyte Marker) Antibody - With BSA and Azide - Background**

Recognizes a protein of 205kDa-220kDa, identified as CD45RA. CD45RA is isoforms of the human leukocyte common antigen (CD45). Human CD45 contains three exons which encode peptide segments designated A, B and C, respectively. The differential splicing of the exons generates at least five isoforms, ABC, AB, BC, B and O. This antibody reacts with ABC and BC isoforms. CD45RA is expressed on 40-50% of peripheral CD4+ T-cells, 50% of peripheral CD8+ T-cells, B-cells, and leukemic B-cell lines. T-cells expressing CD45RA are naive or virgin T-cells. T-cells expressing CD45RO are memory T-cells. CD45RA and CD45RO define complementary, predominantly non-overlapping populations of resting peripheral T-cells. This MAb is useful in study on the subpopulation of CD4+ or CD8+ T-cells. It can especially be used to differentiate T-cell lymphomas (CD45RO +ve) from B cell lymphomas (CD45RA +ve).

### **CD45RA (Leucocyte Marker) Antibody - With BSA and Azide - References**

West, K.P., et al. 1986. The demonstration of B-cell, T-cell and myeloid antigens in paraffin sections. J. Pathol. 150: 89-101