

**Sex Hormone Binding Globulin (SHBG) Antibody - With BSA and Azide**  
**Mouse Monoclonal Antibody [Clone SHBG/245 ]**  
**Catalog # AH12299**

**Specification**

---

**Sex Hormone Binding Globulin (SHBG) Antibody - With BSA and Azide - Product Information**

Application	,2,3,4,
Primary Accession	<a href="#">P04278</a>
Other Accession	<a href="#">6462</a> , <a href="#">632235</a>
Reactivity	Human
Host	Mouse
Clonality	Monoclonal
Isotype	Mouse / IgG1
Calculated MW	45kDa kDa

**Sex Hormone Binding Globulin (SHBG) Antibody - With BSA and Azide - Additional Information**

**Gene ID** 6462

**Other Names**

Sex hormone-binding globulin, SHBG, Sex steroid-binding protein, SBP, Testis-specific androgen-binding protein, ABP, Testosterone-estradiol-binding globulin, TeBG, Testosterone-estrogen-binding globulin, SHBG

**Storage**

Store at 2 to 8°C. Antibody is stable for 24 months.

**Precautions**

Sex Hormone Binding Globulin (SHBG) Antibody - With BSA and Azide is for research use only and not for use in diagnostic or therapeutic procedures.

**Sex Hormone Binding Globulin (SHBG) Antibody - With BSA and Azide - Protein Information**

**Name** SHBG ([HGNC:10839](#))

**Function**

Functions as an androgen transport protein, but may also be involved in receptor mediated processes. Each dimer binds one molecule of steroid. Specific for 5-alpha-dihydrotestosterone, testosterone, and 17-beta-estradiol. Regulates the plasma metabolic clearance rate of steroid hormones by controlling their plasma concentration.

**Cellular Location**

Secreted. Note=In testis, it is synthesized by the Sertoli cells, secreted into the lumen of the seminiferous tubule and transported to the epididymis.

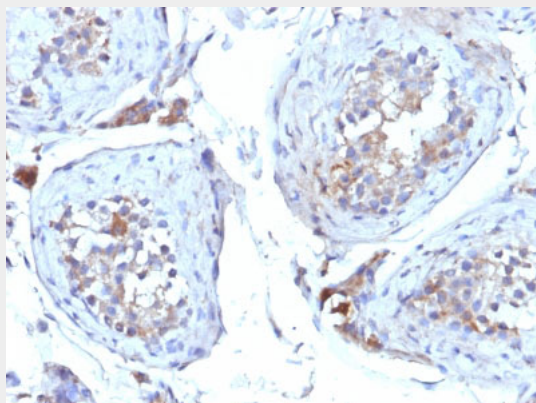
**Tissue Location**

Isoform 1 and isoform 2 are present in liver and testis

**Sex Hormone Binding Globulin (SHBG) Antibody - With BSA and Azide - Protocols**

Provided below are standard protocols that you may find useful for product applications.

- [Western Blot](#)
- [Blocking Peptides](#)
- [Dot Blot](#)
- [Immunohistochemistry](#)
- [Immunofluorescence](#)
- [Immunoprecipitation](#)
- [Flow Cytometry](#)
- [Cell Culture](#)

**Sex Hormone Binding Globulin (SHBG) Antibody - With BSA and Azide - Images**

Formalin-fixed, paraffin-embedded human Testicular Carcinoma stained with SHBG Monoclonal Antibody (SHBG/245)

**Sex Hormone Binding Globulin (SHBG) Antibody - With BSA and Azide - Background**

Recognizes a protein of 45kDa, identified as SHBG. It functions as an androgen transport protein, but may also be involved in receptor-mediated processes. Each dimer binds one molecule of steroid. It is specific for 5-alpha-dihydrotestosterone, testosterone, and 17-beta-estradiol. SHBG regulates the plasma metabolic clearance rate of steroid hormones by controlling their plasma concentration. In testis, it is synthesized by the Sertoli cells, secreted into the lumen of the seminiferous tubule and transported to the epididymis.

**Sex Hormone Binding Globulin (SHBG) Antibody - With BSA and Azide - References**

Grishkovskaya, I., et al. 2000. Crystal structure of human sex hormone-binding globulin: steroid transport by a laminin G-like domain. EMBO. J. 19: 504-512. |