

Caldesmon, HMW (h-Caldesmon) (Smooth Muscle Marker) Antibody - With BSA and Azide

Mouse Monoclonal Antibody [Clone CALD1/820 + h-CALD]
Catalog # AH12566

Specification

Caldesmon, HMW (h-Caldesmon) (Smooth Muscle Marker) Antibody - With BSA and Azide - Product Information

Application	,2,3,4,
Primary Accession	Q05682
Other Accession	800, 490203
Reactivity	Human
Host	Mouse
Clonality	Monoclonal
Isotype	Mouse / IgG's
Calculated MW	150kDa KDa

Caldesmon, HMW (h-Caldesmon) (Smooth Muscle Marker) Antibody - With BSA and Azide - Additional Information

Gene ID 800

Other Names

Caldesmon, CDM, CALD1, CAD, CDM

Storage

Store at 2 to 8°C. Antibody is stable for 24 months.

Precautions

Caldesmon, HMW (h-Caldesmon) (Smooth Muscle Marker) Antibody - With BSA and Azide is for research use only and not for use in diagnostic or therapeutic procedures.

Caldesmon, HMW (h-Caldesmon) (Smooth Muscle Marker) Antibody - With BSA and Azide - Protein Information

Name CALD1

Synonyms CAD, CDM

Function

Actin- and myosin-binding protein implicated in the regulation of actomyosin interactions in smooth muscle and nonmuscle cells (could act as a bridge between myosin and actin filaments). Stimulates actin binding of tropomyosin which increases the stabilization of actin filament structure. In muscle tissues, inhibits the actomyosin ATPase by binding to F-actin. This inhibition is attenuated by calcium-calmodulin and is potentiated by tropomyosin. Interacts with actin, myosin, two molecules of tropomyosin and with calmodulin. Also plays an essential role during cellular mitosis and receptor capping. Involved in Schwann cell migration during peripheral nerve regeneration (By similarity).

Cellular Location

Cytoplasm, cytoskeleton {ECO:0000250|UniProtKB:P13505}. Cytoplasm, myofibril {ECO:0000250|UniProtKB:P13505}. Cytoplasm, cytoskeleton, stress fiber {ECO:0000250|UniProtKB:P13505}. Note=On thin filaments in smooth muscle and on stress fibers in fibroblasts (nonmuscle) {ECO:0000250|UniProtKB:P13505}

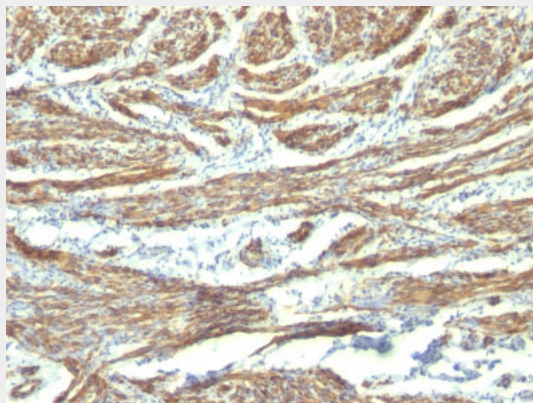
Tissue Location

High-molecular-weight caldesmon (isoform 1) is predominantly expressed in smooth muscles, whereas low-molecular-weight caldesmon (isoforms 2, 3, 4 and 5) are widely distributed in non-muscle tissues and cells. Not expressed in skeletal muscle or heart

Caldesmon, HMW (h-Caldesmon) (Smooth Muscle Marker) Antibody - With BSA and Azide - Protocols

Provided below are standard protocols that you may find useful for product applications.

- [Western Blot](#)
- [Blocking Peptides](#)
- [Dot Blot](#)
- [Immunohistochemistry](#)
- [Immunofluorescence](#)
- [Immunoprecipitation](#)
- [Flow Cytometry](#)
- [Cell Culture](#)

Caldesmon, HMW (h-Caldesmon) (Smooth Muscle Marker) Antibody - With BSA and Azide - Images

Formalin-fixed, paraffin-embedded human Uterus stained with Caldesmon Monoclonal Antibody (CALD1/820 + h-CALD).

Caldesmon, HMW (h-Caldesmon) (Smooth Muscle Marker) Antibody - With BSA and Azide - Background

Recognizes a protein of 150kDa, which is identified as the high molecular weight variant of Caldesmon. Two closely related variants of human caldesmon have been identified which are different in their electrophoretic mobility and cellular distribution. The h-caldesmon variant (120-150kDa) is predominantly expressed in smooth muscle whereas l-caldesmon (70-80kDa) is found in non-muscle tissue and cells. Neither of the two variants has been detected in skeletal muscle. This MAbs recognizes only the 150kDa variant (h-caldesmon) in Western blots of human aortic media extracts and is unreactive with fibroblast extracts from cultivated human foreskin.

Caldesmon is a developmentally regulated protein involved in smooth muscle and non-muscle contraction.

Caldesmon, HMW (h-Caldesmon) (Smooth Muscle Marker) Antibody - With BSA and Azide
- References

Watanabe, K., Tajino, T., Sekiguchi, M. and Suzuki, T. 2000. H-Caldesmon as a specific marker for smooth muscle tumors. Comparison with other smooth muscle markers in bone tumors. Am. J. Clin. Pathol. 113: 663-668. | Frid MG, et al. Phenotypic changes of human smooth muscle cells during development: Late expression of heavy caldesmon and calponin. Dev Biol 1992; 153:185 |