
CD34 (Hematopoietic Stem Cell & Endothelial Marker) Antibody - With BSA and Azide
Mouse Monoclonal Antibody [Clone HPCA1/763]
Catalog # AH12702

Specification

**CD34 (Hematopoietic Stem Cell & Endothelial Marker) Antibody - With BSA and Azide -
Product Information**

Application	,2,3,4,
Primary Accession	P28906
Other Accession	947 , 374990
Reactivity	Human
Host	Mouse
Clonality	Monoclonal
Isotype	Mouse / IgG1, kappa
Calculated MW	90-110kDa KDa

**CD34 (Hematopoietic Stem Cell & Endothelial Marker) Antibody - With BSA and Azide -
Additional Information**

Gene ID 947

Other Names

Hematopoietic progenitor cell antigen CD34, CD34, CD34

Storage

Store at 2 to 8°C. Antibody is stable for 24 months.

Precautions

CD34 (Hematopoietic Stem Cell & Endothelial Marker) Antibody - With BSA and Azide is for research use only and not for use in diagnostic or therapeutic procedures.

**CD34 (Hematopoietic Stem Cell & Endothelial Marker) Antibody - With BSA and Azide -
Protein Information**

Name CD34

Function

Possible adhesion molecule with a role in early hematopoiesis by mediating the attachment of stem cells to the bone marrow extracellular matrix or directly to stromal cells. Could act as a scaffold for the attachment of lineage specific glycans, allowing stem cells to bind to lectins expressed by stromal cells or other marrow components. Presents carbohydrate ligands to selectins.

Cellular Location

Membrane; Single-pass type I membrane protein.

Tissue Location

Selectively expressed on hematopoietic progenitor cells and the small vessel endothelium of a

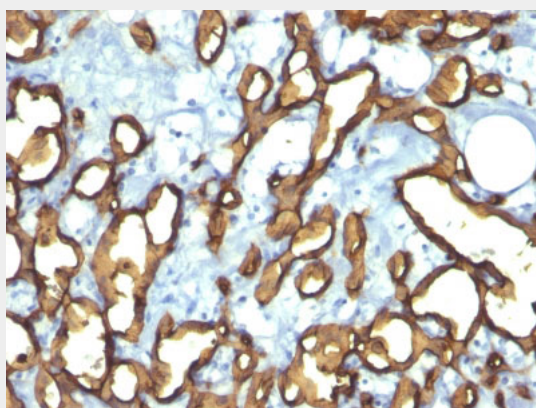
variety of tissues

CD34 (Hematopoietic Stem Cell & Endothelial Marker) Antibody - With BSA and Azide - Protocols

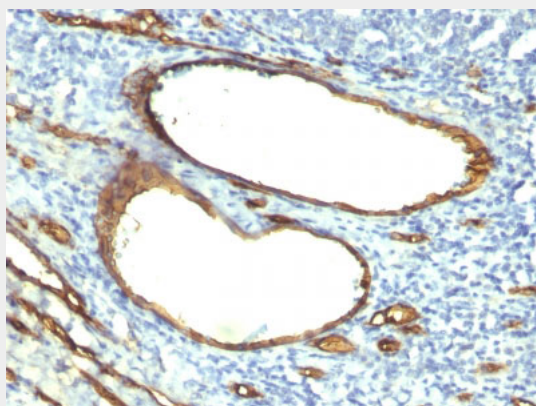
Provided below are standard protocols that you may find useful for product applications.

- [Western Blot](#)
- [Blocking Peptides](#)
- [Dot Blot](#)
- [Immunohistochemistry](#)
- [Immunofluorescence](#)
- [Immunoprecipitation](#)
- [Flow Cytometry](#)
- [Cell Culture](#)

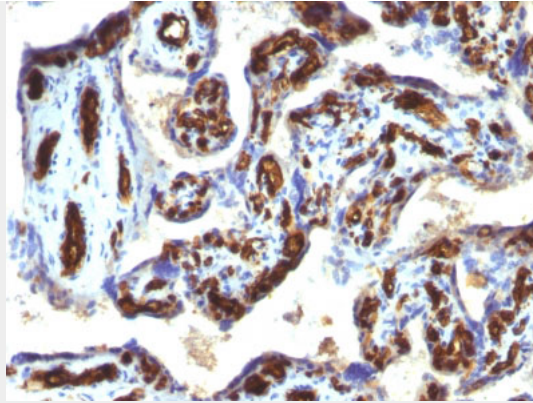
CD34 (Hematopoietic Stem Cell & Endothelial Marker) Antibody - With BSA and Azide - Images



Formalin-fixed, paraffin-embedded human Angiosarcoma stained with CD34 Monoclonal Antibody (HPCA1/763)



Formalin-fixed, paraffin-embedded human Tonsil stained with CD34 Monoclonal Antibody (HPCA1/763)



Formalin-fixed, paraffin-embedded human Placenta stained with CD34 Monoclonal Antibody (HPCA1/763)

CD34 (Hematopoietic Stem Cell & Endothelial Marker) Antibody - With BSA and Azide - Background

This MAb recognizes a single chain, transmembrane, heavily glycosylated protein of 90-120kDa, which is identified as CD34. Its expression is a hallmark for identifying pluripotent hematopoietic stem or progenitor cells. Its expression is gradually lost as lineage committed progenitors differentiate. CD34 is a marker of choice for staining blasts in acute myeloid leukemia. In addition, CD34 is expressed by soft tissue tumors, such as solitary fibrous tumor and gastrointestinal stromal tumor. Its expression is also found in vascular endothelium. Additionally, it appears that proliferating endothelial cells express this molecule more than the non-proliferating endothelial cells. Anti-CD34 labels > 85% of angiosarcoma and Kaposi s sarcoma, but with a lower specificity.

CD34 (Hematopoietic Stem Cell & Endothelial Marker) Antibody - With BSA and Azide - References

Sato T et al. Blood 94:2548-2554 (1999). | Felshow DM et al. Blood 97:3768-3775 (2001). |