

**Macrophage & Histiocytoma Marker Antibody - With BSA and Azide**  
**Mouse Monoclonal Antibody [Clone D11 ]**  
**Catalog # AH12974**

**Specification**

---

**Macrophage & Histiocytoma Marker Antibody - With BSA and Azide - Product Information**

Application	,14,
Reactivity	Human
Host	Mouse
Clonality	Monoclonal
Isotype	Mouse / IgG1, kappa
Calculated MW	125kDa -135kDa KDa

**Macrophage & Histiocytoma Marker Antibody - With BSA and Azide - Additional Information**

**Storage**

Store at 2 to 8°C. Antibody is stable for 24 months.

**Precautions**

Macrophage & Histiocytoma Marker Antibody - With BSA and Azide is for research use only and not for use in diagnostic or therapeutic procedures.

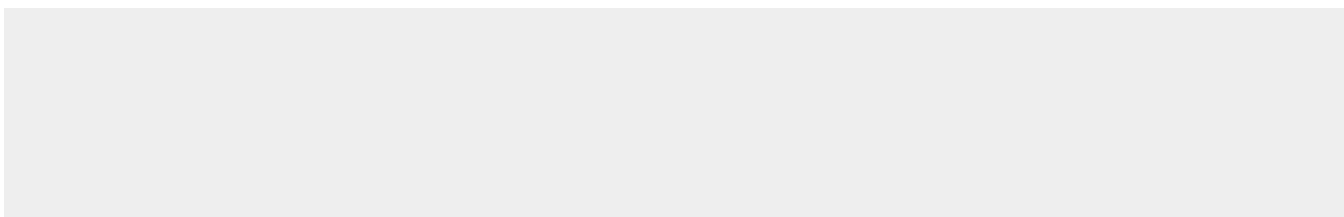
**Macrophage & Histiocytoma Marker Antibody - With BSA and Azide - Protein Information**

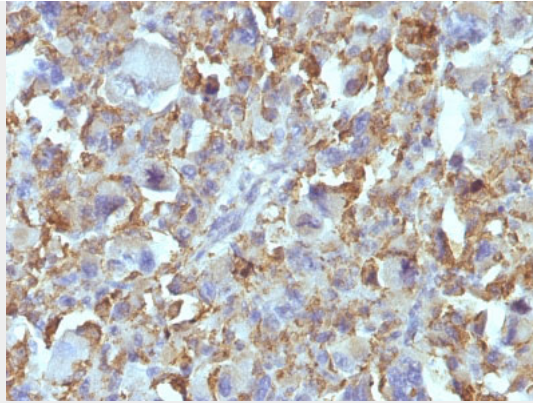
**Macrophage & Histiocytoma Marker Antibody - With BSA and Azide - Protocols**

Provided below are standard protocols that you may find useful for product applications.

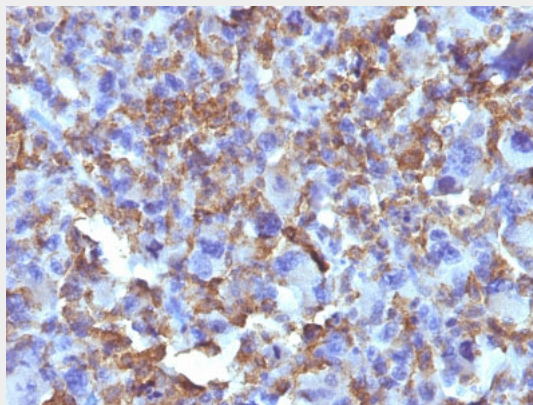
- [Western Blot](#)
- [Blocking Peptides](#)
- [Dot Blot](#)
- [Immunohistochemistry](#)
- [Immunofluorescence](#)
- [Immunoprecipitation](#)
- [Flow Cytometry](#)
- [Cell Culture](#)

**Macrophage & Histiocytoma Marker Antibody - With BSA and Azide - Images**





Formalin-fixed, paraffin-embedded human Histiocytoma stained with Macrophage Monoclonal Antibody (D11).



Formalin-fixed, paraffin-embedded human Histiocytoma stained with Macrophage Monoclonal Antibody (D11).

#### **Macrophage & Histiocytoma Marker Antibody - With BSA and Azide - Background**

In Western blotting, it detects an antigen of 125kDa in human liver and 135kDa in tumors of histiocytic origin. Comparative study of this MAb and a standard CD68 MAb showed that their antigens are different. Its antigen in all macrophage types studied is located on the plasma membrane and within cytoplasmic structures including lysosomes. This MAb shows a restricted reactivity to cells of the monocyte/macrophage system. It specifically reacts with blood monocytes and stains resident macrophages in a wide variety of human tissues. This MAb does not stain antigen-presenting cells, e.g., Langerhans cells. Reportedly, its reactivity is restricted to histiocytes and macrophages.

#### **Macrophage & Histiocytoma Marker Antibody - With BSA and Azide - References**

Rudinskaya TD, Poltoranina VS, Baranov VN, Petrovichev NN, Voytenkov BO, Tretyakov LO. D11, a novel monoclonal antibody specific for human mature macrophages and peripheral blood monocytes. *Immunol Lett.* 1992 Jun;33(1):1-7. | Frenkel MA, Tupitsyn NN, Rudinskaya TD, Poltoranina VS, Lebedeva NB, Volkova MA, Kaletin GI. [Use of a new antimacrophage monoclonal antibody D11 in diagnosis of hemoblastosis]. [Article in Russian] *Gematol Transfuziol.* 1995 Jul-Aug;40(4):13-6. | Tupitsyn NN, et al. Reactivity of anti-macrophage monoclonal antibody D11 in human leukemia and malignant lymphoma. *Int J Cancer.* 1996;68(2):160-3. | Petrovichev NN, et al. Antimacrophage monoclonal antibody D11 in the diagnosis of tumors of histiocytic origin. *Acta Cytol.* 1997;41(2):357-63. 2