

**RBM10 antibody - N-terminal region**  
**Rabbit Polyclonal Antibody**  
**Catalog # AI10006****Specification**

---

**RBM10 antibody - N-terminal region - Product Information**

|                   |  |
|-------------------|--|
| Application       | IHC, WB  |
| Primary Accession | <a href="#">P98175</a>   |
| Other Accession   | <a href="#">P98175</a> , <a href="#">NP_005667</a> , <a href="#">NM_005676</a> |
| Reactivity        | Human, Mouse, Rat, Rabbit, Dog, Guinea Pig, Horse, Bovine                      |
| Predicted         | Human, Mouse, Rat, Rabbit, Pig, Dog, Guinea Pig, Horse, Bovine                 |
| Host              | Rabbit   |
| Clonality         | Polyclonal   |
| Calculated MW     | 104 kDa KDa  |

**RBM10 antibody - N-terminal region - Additional Information****Gene ID** 8241**Alias Symbol** S1-1, TARPS, GPATC9, ZRANB5, GPATCH9, DXS8237E**Other Names**

RNA-binding protein 10, G patch domain-containing protein 9, RNA-binding motif protein 10, RNA-binding protein S1-1, S1-1, RBM10, DXS8237E, GPATC9, GPATCH9, KIAA0122

**Target/Specificity**

RBM10 contains RNA recognition motif found in a variety of RNA binding proteins, including various hnRNP proteins, proteins implicated in regulation of alternative splicing, and protein components of snRNPs. In vitro studies showed that the rat homolog bound to RNA homopolymers, with a preference for G and U polyribonucleotides. This gene is part of a gene cluster on chromosome Xp11.23, and its 3' end lies within 20 kb upstream of UBE1.

**Format**

Liquid. Purified antibody supplied in 1x PBS buffer with 0.09% (w/v) sodium azide and 2% sucrose.

**Reconstitution & Storage**

Add 100 ul of distilled water. Final anti-RBM10 antibody concentration is 1 mg/ml in PBS buffer with 2% sucrose. For longer periods of storage, store at -20°C. Avoid repeat freeze-thaw cycles.

**Precautions**

RBM10 antibody - N-terminal region is for research use only and not for use in diagnostic or therapeutic procedures.

**RBM10 antibody - N-terminal region - Protein Information****Name** RBM10 ([HGNC:9896](#))

**Function**

May be involved in post-transcriptional processing, most probably in mRNA splicing. Binds to RNA homopolymers, with a preference for poly(G) and poly(U) and little for poly(A) (By similarity). May bind to specific miRNA hairpins (PubMed:<a href="http://www.uniprot.org/citations/28431233" target="\_blank">28431233</a>).

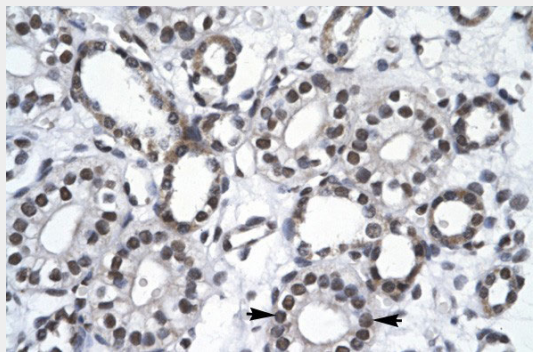
**Cellular Location**

Nucleus. Note=In the extranucleolar nucleoplasm constitutes hundreds of nuclear domains, which dynamically change their structures in a reversible manner. Upon globally reducing RNA polymerase II transcription, the nuclear bodies enlarge and decrease in number. They occur closely adjacent to nuclear speckles or IGCs (interchromatin granule clusters) but coincide with TIDRs (transcription-inactivation-dependent RNA domains)

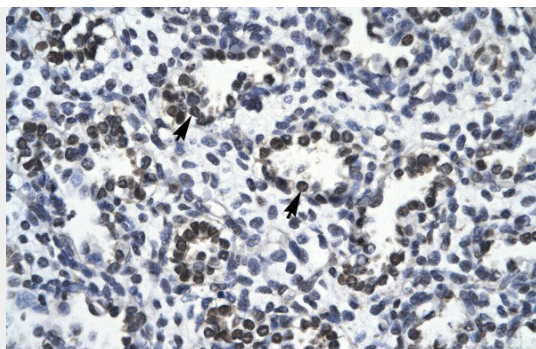
**RBM10 antibody - N-terminal region - Protocols**

Provided below are standard protocols that you may find useful for product applications.

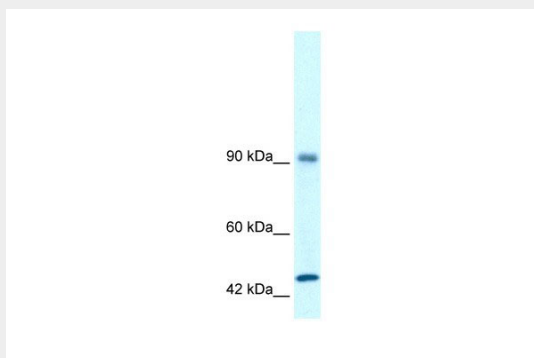
- [Western Blot](#)
- [Blocking Peptides](#)
- [Dot Blot](#)
- [Immunohistochemistry](#)
- [Immunofluorescence](#)
- [Immunoprecipitation](#)
- [Flow Cytometry](#)
- [Cell Culture](#)

**RBM10 antibody - N-terminal region - Images**

RBM10 antibody - N-terminal region (AI10006) in Human kidney cells using Immunohistochemistry  
Rabbit Anti-RBM10 Antibody  
Paraffin Embedded Tissue: Human Kidney  
Cellular Data: Epithelial cells of collecting tubule  
Antibody Concentration: 4.0-8.0 µg/ml  
Magnification: 400X



RBM10 antibody - N-terminal region (AI10006) in Human Lung cells using Immunohistochemistry  
Rabbit Anti-RBM10 Antibody  
Paraffin Embedded Tissue: Human Lung  
Cellular Data: Alveolar cells  
Antibody Concentration: 4.0-8.0 µg/ml  
Magnification: 400X



RBM10 antibody - N-terminal region (AI10006) in Human Daudi cells using Western Blot  
WB Suggested Anti-RBM10 Antibody Titration: 1.4µg/ml  
ELISA Titer: 1:62500  
Positive Control: Daudi cell lysate  
RBM10 is strongly supported by BioGPS gene expression data to be expressed in Human Daudi cells

### **RBM10 antibody - N-terminal region - Background**

This is a rabbit polyclonal antibody against RBM10. It was validated on Western Blot and immunohistochemistry by Abgent. At Abgent we manufacture rabbit polyclonal antibodies on a large scale (200-1000 products/month) of high throughput manner. Our antibodies are peptide based and protein family oriented. We usually provide antibodies covering each member of a whole protein family of your interest. We also use our best efforts to provide you antibodies recognize various epitopes of a target protein. For availability of antibody needed for your experiment, please inquire ([sales@abgent.com](mailto:sales@abgent.com)).