

ATF1 Antibody - N-terminal region
Rabbit Polyclonal Antibody
Catalog # AI10014**Specification**

ATF1 Antibody - N-terminal region - Product Information

Application	WB
Primary Accession	P18846
Other Accession	P18846 , NP_005162 , NM_005171
Reactivity	Human, Mouse, Rat, Rabbit, Dog, Guinea Pig, Horse, Bovine
Predicted	Human, Mouse, Rat, Rabbit, Dog, Guinea Pig, Horse, Bovine
Host	Rabbit
Clonality	Polyclonal
Calculated MW	29 kDa KDa

ATF1 Antibody - N-terminal region - Additional Information**Gene ID** 466**Alias Symbol** EWS-ATF1, FUS/ATF-1, TREB36**Other Names**

Cyclic AMP-dependent transcription factor ATF-1, cAMP-dependent transcription factor ATF-1, Activating transcription factor 1, Protein TREB36, ATF1

Target/Specificity

ATF1 binds the cAMP response element (CRE) (consensus: 5'-GTGACGT [AC] [AG]-3'), a sequence present in many viral and cellular promoters. ATF1 binds to the Tax-responsive element (TRE) of HTLV-I. ATF1 mediates PKA-induced stimulation of CRE-reporter genes.

Format

Liquid. Purified antibody supplied in 1x PBS buffer with 0.09% (w/v) sodium azide and 2% sucrose.

Reconstitution & Storage

Add 50 ul, l of distilled water. Final Anti-ATF1 antibody concentration is 1 mg/ml in PBS buffer with 2% sucrose. For longer periods of storage, store at -20°C. Avoid repeat freeze-thaw cycles.

Precautions

ATF1 Antibody - N-terminal region is for research use only and not for use in diagnostic or therapeutic procedures.

ATF1 Antibody - N-terminal region - Protein Information**Name** ATF1**Function**

This protein binds the cAMP response element (CRE) (consensus: 5'-GTGACGT[AC][AG]-3'), a

sequence present in many viral and cellular promoters. Binds to the Tax-responsive element (TRE) of HTLV-I. Mediates PKA-induced stimulation of CRE-reporter genes. Represses the expression of FTH1 and other antioxidant detoxification genes. Triggers cell proliferation and transformation.

Cellular Location

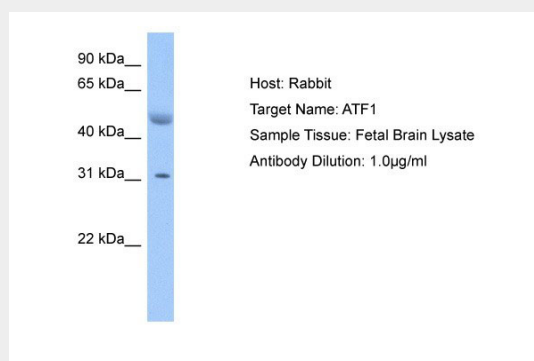
Nucleus.

ATF1 Antibody - N-terminal region - Protocols

Provided below are standard protocols that you may find useful for product applications.

- [Western Blot](#)
- [Blocking Peptides](#)
- [Dot Blot](#)
- [Immunohistochemistry](#)
- [Immunofluorescence](#)
- [Immunoprecipitation](#)
- [Flow Cytometry](#)
- [Cell Culture](#)

ATF1 Antibody - N-terminal region - Images



ATF1 Antibody - N-terminal region (AI10014) in Human Fetal Brain cells using Western Blot
Host: Rabbit
Target Name: ATF1
Sample Tissue: Fetal Brain lysates
Antibody Dilution: 1.0µg/ml

ATF1 Antibody - N-terminal region - Background

This is a rabbit polyclonal antibody against ATF1. It was validated on Western Blot by Abgent. At Abgent we manufacture rabbit polyclonal antibodies on a large scale (200-1000 products/month) of high throughput manner. Our antibodies are peptide based and protein family oriented. We usually provide antibodies covering each member of a whole protein family of your interest. We also use our best efforts to provide you antibodies recognize various epitopes of a target protein. For availability of antibody needed for your experiment, please inquire (sales@abgent.com).