

TSFM antibody - middle region
Rabbit Polyclonal Antibody
Catalog # AI10017**Specification**

TSFM antibody - middle region - Product Information

Application	WB
Primary Accession	P43897
Other Accession	P43897 , NP_005717 , NM_005726
Reactivity	Human, Mouse, Rat, Rabbit, Guinea Pig, Bovine
Predicted	Human, Mouse, Rabbit, Guinea Pig
Host	Rabbit
Clonality	Polyclonal
Calculated MW	38 kDa KDa

TSFM antibody - middle region - Additional Information**Gene ID** 10102

Alias Symbol	COXPD3, EF-TS, EF-Tsmt, EFTS, EFTSMT
Other Names	
Elongation factor Ts, mitochondrial {ECO:0000255 HAMAP-Rule:MF_03135}, EF-Ts {ECO:0000255 HAMAP-Rule:MF_03135}, EF-TsMt {ECO:0000255 HAMAP-Rule:MF_03135}, TSFM {ECO:0000255 HAMAP-Rule:MF_03135}	

Target/Specificity

The TSFM protein is a mitochondrial translation elongation factor. Synthesis of the 13 mitochondrial-encoded proteins occurs on a dedicated mitochondrial translation apparatus similar to that found in prokaryotes and requires, in addition to the tRNAs and rRNAs encoded in mtDNA, the concerted action of several translation factors and a large number of mitochondrial ribosomal proteins, all of which are encoded by nuclear genes. Synthesis of the 13 mitochondrial-encoded proteins occurs on a dedicated mitochondrial translation apparatus similar to that found in prokaryotes and requires, in addition to the tRNAs and rRNAs encoded in mtDNA, the concerted action of several translation factors and a large number of mitochondrial ribosomal proteins, all of which are encoded by nuclear genes. The TSFM gene encodes a mitochondrial translation elongation factor (Smeitink et al., 2006 [PubMed 17033963]). [supplied by OMIM].

Format

Liquid. Purified antibody supplied in 1x PBS buffer with 0.09% (w/v) sodium azide and 2% sucrose.

Reconstitution & Storage

Add 50 ul of distilled water. Final anti-TSFM antibody concentration is 1 mg/ml in PBS buffer with 2% sucrose. For longer periods of storage, store at -20°C. Avoid repeat freeze-thaw cycles.

Precautions

TSFM antibody - middle region is for research use only and not for use in diagnostic or therapeutic procedures.

TSFM antibody - middle region - Protein Information

Name TSFM {ECO:0000255|HAMAP-Rule:MF_03135}

Function

Associates with the EF-Tu.GDP complex and induces the exchange of GDP to GTP. It remains bound to the aminoacyl-tRNA.EF- Tu.GTP complex up to the GTP hydrolysis stage on the ribosome.

Cellular Location

Mitochondrion.

Tissue Location

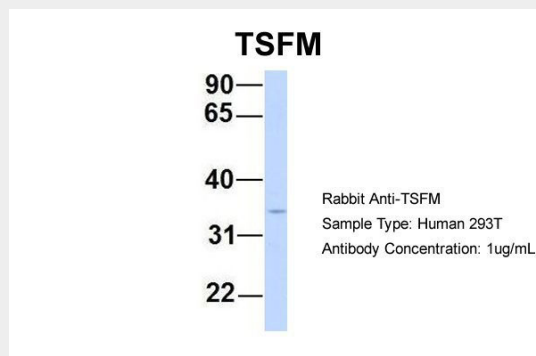
Expressed in all tissues, with the highest levels of expression in skeletal muscle, liver and kidney

TSFM antibody - middle region - Protocols

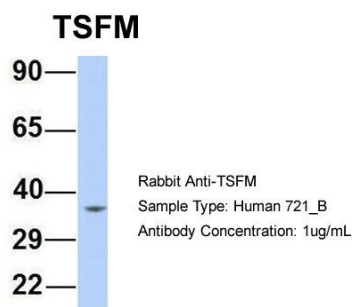
Provided below are standard protocols that you may find useful for product applications.

- [Western Blot](#)
- [Blocking Peptides](#)
- [Dot Blot](#)
- [Immunohistochemistry](#)
- [Immunofluorescence](#)
- [Immunoprecipitation](#)
- [Flow Cytometry](#)
- [Cell Culture](#)

TSFM antibody - middle region - Images



TSFM antibody - middle region (AI10017) in Human 293T cells using Western Blot
Host:Rabbit
Target Name:TSFM
Sample Tissue:Human 293T
Antibody Dilution: 1.0µg/ml
There is BioGPS gene expression data showing that TSFM is expressed in HEK293T



TSFM antibody - middle region (AI10017) in Human 721_B cells using Western Blot

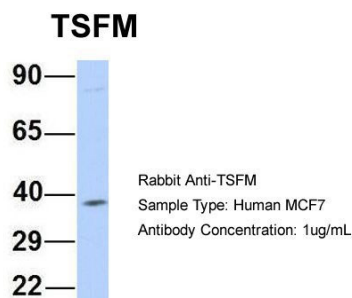
Host:Rabbit

Target Name:TSFM

Sample Tissue:Human 721_B

Antibody Dilution: 1.0µg/ml

TSFM is strongly supported by BioGPS gene expression data to be expressed in Human 721_B cells



TSFM antibody - middle region (AI10017) in Human MCF7 cells using Western Blot

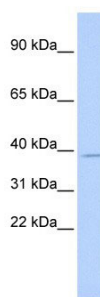
Host:Rabbit

Target Name:TSFM

Sample Tissue:Human MCF7

Antibody Dilution: 1.0µg/ml

TSFM is strongly supported by BioGPS gene expression data to be expressed in MCF7



TSFM antibody - middle region (AI10017) in Human HeLa cells using Western Blot

WB Suggested Anti-TSFM Antibody Titration: 0.2-1 µg/ml

ELISA Titer: 1:312500

Positive Control: Hela cell lysate

.TSFM is strongly supported by BioGPS gene expression data to be expressed in HeLa

TSFM antibody - middle region - Background

This is a rabbit polyclonal antibody against TSFM. It was validated on Western Blot using a cell lysate as a positive control. Abgent strives to provide antibodies covering each member of a whole protein family of your interest. We also use our best efforts to provide you antibodies recognize various epitopes of a target protein. For availability of antibody needed for your experiment, please inquire (sales@abgent.com).