

**IKZF1 antibody - middle region**  
**Rabbit Polyclonal Antibody**  
**Catalog # AI10018****Specification**

---

**IKZF1 antibody - middle region - Product Information**

Application	WB
Primary Accession	<a href="#">Q13422</a>
Other Accession	<a href="#">Q13422</a> , <a href="#">NP_006051</a> , <a href="#">NM_006060</a>
Reactivity	Human, Mouse, Rat, Rabbit, Dog, Guinea Pig, Horse, Bovine
Predicted	Human, Mouse, Rat, Rabbit, Pig, Chicken, Dog, Guinea Pig, Horse, Bovine
Host	Rabbit
Clonality	Polyclonal
Calculated MW	57 kDa KDa

**IKZF1 antibody - middle region - Additional Information****Gene ID** 10320**Alias Symbol** Hs.54452, IK1, IKAROS, LYF1, PRO0758, ZNFN1A1, hik-1**Other Names**

DNA-binding protein Ikaros, Ikaros family zinc finger protein 1, Lymphoid transcription factor LyF-1, IKZF1, IK1, IKAROS, LYF1, ZNFN1A1

**Target/Specificity**

IKZF1 binds and activates the enhancer (delta-A element) of the CD3-delta gene. It functions in the specification and the maturation of the T-lymphocyte. It also interacts with a critical control element in the TDT (terminal deoxynucleotidyltransferase) promoter as well as with the promoters for other genes expressed during early stages of B- and T-cell development.

**Format**

Liquid. Purified antibody supplied in 1x PBS buffer with 0.09% (w/v) sodium azide and 2% sucrose.

**Reconstitution & Storage**

Add 50 ul of distilled water. Final anti-IKZF1 antibody concentration is 1 mg/ml in PBS buffer with 2% sucrose. For longer periods of storage, store at -20°C. Avoid repeat freeze-thaw cycles.

**Precautions**

IKZF1 antibody - middle region is for research use only and not for use in diagnostic or therapeutic procedures.

**IKZF1 antibody - middle region - Protein Information****Name** IKZF1

## Synonyms IK1, IKAROS, LYF1, ZNFN1A1

### Function

Transcription regulator of hematopoietic cell differentiation (PubMed:<a href="http://www.uniprot.org/citations/17934067" target="\_blank">17934067</a>). Binds gamma-satellite DNA (PubMed:<a href="http://www.uniprot.org/citations/17135265" target="\_blank">17135265</a>, PubMed:<a href="http://www.uniprot.org/citations/19141594" target="\_blank">19141594</a>). Plays a role in the development of lymphocytes, B- and T-cells. Binds and activates the enhancer (delta-A element) of the CD3-delta gene. Repressor of the TDT (fikzfterminal deoxynucleotidyltransferase) gene during thymocyte differentiation. Regulates transcription through association with both HDAC-dependent and HDAC-independent complexes. Targets the 2 chromatin-remodeling complexes, NuRD and BAF (SWI/SNF), in a single complex (PYR complex), to the beta-globin locus in adult erythrocytes. Increases normal apoptosis in adult erythroid cells. Confers early temporal competence to retinal progenitor cells (RPCs) (By similarity). Function is isoform-specific and is modulated by dominant-negative inactive isoforms (PubMed:<a href="http://www.uniprot.org/citations/17135265" target="\_blank">17135265</a>, PubMed:<a href="http://www.uniprot.org/citations/17934067" target="\_blank">17934067</a>).

### Cellular Location

Nucleus. Note=In resting lymphocytes, distributed diffusely throughout the nucleus. Localizes to pericentromeric heterochromatin in proliferating cells. This localization requires DNA binding which is regulated by phosphorylation / dephosphorylation events. [Isoform Ik6]: Cytoplasm.

### Tissue Location

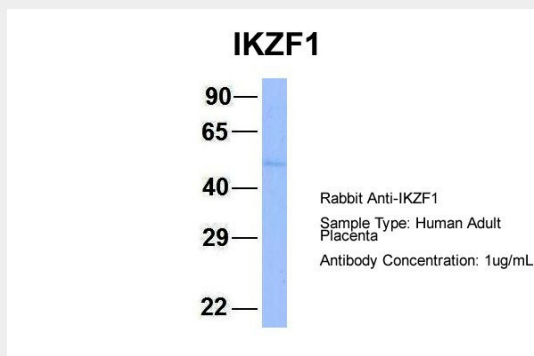
Abundantly expressed in thymus, spleen and peripheral blood Leukocytes and lymph nodes. Lower expression in bone marrow and small intestine.

## IKZF1 antibody - middle region - Protocols

Provided below are standard protocols that you may find useful for product applications.

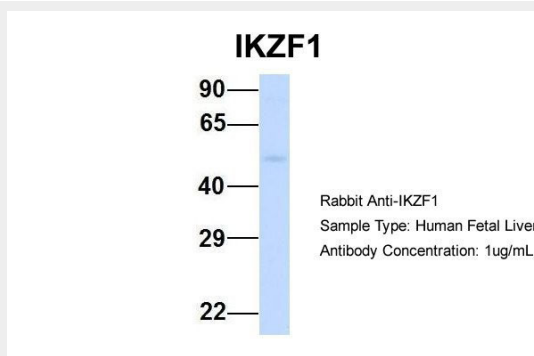
- [Western Blot](#)
- [Blocking Peptides](#)
- [Dot Blot](#)
- [Immunohistochemistry](#)
- [Immunofluorescence](#)
- [Immunoprecipitation](#)
- [Flow Cytometry](#)
- [Cell Culture](#)

## IKZF1 antibody - middle region - Images

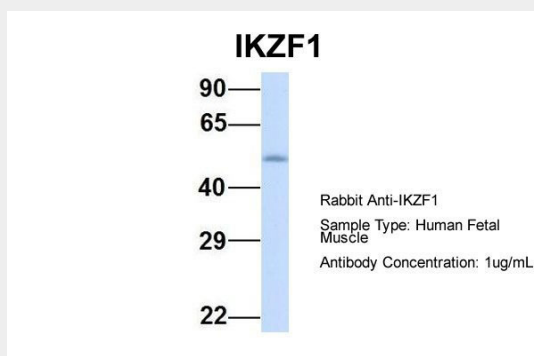


IKZF1 antibody - middle region (AI10018) in Hum. Adult Placenta cells using Western Blot

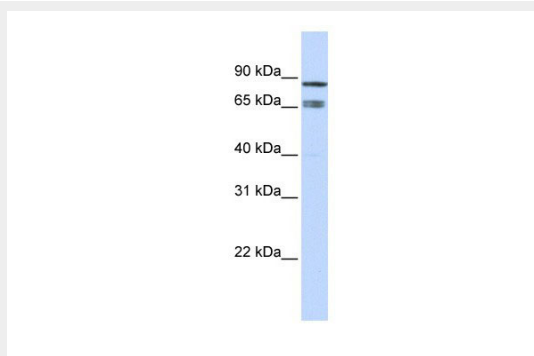
Host: Rabbit  
Target Name: CHAD  
Sample Tissue: Human Adult Placenta  
Antibody Dilution: 1.0µg/ml



IKZF1 antibody - middle region (AI10018) in Hum. Fetal Liver cells using Western Blot  
Host: Rabbit  
Target Name: IKZF1  
Sample Tissue: Human Fetal Liver  
Antibody Dilution: 1.0µg/ml



IKZF1 antibody - middle region (AI10018) in Hum. Fetal Muscle cells using Western Blot  
Host: Rabbit  
Target Name: IKZF1  
Sample Tissue: Human Fetal Muscle  
Antibody Dilution: 1.0µg/ml



IKZF1 antibody - middle region (AI10018) in Human HeLa cells using Western Blot  
WB Suggested Anti-IKZF1 Antibody Titration: 0.2-1 µg/ml  
ELISA Titer: 1:312500  
Positive Control: HeLa cell lysate

**IKZF1 antibody - middle region - Background**

This is a rabbit polyclonal antibody against IKZF1. It was validated on Western Blot using a cell lysate as a positive control. Abgent strives to provide antibodies covering each member of a whole protein family of your interest. We also use our best efforts to provide you antibodies recognize various epitopes of a target protein. For availability of antibody needed for your experiment, please inquire ([sales@abgent.com](mailto:sales@abgent.com)).