

**OSR2 antibody - N-terminal region**  
**Rabbit Polyclonal Antibody**  
**Catalog # AI10023****Specification**

---

**OSR2 antibody - N-terminal region - Product Information**

Application	WB
Primary Accession	<a href="#">Q8N2R0</a>
Other Accession	<a href="#">Q8N2R0</a> , <a href="#">NP_443727</a> , <a href="#">NM_053001</a>
Reactivity	Human, Mouse, Rat, Rabbit, Pig, Dog, Guinea Pig, Horse, Bovine
Predicted	Human, Mouse, Rat, Rabbit, Pig, Chicken, Dog, Guinea Pig, Horse, Bovine
Host	Rabbit
Clonality	Polyclonal
Calculated MW	31 kDa KDa

**OSR2 antibody - N-terminal region - Additional Information****Gene ID** 116039**Other Names**

Protein odd-skipped-related 2, OSR2

**Target/Specificity**

Osr2 is a zinc finger containing protein related to Drosophila Odd-skipped. Its mRNA expression is specifically activated in the nascent palatal mesenchyme at the onset of palatal outgrowth. Osr2 mutants exhibit altered gene expression patterns, including those of Osr1, Pax9 and Tgfb3, during palate development.

**Format**

Liquid. Purified antibody supplied in 1x PBS buffer with 0.09% (w/v) sodium azide and 2% sucrose.

**Reconstitution & Storage**

Add 50 ul of distilled water. Final anti-OSR2 antibody concentration is 1 mg/ml in PBS buffer with 2% sucrose. For longer periods of storage, store at -20°C. Avoid repeat freeze-thaw cycles.

**Precautions**

OSR2 antibody - N-terminal region is for research use only and not for use in diagnostic or therapeutic procedures.

**OSR2 antibody - N-terminal region - Protein Information****Name** OSR2 ([HGNC:15830](#))**Function**

May be involved in the development of the mandibular molar tooth germ at the bud stage.

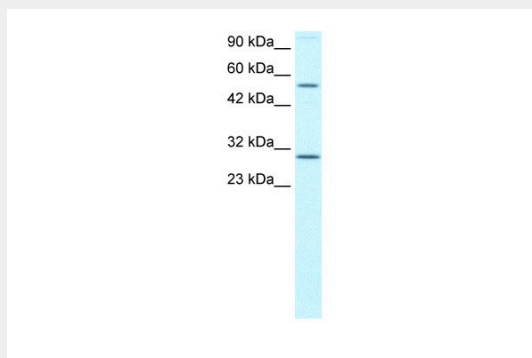
**Cellular Location**

Nucleus.

**OSR2 antibody - N-terminal region - Protocols**

Provided below are standard protocols that you may find useful for product applications.

- [Western Blot](#)
- [Blocking Peptides](#)
- [Dot Blot](#)
- [Immunohistochemistry](#)
- [Immunofluorescence](#)
- [Immunoprecipitation](#)
- [Flow Cytometry](#)
- [Cell Culture](#)

**OSR2 antibody - N-terminal region - Images**

OSR2 antibody - N-terminal region (AI10023) in Human HeLa cells using Western Blot  
WB Suggested Anti-OSR2 Antibody Titration: 0.2-1 µg/ml  
ELISA Titer: 1:12500  
Positive Control: Hela cell lysate

**OSR2 antibody - N-terminal region - Background**

This is a rabbit polyclonal antibody against OSR2. It was validated on Western Blot using a cell lysate as a positive control. Abgent strives to provide antibodies covering each member of a whole protein family of your interest. We also use our best efforts to provide you antibodies recognize various epitopes of a target protein. For availability of antibody needed for your experiment, please inquire (sales@abgent.com).