

**ELF2 antibody - N-terminal region**  
**Rabbit Polyclonal Antibody**  
**Catalog # AI10026****Specification**

---

**ELF2 antibody - N-terminal region - Product Information**

Application	WB
Primary Accession	<a href="#">Q15723</a>
Other Accession	<a href="#">Q15723-3</a> , <a href="#">NP_006865</a> , <a href="#">NM_006874</a>
Reactivity	Human, Mouse, Rat, Rabbit, Dog, Guinea Pig, Horse, Bovine
Predicted	Human, Mouse, Rat, Rabbit, Chicken, Dog, Guinea Pig, Horse, Bovine
Host	Rabbit
Clonality	Polyclonal
Calculated MW	57 kDa KDa

**ELF2 antibody - N-terminal region - Additional Information****Gene ID** 1998

Alias Symbol **EU32, NERF, NERF-2, NERF-1A, NERF-1B, NERF-1a,b**

**Other Names**

ETS-related transcription factor Elf-2, E74-like factor 2, New ETS-related factor, ELF2  
{ECO:0000312|EMBL:AAF671951}

**Target/Specificity**

The ELF2 gene encodes a protein that physically interacts with AML1 and mediates opposing effects on AML1-mediated transcription of the B cell-specific blk gene.

**Format**

Liquid. Purified antibody supplied in 1x PBS buffer with 0.09% (w/v) sodium azide and 2% sucrose.

**Reconstitution & Storage**

Add 50 ul of distilled water. Final anti-ELF2 antibody concentration is 1 mg/ml in PBS buffer with 2% sucrose. For longer periods of storage, store at -20°C. Avoid repeat freeze-thaw cycles.

**Precautions**

ELF2 antibody - N-terminal region is for research use only and not for use in diagnostic or therapeutic procedures.

**ELF2 antibody - N-terminal region - Protein Information**

**Name** ELF2 {ECO:0000312|EMBL:AAF67195.1}

**Function**

Isoform 1 transcriptionally activates the LYN and BLK promoters and acts synergistically with

RUNX1 to transactivate the BLK promoter.

#### **Cellular Location**

Nucleus.

#### **Tissue Location**

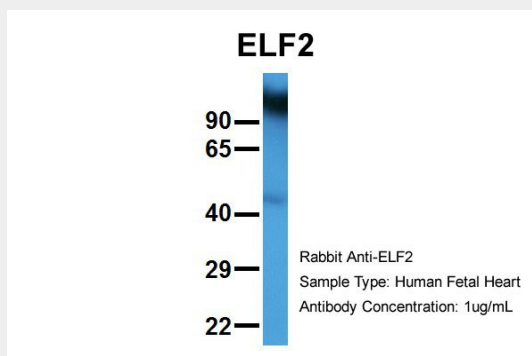
Expressed in all fetal and adult tissues examined. Among fetal tissues, highest levels of expression detected in heart, lung, liver and kidney, and lower levels in brain. Among adult tissues, highest levels of expression detected in heart, placenta, lung, skeletal muscle, spleen, thymus, testis and ovary. Moderate expression in prostate, small intestine, kidney, liver and pancreas, and weak expression in colon, brain and peripheral blood lymphocytes

#### **ELF2 antibody - N-terminal region - Protocols**

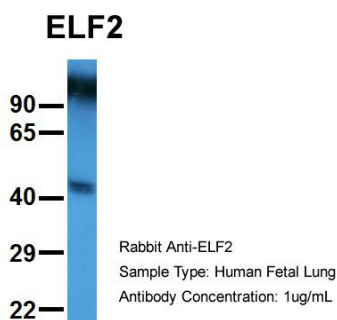
Provided below are standard protocols that you may find useful for product applications.

- [Western Blot](#)
- [Blocking Peptides](#)
- [Dot Blot](#)
- [Immunohistochemistry](#)
- [Immunofluorescence](#)
- [Immunoprecipitation](#)
- [Flow Cytometry](#)
- [Cell Culture](#)

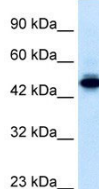
#### **ELF2 antibody - N-terminal region - Images**



ELF2 antibody - N-terminal region (AI10026) in Hum. Fetal Heart cells using Western Blot  
Host: Rabbit  
Target Name: ELF2  
Sample Tissue: Human Fetal Heart  
Antibody Dilution: 1.0µg/ml



ELF2 antibody - N-terminal region (AI10026) in Hum. Fetal Lung cells using Western Blot  
Host: Rabbit  
Target Name: ELF2  
Sample Tissue: Human Fetal Lung  
Antibody Dilution: 1.0µg/ml



ELF2 antibody - N-terminal region (AI10026) in Human Jurkat cells using Western Blot  
WB Suggested Anti-ELF2 Antibody Titration: 0.2-1 µg/ml  
ELISA Titer: 1:12500  
Positive Control: Jurkat cell lysate

### **ELF2 antibody - N-terminal region - Background**

This is a rabbit polyclonal antibody against ELF2. It was validated on Western Blot using a cell lysate as a positive control. Abgent strives to provide antibodies covering each member of a whole protein family of your interest. We also use our best efforts to provide you antibodies recognize various epitopes of a target protein. For availability of antibody needed for your experiment, please inquire ([sales@abgent.com](mailto:sales@abgent.com)).