

**SCMH1 antibody - middle region**  
**Rabbit Polyclonal Antibody**  
**Catalog # AI10028****Specification**

---

**SCMH1 antibody - middle region - Product Information**

Application	WB
Primary Accession	<a href="#">Q96GD3</a>
Other Accession	<a href="#">Q96GD3-4</a> , <a href="#">NP_036368</a> , <a href="#">NM_012236</a>
Reactivity	Human, Mouse, Rat, Rabbit, Dog, Horse, Bovine, Yeast
Predicted	Human, Mouse, Rat, Rabbit, Chicken, Dog, Horse, Bovine
Host	Rabbit
Clonality	Polyclonal
Calculated MW	65 kDa KDa

**SCMH1 antibody - middle region - Additional Information****Gene ID** 22955

Alias Symbol	<b>Scml3</b>
--------------	--------------

**Other Names**  
Polycomb protein SCMH1, Sex comb on midleg homolog 1, SCMH1  
{ECO:0000312|EMBL:CAH727931}

**Target/Specificity**

SCMH1 is a component of the Polycomb group (PcG) multiprotein PRC1 complex, a complex required to maintain the transcriptionally repressive state of many genes, including Hox genes, throughout development. PcG PRC1 complex acts via chromatin remodeling and modification of histones, it mediates monoubiquitination of histone H2A 'Lys-119', rendering chromatin heritably changed in its expressibility.

**Format**

Liquid. Purified antibody supplied in 1x PBS buffer with 0.09% (w/v) sodium azide and 2% sucrose.

**Reconstitution & Storage**

Add 50 ul of distilled water. Final anti-SCMH1 antibody concentration is 1 mg/ml in PBS buffer with 2% sucrose. For longer periods of storage, store at -20°C. Avoid repeat freeze-thaw cycles.

**Precautions**

SCMH1 antibody - middle region is for research use only and not for use in diagnostic or therapeutic procedures.

**SCMH1 antibody - middle region - Protein Information**

**Name** SCMH1 {ECO:0000312|EMBL:CAH72793.1}

**Function**

Associates with Polycomb group (PcG) multiprotein complexes; the complex class is required to maintain the transcriptionally repressive state of some genes.

**Cellular Location**

Nucleus.

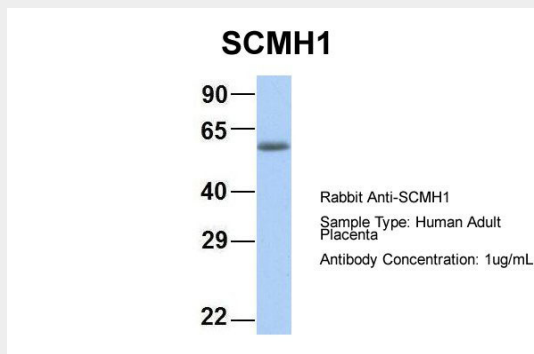
**Tissue Location**

Strongly expressed in heart, muscle and pancreas. Weakly expressed in brain, placenta, lung, liver and kidney

**SCMH1 antibody - middle region - Protocols**

Provided below are standard protocols that you may find useful for product applications.

- [Western Blot](#)
- [Blocking Peptides](#)
- [Dot Blot](#)
- [Immunohistochemistry](#)
- [Immunofluorescence](#)
- [Immunoprecipitation](#)
- [Flow Cytometry](#)
- [Cell Culture](#)

**SCMH1 antibody - middle region - Images**

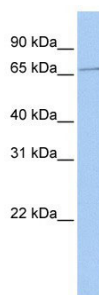
SCMH1 antibody - middle region (AI10028) in Hum. Adult Placenta cells using Western Blot

Host: Rabbit

Target Name: CHAD

Sample Tissue: Human Adult Placenta

Antibody Dilution: 1.0µg/ml



SCMH1 antibody - middle region (AI10028) in Human MCF-7 cells using Western Blot  
WB Suggested Anti-SCMH1 Antibody Titration: 0.2-1 µg/ml  
ELISA Titer: 1:62500  
Positive Control: MCF7 cell lysate

#### **SCMH1 antibody - middle region - Background**

This is a rabbit polyclonal antibody against SCM1. It was validated on Western Blot using a cell lysate as a positive control. Abgent strives to provide antibodies covering each member of a whole protein family of your interest. We also use our best efforts to provide you antibodies recognize various epitopes of a target protein. For availability of antibody needed for your experiment, please inquire ([sales@abgent.com](mailto:sales@abgent.com)).