

**FOXE1 antibody - middle region**  
**Rabbit Polyclonal Antibody**  
**Catalog # AI10029****Specification**

---

**FOXE1 antibody - middle region - Product Information**

Application	WB
Primary Accession	<a href="#">O00358</a>
Other Accession	<a href="#">O00358</a> , <a href="#">NP_004464</a> , <a href="#">NM_004473</a>
Reactivity	Human, Mouse, Rat, Pig, Guinea Pig, Bovine
Predicted	Human, Mouse, Rat, Bovine
Host	Rabbit
Clonality	Polyclonal
Calculated MW	38 kDa KDa

**FOXE1 antibody - middle region - Additional Information****Gene ID 2304**

Alias Symbol	FKHL15, FOXE2, HFKH4, HFKL5, TTF2, TTF-2, TTF2
--------------	--

**Other Names**

Forkhead box protein E1, Forkhead box protein E2, Forkhead-related protein FKHL15, HFKH4, HNF-3/fork head-like protein 5, HFKL5, Thyroid transcription factor 2, TTF-2, FOXE1, FKHL15, FOXE2, TTF2, TTF2

**Target/Specificity**

FOXE1 belongs to the forkhead family of transcription factors, which is characterized by a distinct forkhead domain. It functions as a thyroid transcription factor which likely plays a crucial role in thyroid morphogenesis. Mutations in this gene are associated with congenital hypothyroidism and cleft palate with thyroid dysgenesis. The map localization of this gene suggests it may also be a candidate gene for squamous cell epithelioma and hereditary sensory neuropathy type I. This intronless gene belongs to the forkhead family of transcription factors, which is characterized by a distinct forkhead domain. This gene functions as a thyroid transcription factor which likely plays a crucial role in thyroid morphogenesis. Mutations in this gene are associated with congenital hypothyroidism and cleft palate with thyroid dysgenesis. The map localization of this gene suggests it may also be a candidate gene for squamous cell epithelioma and hereditary sensory neuropathy type I. Publication Note: This RefSeq record includes a subset of the publications that are available for this gene. Please see the Entrez Gene record to access additional publications.

**Format**

Liquid. Purified antibody supplied in 1x PBS buffer with 0.09% (w/v) sodium azide and 2% sucrose.

**Reconstitution & Storage**

Add 50 ul of distilled water. Final anti-FOXE1 antibody concentration is 1 mg/ml in PBS buffer with 2% sucrose. For longer periods of storage, store at -20°C. Avoid repeat freeze-thaw cycles.

**Precautions**

FOXE1 antibody - middle region is for research use only and not for use in diagnostic or

therapeutic procedures.

## **FOXE1 antibody - middle region - Protein Information**

**Name** FOXE1

**Synonyms** FKHL15, FOXE2, TITF2, TTF2

### **Function**

Transcription factor that binds consensus sites on a variety of gene promoters and activate their transcription. Involved in proper palate formation, most probably through the expression of MSX1 and TGFB3 genes which are direct targets of this transcription factor. Also implicated in thyroid gland morphogenesis. May indirectly play a role in cell growth and migration through the regulation of WNT5A expression.

### **Cellular Location**

Nucleus.

### **Tissue Location**

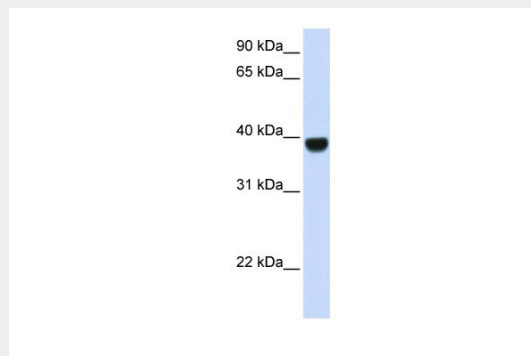
Detected in adult brain, placenta, lung, liver, skeletal muscle, kidney, pancreas, heart, colon, small intestine testis and thymus. Expression was strongest in heart and pancreas

## **FOXE1 antibody - middle region - Protocols**

Provided below are standard protocols that you may find useful for product applications.

- [Western Blot](#)
- [Blocking Peptides](#)
- [Dot Blot](#)
- [Immunohistochemistry](#)
- [Immunofluorescence](#)
- [Immunoprecipitation](#)
- [Flow Cytometry](#)
- [Cell Culture](#)

## **FOXE1 antibody - middle region - Images**



FOXE1 antibody - middle region (AI10029) in Human Muscle cells using Western Blot  
WB Suggested Anti-FOXE1 Antibody Titration: 0.2-1 µg/ml  
ELISA Titer: 1:62500

Positive Control: Human Muscle

**FOX E1 antibody - middle region - Background**

This is a rabbit polyclonal antibody against FOX E1. It was validated on Western Blot using a cell lysate as a positive control. Abgent strives to provide antibodies covering each member of a whole protein family of your interest. We also use our best efforts to provide you antibodies recognize various epitopes of a target protein. For availability of antibody needed for your experiment, please inquire ([sales@abgent.com](mailto:sales@abgent.com)).