

**SSBP2 antibody - N-terminal region**  
**Rabbit Polyclonal Antibody**  
**Catalog # AI10031****Specification**

---

**SSBP2 antibody - N-terminal region - Product Information**

Application	IHC, WB
Primary Accession	<a href="#">P81877</a>
Other Accession	<a href="#">P81877</a> , <a href="#">NP_036578</a> , <a href="#">NM_012446</a>
Reactivity	Human, Mouse, Rat, Rabbit, Zebrafish, Pig, Dog, Guinea Pig, Horse, Bovine
Predicted	Human, Mouse, Rat, Pig, Chicken, Dog, Guinea Pig, Horse, Bovine
Host	Rabbit
Clonality	Polyclonal
Calculated MW	38 kDa kDa

**SSBP2 antibody - N-terminal region - Additional Information****Gene ID** 23635**Alias Symbol** DKFZp686F03273, HSPC116, SOSS-B2**Other Names**

Single-stranded DNA-binding protein 2, Sequence-specific single-stranded-DNA-binding protein 2, SSBP2, SSDP2

**Target/Specificity**

SSBP2 is a member of a closely related, evolutionarily conserved, and ubiquitously expressed gene family. It is also a potential tumor suppressor.

**Format**

Liquid. Purified antibody supplied in 1x PBS buffer with 0.09% (w/v) sodium azide and 2% sucrose.

**Reconstitution & Storage**

Add 50 ul of distilled water. Final anti-SSBP2 antibody concentration is 1 mg/ml in PBS buffer with 2% sucrose. For longer periods of storage, store at -20°C. Avoid repeat freeze-thaw cycles.

**Precautions**

SSBP2 antibody - N-terminal region is for research use only and not for use in diagnostic or therapeutic procedures.

**SSBP2 antibody - N-terminal region - Protein Information****Name** SSBP2**Synonyms** SSDP2**Cellular Location**

Nucleus.

**Tissue Location**

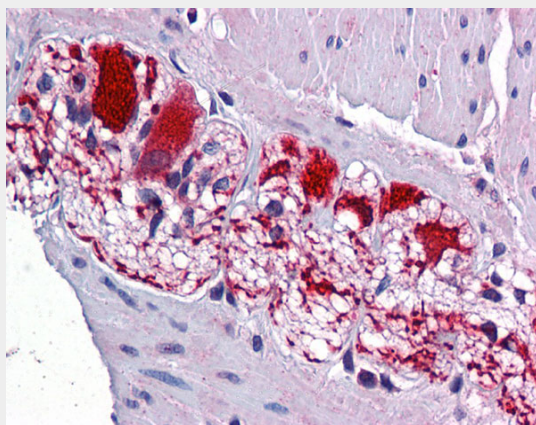
Ubiquitous..

**SSBP2 antibody - N-terminal region - Protocols**

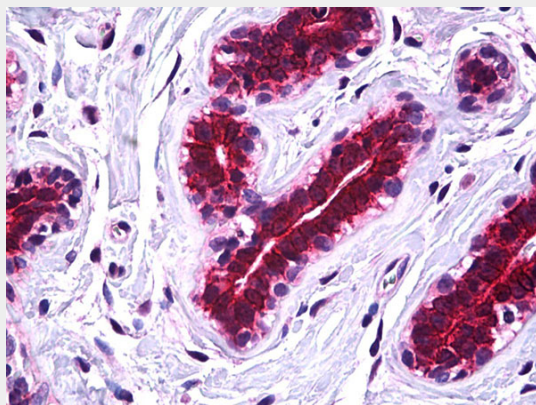
Provided below are standard protocols that you may find useful for product applications.

- [Western Blot](#)
- [Blocking Peptides](#)
- [Dot Blot](#)
- [Immunohistochemistry](#)
- [Immunofluorescence](#)
- [Immunoprecipitation](#)
- [Flow Cytometry](#)
- [Cell Culture](#)

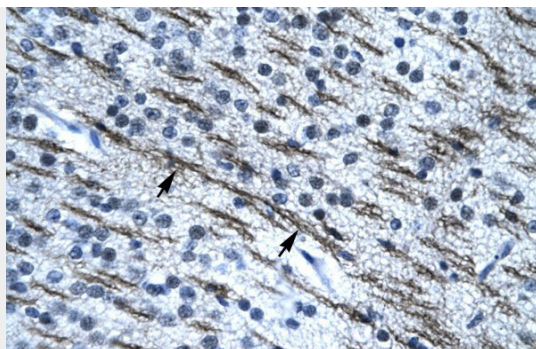
**SSBP2 antibody - N-terminal region - Images**



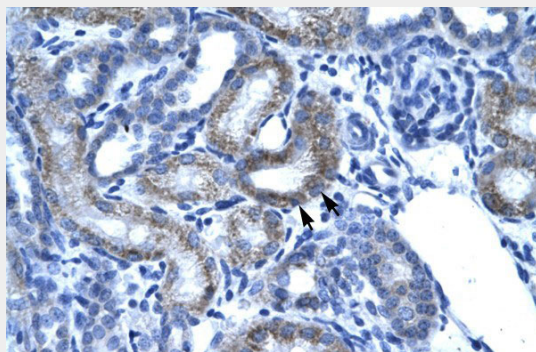
SSBP2 antibody - N-terminal region (AI10031) in Colon, myenteric plexus cells using Immunohistochemistry  
Colon, myenteric plexus



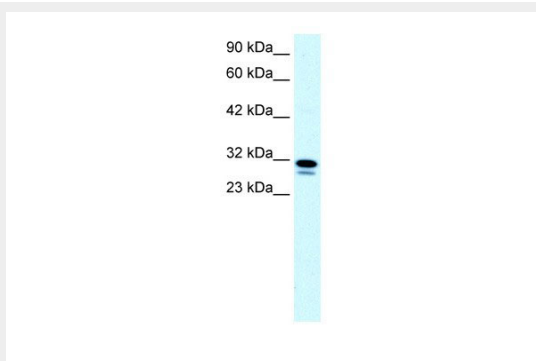
SSBP2 antibody - N-terminal region (AI10031) in breast cells using Immunohistochemistry  
IHC Information: Paraffin embedded breast tissue, tested with an antibody dilution of 5 µg/ml.



SSBP2 antibody - N-terminal region (AI10031) in Human Brain cells using Immunohistochemistry  
Rabbit Anti-SSBP2 Antibody  
Paraffin Embedded Tissue: Human Brain  
Cellular Data: Nerve fibre  
Antibody Concentration: 4.0-8.0 µg/ml  
Magnification: 400X



SSBP2 antibody - N-terminal region (AI10031) in Human kidney cells using Immunohistochemistry  
Rabbit Anti-SSBP2 Antibody  
Paraffin Embedded Tissue: Human Kidney  
Cellular Data: Epithelial cells of renal tubule  
Antibody Concentration: 4.0-8.0 µg/ml  
Magnification: 400X



SSBP2 antibody - N-terminal region (AI10031) in Human Raji cells using Western Blot  
WB Suggested Anti-SSBP2 Antibody Titration: 0.2-1 µg/ml  
ELISA Titer: 1:7812500  
Positive Control: Raji cell lysate

### SSBP2 antibody - N-terminal region - Background

This is a rabbit polyclonal antibody against SSBP2. It was validated on Western Blot and

immunohistochemistry by Abgent. At Abgent we manufacture rabbit polyclonal antibodies on a large scale (200-1000 products/month) of high throughput manner. Our antibodies are peptide based and protein family oriented. We usually provide antibodies covering each member of a whole protein family of your interest. We also use our best efforts to provide you antibodies recognize various epitopes of a target protein. For availability of antibody needed for your experiment, please inquire ([sales@abgent.com](mailto:sales@abgent.com)).