

MYEF2 antibody - N-terminal region
Rabbit Polyclonal Antibody
Catalog # AI10041**Specification**

MYEF2 antibody - N-terminal region - Product Information

Application	WB
Primary Accession	O9P2K5
Other Accession	O9P2K5 , NP_057216 , NM_016132
Reactivity	Human, Mouse, Rat, Rabbit, Dog, Guinea Pig, Horse, Bovine
Predicted	Human, Mouse, Rat, Rabbit, Pig, Dog, Guinea Pig, Horse, Bovine
Host	Rabbit
Clonality	Polyclonal
Calculated MW	64 kDa KDa

MYEF2 antibody - N-terminal region - Additional Information**Gene ID** 50804**Alias Symbol** **FLJ11213, HsT18564, KIAA1341, MEF-2, MGC87325, MST156, MSTP156****Other Names**

Myelin expression factor 2, MEF-2, MyEF-2, MST156, MYEF2, KIAA1341

Target/Specificity

MYEF2 is the transcriptional repressor of the myelin basic protein gene (MBP). MYEF2 binds to the proximal MB1 element 5'-TTGTCC-3' of the MBP promoter. Its binding to MB1 and function are inhibited by PURA.

Format

Liquid. Purified antibody supplied in 1x PBS buffer with 0.09% (w/v) sodium azide and 2% sucrose.

Reconstitution & Storage

Add 50 ul of distilled water. Final anti-MYEF2 antibody concentration is 1 mg/ml in PBS buffer with 2% sucrose. For longer periods of storage, store at -20°C. Avoid repeat freeze-thaw cycles.

Precautions

MYEF2 antibody - N-terminal region is for research use only and not for use in diagnostic or therapeutic procedures.

MYEF2 antibody - N-terminal region - Protein Information**Name** MYEF2**Synonyms** KIAA1341

Function

Transcriptional repressor of the myelin basic protein gene (MBP). Binds to the proximal MB1 element 5'-TTGTCC-3' of the MBP promoter. Its binding to MB1 and function are inhibited by PURA (By similarity).

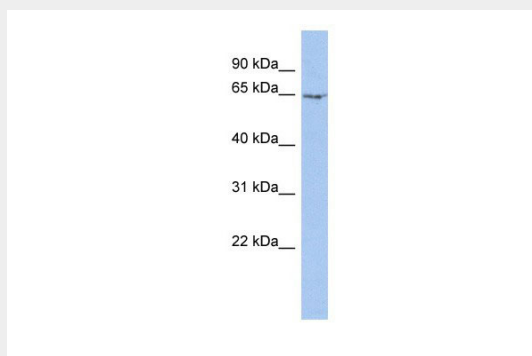
Cellular Location

Nucleus.

MYEF2 antibody - N-terminal region - Protocols

Provided below are standard protocols that you may find useful for product applications.

- [Western Blot](#)
- [Blocking Peptides](#)
- [Dot Blot](#)
- [Immunohistochemistry](#)
- [Immunofluorescence](#)
- [Immunoprecipitation](#)
- [Flow Cytometry](#)
- [Cell Culture](#)

MYEF2 antibody - N-terminal region - Images

MYEF2 antibody - N-terminal region (AI10041) in Human PANC1 cells using Western Blot
WB Suggested Anti-MYEF2 Antibody Titration: 0.2-1 µg/ml
ELISA Titer: 1:12500
Positive Control: PANC1 cell lysate

MYEF2 antibody - N-terminal region - Background

This is a rabbit polyclonal antibody against MYEF2. It was validated on Western Blot using a cell lysate as a positive control. Abgent strives to provide antibodies covering each member of a whole protein family of your interest. We also use our best efforts to provide you antibodies recognize various epitopes of a target protein. For availability of antibody needed for your experiment, please inquire (sales@abgent.com).