

ZNF691 antibody - N-terminal region
Rabbit Polyclonal Antibody
Catalog # AI10042**Specification**

ZNF691 antibody - N-terminal region - Product Information

Application	WB
Primary Accession	Q5VV52
Other Accession	Q5VV52-2 , NP_056995 , NM_015911
Reactivity	Human, Mouse, Rat, Rabbit, Pig, Dog, Horse, Bovine
Predicted Host	Human
Clonality	Rabbit
Calculated MW	Polyclonal 33 kDa KDa

ZNF691 antibody - N-terminal region - Additional Information**Gene ID** 51058

Alias Symbol	Zfp691, RP11-342M1.5
Other Names	
Zinc finger protein 691, ZNF691	

Target/Specificity

ZNF691 may be involved in transcriptional regulation

Format

Liquid. Purified antibody supplied in 1x PBS buffer with 0.09% (w/v) sodium azide and 2% sucrose.

Reconstitution & Storage

Add 100 ul of distilled water. Final anti-ZNF691 antibody concentration is 1 mg/ml in PBS buffer with 2% sucrose. For longer periods of storage, store at -20°C. Avoid repeat freeze-thaw cycles.

Precautions

ZNF691 antibody - N-terminal region is for research use only and not for use in diagnostic or therapeutic procedures.

ZNF691 antibody - N-terminal region - Protein Information**Name** ZNF691**Function**

May be involved in transcriptional regulation.

Cellular Location

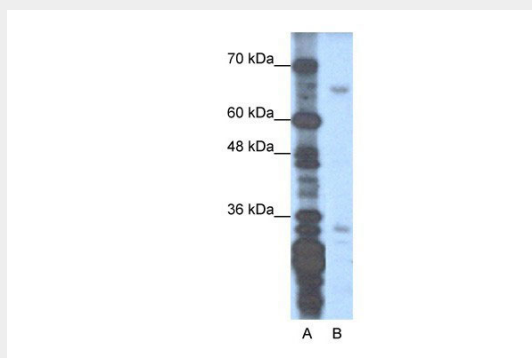
Nucleus.

ZNF691 antibody - N-terminal region - Protocols

Provided below are standard protocols that you may find useful for product applications.

- [Western Blot](#)
- [Blocking Peptides](#)
- [Dot Blot](#)
- [Immunohistochemistry](#)
- [Immunofluorescence](#)
- [Immunoprecipitation](#)
- [Flow Cytometry](#)
- [Cell Culture](#)

ZNF691 antibody - N-terminal region - Images



ZNF691 antibody - N-terminal region (AI10042) in Transfected 293T cells using Western Blot
WB Suggested Anti-ZNF691 Antibody Titration: 1.25µg/ml
Positive Control: Transfected 293T

ZNF691 antibody - N-terminal region - Background

This is a rabbit polyclonal antibody against ZNF691. It was validated on Western Blot using a cell lysate as a positive control. Abgent strives to provide antibodies covering each member of a whole protein family of your interest. We also use our best efforts to provide you antibodies recognize various epitopes of a target protein. For availability of antibody needed for your experiment, please inquire (sales@abgent.com).