

LDB2 antibody - middle region
Rabbit Polyclonal Antibody
Catalog # AI10046**Specification**

LDB2 antibody - middle region - Product Information

Application	WB
Primary Accession	O43679
Other Accession	O43679 , NP_001281 , NM_001290
Reactivity	Human, Mouse, Rat, Rabbit, Dog, Guinea Pig, Horse, Bovine
Predicted	Human, Mouse, Rat, Rabbit, Chicken, Dog, Horse, Bovine
Host	Rabbit
Clonality	Polyclonal
Calculated MW	43 kDa KDa

LDB2 antibody - middle region - Additional Information**Gene ID** 9079**Alias Symbol** CLIM1, LDB1**Other Names**

LIM domain-binding protein 2, LDB-2, Carboxyl-terminal LIM domain-binding protein 1, CLIM-1, LIM domain-binding factor CLIM1, LDB2, CLIM1

Target/Specificity

LDB2 belongs to the LDB family. LDB2 binds to the LIM domain of a wide variety of LIM domain-containing transcription factors. LIM domains are required for both inhibitory effects on LIM homeodomain transcription factors and synergistic transcriptional activation events. The inhibitory actions of the LIM domain can often be overcome by the LIM co-regulators known as CLIM2, LDB2 and NLI. LIM homeoproteins and CLIMs are involved in a variety of developmental processes.

Format

Liquid. Purified antibody supplied in 1x PBS buffer with 0.09% (w/v) sodium azide and 2% sucrose.

Reconstitution & Storage

Add 50 ul of distilled water. Final anti-LDB2 antibody concentration is 1 mg/ml in PBS buffer with 2% sucrose. For longer periods of storage, store at -20°C. Avoid repeat freeze-thaw cycles.

Precautions

LDB2 antibody - middle region is for research use only and not for use in diagnostic or therapeutic procedures.

LDB2 antibody - middle region - Protein Information**Name** LDB2

Synonyms CLIM1**Function**

Transcription cofactor. Binds to the LIM domain of a wide variety of LIM domain-containing transcription factors.

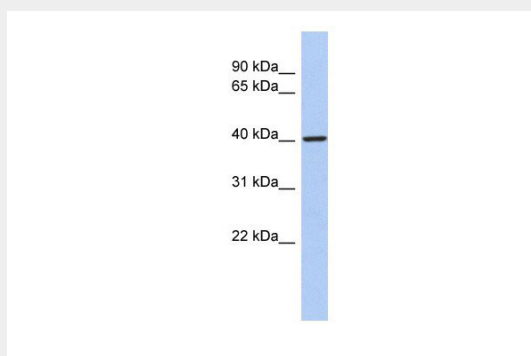
Cellular Location

Nucleus.

LDB2 antibody - middle region - Protocols

Provided below are standard protocols that you may find useful for product applications.

- [Western Blot](#)
- [Blocking Peptides](#)
- [Dot Blot](#)
- [Immunohistochemistry](#)
- [Immunofluorescence](#)
- [Immunoprecipitation](#)
- [Flow Cytometry](#)
- [Cell Culture](#)

LDB2 antibody - middle region - Images

LDB2 antibody - middle region (AI10046) in Human Small Intestine cells using Western Blot
WB Suggested Anti-LDB2 Antibody Titration: 0.2-1 µg/ml

ELISA Titer: 1:312500

Positive Control: Human Small Intestine

LDB2 antibody - middle region - Background

This is a rabbit polyclonal antibody against LDB2. It was validated on Western Blot using a cell lysate as a positive control. Abgent strives to provide antibodies covering each member of a whole protein family of your interest. We also use our best efforts to provide you antibodies recognize various epitopes of a target protein. For availability of antibody needed for your experiment, please inquire (sales@abgent.com).