

**TLE2 antibody - N-terminal region**  
**Rabbit Polyclonal Antibody**  
**Catalog # AI10049****Specification**

---

**TLE2 antibody - N-terminal region - Product Information**

Application	WB
Primary Accession	<a href="#">Q04725</a>
Other Accession	<a href="#">Q04725</a> , <a href="#">NP_003251</a> , <a href="#">NM_003260</a>
Reactivity	Human, Mouse, Rat, Pig, Dog, Guinea Pig, Horse, Bovine
Predicted Host	Human, Mouse, Rat, Dog, Horse, Bovine
Clonality	Rabbit
Calculated MW	Polyclonal 80 kDa KDa

**TLE2 antibody - N-terminal region - Additional Information****Gene ID** 7089**Alias Symbol** ESG, ESG2, FLJ41188, GRG2**Other Names**

Transducin-like enhancer protein 2, Enhancer of split groucho-like protein 2, ESG2, TLE2

**Target/Specificity**

TLE2 belongs to the WD repeat Groucho/TLE family. It contains 6 WD repeats. TLE2 is a transcriptional corepressor that binds to a number of transcription factors. It inhibits the transcriptional activation mediated by CTNNB1 and TCF family members in Wnt signaling. The effects of full-length TLE family members may be modulated by association with dominant-negative AES.

**Format**

Liquid. Purified antibody supplied in 1x PBS buffer with 0.09% (w/v) sodium azide and 2% sucrose.

**Reconstitution & Storage**

Add 50 ul of distilled water. Final anti-TLE2 antibody concentration is 1 mg/ml in PBS buffer with 2% sucrose. For longer periods of storage, store at -20°C. Avoid repeat freeze-thaw cycles.

**Precautions**

TLE2 antibody - N-terminal region is for research use only and not for use in diagnostic or therapeutic procedures.

**TLE2 antibody - N-terminal region - Protein Information****Name** TLE2**Function**

Transcriptional corepressor that binds to a number of transcription factors. Inhibits the

transcriptional activation mediated by CTNNB1 and TCF family members in Wnt signaling. The effects of full-length TLE family members may be modulated by association with dominant-negative AES (By similarity).

**Cellular Location**

Nucleus.

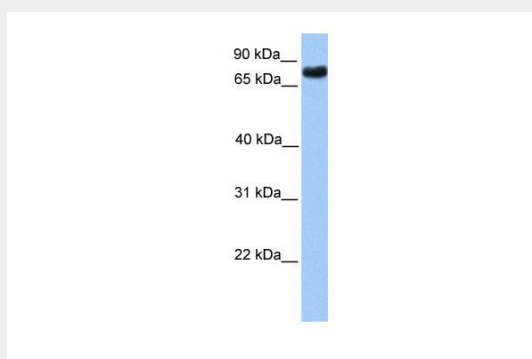
**Tissue Location**

In all tissues examined, mostly in heart, brain, and muscle

**TLE2 antibody - N-terminal region - Protocols**

Provided below are standard protocols that you may find useful for product applications.

- [Western Blot](#)
- [Blocking Peptides](#)
- [Dot Blot](#)
- [Immunohistochemistry](#)
- [Immunofluorescence](#)
- [Immunoprecipitation](#)
- [Flow Cytometry](#)
- [Cell Culture](#)

**TLE2 antibody - N-terminal region - Images**

TLE2 antibody - N-terminal region (AI10049) in Transfected 293T cells using Western Blot

WB Suggested Anti-TLE2 Antibody Titration: 0.2-1 µg/ml

Positive Control: Transfected 293T

**TLE2 antibody - N-terminal region - Background**

This is a rabbit polyclonal antibody against TLE2. It was validated on Western Blot using a cell lysate as a positive control. Abgent strives to provide antibodies covering each member of a whole protein family of your interest. We also use our best efforts to provide you antibodies recognize various epitopes of a target protein. For availability of antibody needed for your experiment, please inquire (sales@abgent.com).