

TLE4 antibody - N-terminal region
Rabbit Polyclonal Antibody
Catalog # AI10056**Specification**

TLE4 antibody - N-terminal region - Product Information

Application	IHC, WB
Primary Accession	Q04727
Other Accession	Q04727 , NP_008936 , NM_007005
Reactivity	Human, Mouse, Rat, Rabbit, Pig, Dog, Guinea Pig, Horse, Bovine
Predicted	Human, Mouse, Rat, Rabbit, Pig, Chicken, Dog, Guinea Pig, Horse, Bovine
Host	Rabbit
Clonality	Polyclonal
Calculated MW	84 kDa KDa

TLE4 antibody - N-terminal region - Additional Information**Gene ID** 7091**Alias Symbol** BCE-1, E(spl), ESG, ESG4, GRG4, BCE1**Other Names**

Transducin-like enhancer protein 4, Grg-4, Groucho-related protein 4, TLE4, GRG4, KIAA1261

Target/Specificity

TLE4 is the transcriptional corepressor that binds to a number of transcription factors. It inhibits the transcriptional activation mediated by PAX5, and by CTNNB1 and TCF family members in Wnt signaling. The effects of full-length TLE family members may be modulated by association with dominant-negative AES.

Format

Liquid. Purified antibody supplied in 1x PBS buffer with 0.09% (w/v) sodium azide and 2% sucrose.

Reconstitution & Storage

Add 50 ul of distilled water. Final anti-TLE4 antibody concentration is 1 mg/ml in PBS buffer with 2% sucrose. For longer periods of storage, store at -20°C. Avoid repeat freeze-thaw cycles.

Precautions

TLE4 antibody - N-terminal region is for research use only and not for use in diagnostic or therapeutic procedures.

TLE4 antibody - N-terminal region - Protein Information**Name** TLE4**Synonyms** GRG4, KIAA1261

Function

Transcriptional corepressor that binds to a number of transcription factors. Inhibits the transcriptional activation mediated by PAX5, and by CTNNB1 and TCF family members in Wnt signaling. The effects of full-length TLE family members may be modulated by association with dominant-negative AES. Essential for the transcriptional repressor activity of SIX3 during retina and lens development and for SIX3 transcriptional auto-repression (By similarity). Involved in transcriptional repression of GNRHR and enhances MSX1-mediated transcriptional repression of CGA/alpha-GSU (By similarity).

Cellular Location

Nucleus.

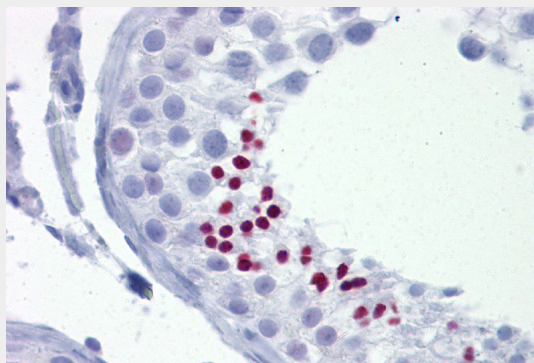
Tissue Location

In all tissues examined, mostly in brain, and muscle

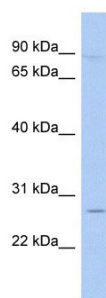
TLE4 antibody - N-terminal region - Protocols

Provided below are standard protocols that you may find useful for product applications.

- [Western Blot](#)
- [Blocking Peptides](#)
- [Dot Blot](#)
- [Immunohistochemistry](#)
- [Immunofluorescence](#)
- [Immunoprecipitation](#)
- [Flow Cytometry](#)
- [Cell Culture](#)

TLE4 antibody - N-terminal region - Images

TLE4 antibody - N-terminal region (AI10056) in Human Testis cells using Immunohistochemistry
Testis



TLE4 antibody - N-terminal region (AI10056) in Human THP-1 cells using Western Blot
WB Suggested Anti-TLE4 Antibody Titration: 0.2-1 μ g/ml
ELISA Titer: 1:62500
Positive Control: THP-1 cell lysate

TLE4 antibody - N-terminal region - Background

This is a rabbit polyclonal antibody against TLE4. It was validated on Western Blot using a cell lysate as a positive control. Abgent strives to provide antibodies covering each member of a whole protein family of your interest. We also use our best efforts to provide you antibodies recognize various epitopes of a target protein. For availability of antibody needed for your experiment, please inquire (sales@abgent.com).