

PSMD6 antibody - N-terminal region
Rabbit Polyclonal Antibody
Catalog # AI10057**Specification**

PSMD6 antibody - N-terminal region - Product Information

Application	WB
Primary Accession	Q15008
Other Accession	Q15008 , NP_055629 , NM_014814
Reactivity	Human, Mouse, Rat, Rabbit, Zebrafish, Pig, Dog, Guinea Pig, Horse, Bovine
Predicted	Human, Mouse, Rat, Rabbit, Zebrafish, Pig, Chicken, Dog, Horse, Bovine
Host	Rabbit
Clonality	Polyclonal
Calculated MW	45 kDa KDa

PSMD6 antibody - N-terminal region - Additional Information**Gene ID** 9861**Alias Symbol** KIAA0107, S10, SGA-113M, p44S10, Rpn7**Other Names**

26S proteasome non-ATPase regulatory subunit 6, 26S proteasome regulatory subunit RPN7, 26S proteasome regulatory subunit S10, Breast cancer-associated protein SGA-113M, Phosphonoformate immuno-associated protein 4, Proteasome regulatory particle subunit p44S10, p42A, PSMD6, KIAA0107, PFAAP4

Target/Specificity

PSMD6 acts as a regulatory subunit of the 26S proteasome which is involved in the ATP-dependent degradation of ubiquitinated proteins.

Format

Liquid. Purified antibody supplied in 1x PBS buffer with 0.09% (w/v) sodium azide and 2% sucrose.

Reconstitution & Storage

Add 100 ul of distilled water. Final anti-PSMD6 antibody concentration is 1 mg/ml in PBS buffer with 2% sucrose. For longer periods of storage, store at -20°C. Avoid repeat freeze-thaw cycles.

Precautions

PSMD6 antibody - N-terminal region is for research use only and not for use in diagnostic or therapeutic procedures.

PSMD6 antibody - N-terminal region - Protein Information**Name** PSMD6**Synonyms** KIAA0107, PFAAP4

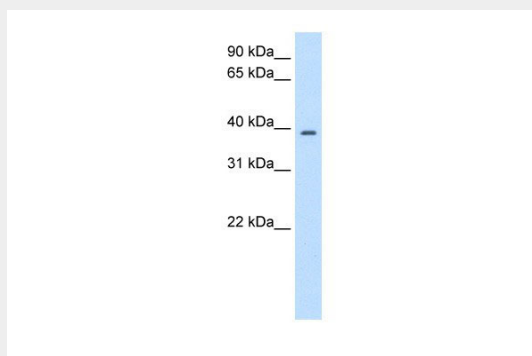
Function

Component of the 26S proteasome, a multiprotein complex involved in the ATP-dependent degradation of ubiquitinated proteins. This complex plays a key role in the maintenance of protein homeostasis by removing misfolded or damaged proteins, which could impair cellular functions, and by removing proteins whose functions are no longer required. Therefore, the proteasome participates in numerous cellular processes, including cell cycle progression, apoptosis, or DNA damage repair.

PSMD6 antibody - N-terminal region - Protocols

Provided below are standard protocols that you may find useful for product applications.

- [Western Blot](#)
- [Blocking Peptides](#)
- [Dot Blot](#)
- [Immunohistochemistry](#)
- [Immunofluorescence](#)
- [Immunoprecipitation](#)
- [Flow Cytometry](#)
- [Cell Culture](#)

PSMD6 antibody - N-terminal region - Images

PSMD6 antibody - N-terminal region (AI10057) in Transfected 293T cells using Western Blot
WB Suggested Anti-PSMD6 Antibody Titration: 2.5µg/ml
Positive Control: Transfected 293T

PSMD6 antibody - N-terminal region - Background

This is a rabbit polyclonal antibody against PSMD6. It was validated on Western Blot using a cell lysate as a positive control. Abgent strives to provide antibodies covering each member of a whole protein family of your interest. We also use our best efforts to provide you antibodies recognize various epitopes of a target protein. For availability of antibody needed for your experiment, please inquire (sales@abgent.com).