

LBX1 antibody - middle region
Rabbit Polyclonal Antibody
Catalog # AI10071**Specification**

LBX1 antibody - middle region - Product Information

Application	WB
Primary Accession	P52954
Other Accession	P52954 , NP_006553 , NM_006562
Reactivity	Human, Mouse, Rat, Rabbit, Zebrafish, Pig, Dog, Guinea Pig, Horse, Bovine
Predicted	Human, Mouse, Rat, Rabbit, Zebrafish, Pig, Chicken, Dog, Guinea Pig, Bovine
Host	Rabbit
Clonality	Polyclonal
Calculated MW	30 kDa KDa

LBX1 antibody - middle region - Additional Information**Gene ID** 10660**Alias Symbol** HPX-6, HPX6, LBX1H, homeobox**Other Names**

Transcription factor LBX1, Ladybird homeobox protein homolog 1, LBX1, LBX1H

Target/Specificity

LBX1 is the transcription factor required for the development of GABAergic interneurons in the dorsal horn of the spinal cord and migration and further development of hypaxial muscle precursor cells for limb muscles, diaphragm and hypoglossal cord. This gene and the orthologous mouse gene were found by their homology to the Drosophila lady bird early and late homeobox genes. In the mouse, this gene is a key regulator of muscle precursor cell migration and is required for the acquisition of dorsal identities of forelimb muscles.

Format

Liquid. Purified antibody supplied in 1x PBS buffer with 0.09% (w/v) sodium azide and 2% sucrose.

Reconstitution & Storage

Add 50 ul of distilled water. Final anti-LBX1 antibody concentration is 1 mg/ml in PBS buffer with 2% sucrose. For longer periods of storage, store at -20°C. Avoid repeat freeze-thaw cycles.

Precautions

LBX1 antibody - middle region is for research use only and not for use in diagnostic or therapeutic procedures.

LBX1 antibody - middle region - Protein Information**Name** LBX1

Synonyms LBX1H**Function**

Transcription factor required for the development of GABAergic interneurons in the dorsal horn of the spinal cord and migration and further development of hypaxial muscle precursor cells for limb muscles, diaphragm and hypoglossal cord.

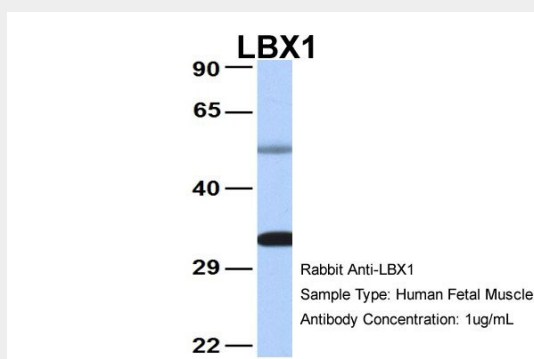
Cellular Location

Nucleus.

LBX1 antibody - middle region - Protocols

Provided below are standard protocols that you may find useful for product applications.

- [Western Blot](#)
- [Blocking Peptides](#)
- [Dot Blot](#)
- [Immunohistochemistry](#)
- [Immunofluorescence](#)
- [Immunoprecipitation](#)
- [Flow Cytometry](#)
- [Cell Culture](#)

LBX1 antibody - middle region - Images

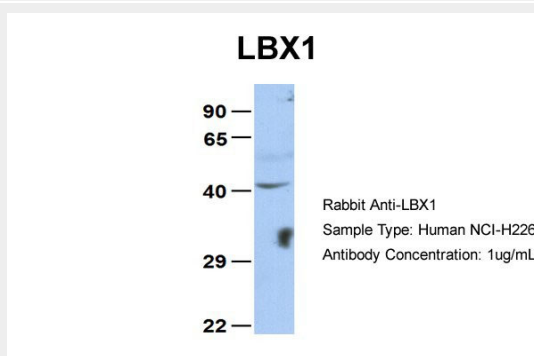
LBX1 antibody - middle region (A110071) in Hum. Fetal Muscle cells using Western Blot

Host: Rabbit

Target Name: LBX1

Sample Tissue: Human Fetal Muscle

Antibody Dilution: 1.0µg/ml



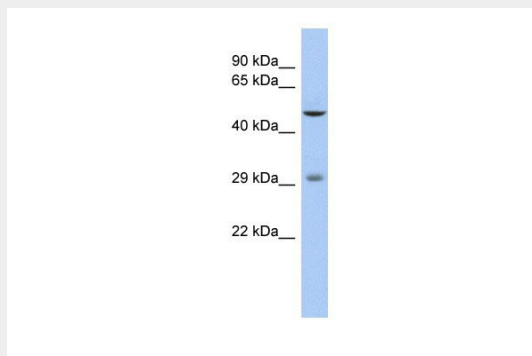
LBX1 antibody - middle region (AI10071) in Human NCI-H226 cells using Western Blot

Host: Rabbit

Target Name: LBX1

Sample Tissue: NCI-H226

Antibody Dilution: 1.0µg/mL LBX1 is supported by BioGPS gene expression data to be expressed in NCIH226



LBX1 antibody - middle region (AI10071) in Human Thymus cells using Western Blot

WB Suggested Anti-LBX1 Antibody Titration: 0.2-1 µg/ml

ELISA Titer: 1:1562500

Positive Control: Human Thymus

LBX1 antibody - middle region - Background

This is a rabbit polyclonal antibody against LBX1. It was validated on Western Blot using a cell lysate as a positive control. Abgent strives to provide antibodies covering each member of a whole protein family of your interest. We also use our best efforts to provide you antibodies recognize various epitopes of a target protein. For availability of antibody needed for your experiment, please inquire (sales@abgent.com).