

**BRD3 Antibody - middle region**  
**Rabbit Polyclonal Antibody**  
**Catalog # AI10087****Specification**

---

**BRD3 Antibody - middle region - Product Information**

Application	WB
Primary Accession	<a href="#">Q15059</a>
Other Accession	<a href="#">Q15059-2</a>
Reactivity	Human
Predicted	Human, Mouse, Rat, Rabbit, Zebrafish, Pig, Dog, Guinea Pig, Horse, Bovine
Host	Rabbit
Clonality	Polyclonal
Calculated MW	61 kDa KDa

**BRD3 Antibody - middle region - Additional Information****Gene ID** 8019**Other Names**

Bromodomain-containing protein 3, RING3-like protein, BRD3, KIAA0043, RING3L

**Target/Specificity**

This gene was identified based on its homology to the gene encoding the RING3 protein, a serine/threonine kinase. The gene localizes to 9q34, a region which contains several major histocompatibility complex (MHC) genes. The function of the encoded protein is not known.

**Format**

Liquid. Purified antibody supplied in 1x PBS buffer with 0.09% (w/v) sodium azide and 2% sucrose.

**Reconstitution & Storage**

Add 50 ul, l of distilled water. Final Anti-BRD3 antibody concentration is 1 mg/ml in PBS buffer with 2% sucrose. For longer periods of storage, store at -20°C. Avoid repeat freeze-thaw cycles.

**Precautions**

BRD3 Antibody - middle region is for research use only and not for use in diagnostic or therapeutic procedures.

**BRD3 Antibody - middle region - Protein Information****Name** BRD3 {ECO:0000303|PubMed:18406326, ECO:0000312|HGNC:HGNC:1104}**Function**

Chromatin reader that recognizes and binds acetylated histones, thereby controlling gene expression and remodeling chromatin structures (PubMed:<a href="http://www.uniprot.org/citations/18406326" target="\_blank">18406326</a>, PubMed:<a href="http://www.uniprot.org/citations/32895492" target="\_blank">32895492</a>, PubMed:<a href="http://www.uniprot.org/citations/32895492" target="\_blank">32895492</a>, PubMed:<a href="http://www.uniprot.org/citations/32895492" target="\_blank">32895492</a>).

[22464331](http://www.uniprot.org/citations/22464331), PubMed: [27105114](http://www.uniprot.org/citations/27105114)). Recruits transcription factors and coactivators to target gene sites, and activates RNA polymerase II machinery for transcriptional elongation (PubMed: [32895492](http://www.uniprot.org/citations/32895492), PubMed: [29567837](http://www.uniprot.org/citations/29567837)). In vitro, binds acetylated lysine residues on the N-terminus of histone H2A, H2B, H3 and H4 (PubMed: [18406326](http://www.uniprot.org/citations/18406326)). Involved in endoderm differentiation via its association with long non-coding RNA (lncRNA) DIGIT: BRD3 undergoes liquid-liquid phase separation upon binding to lncRNA DIGIT, promoting binding to histone H3 acetylated at 'Lys-18' (H3K18ac) to induce endoderm gene expression (PubMed: [32895492](http://www.uniprot.org/citations/32895492)). Also binds non-histones acetylated proteins, such as GATA1 and GATA2: regulates transcription by promoting the binding of the transcription factor GATA1 to its targets (By similarity).

#### Cellular Location

Nucleus. Chromosome. Note=Detected on chromatin

#### Tissue Location

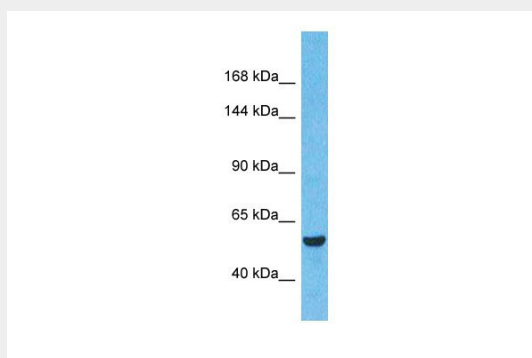
Ubiquitous..

### BRD3 Antibody - middle region - Protocols

Provided below are standard protocols that you may find useful for product applications.

- [Western Blot](#)
- [Blocking Peptides](#)
- [Dot Blot](#)
- [Immunohistochemistry](#)
- [Immunofluorescence](#)
- [Immunoprecipitation](#)
- [Flow Cytometry](#)
- [Cell Culture](#)

### BRD3 Antibody - middle region - Images



BRD3 Antibody - middle region (AI10087) in Human Liver tumor cells using Western Blot  
Host: Rabbit  
Target Name: BRD3  
Sample Tissue: Liver tumor lysates  
Antibody Dilution: 1.0µg/ml

### BRD3 Antibody - middle region - Background

This is a rabbit polyclonal antibody against BRD3. It was validated on Western Blot by Abgent. At Abgent we manufacture rabbit polyclonal antibodies on a large scale (200-1000 products/month) of high throughput manner. Our antibodies are peptide based and protein family oriented. We usually provide antibodies covering each member of a whole protein family of your interest. We also use our best efforts to provide you antibodies recognize various epitopes of a target protein. For availability of antibody needed for your experiment, please inquire ([sales@abgent.com](mailto:sales@abgent.com)).