

**HSPBAP1 antibody - middle region**  
**Rabbit Polyclonal Antibody**  
**Catalog # AI10096****Specification**

---

**HSPBAP1 antibody - middle region - Product Information**

Application	WB
Primary Accession	<a href="#">O96EW2</a>
Other Accession	<a href="#">O96EW2</a> , <a href="#">NP_078886</a> , <a href="#">NM_024610</a>
Reactivity	Human, Mouse, Rat, Rabbit, Zebrafish, Pig, Dog, Guinea Pig, Horse, Bovine
Predicted	Human, Rat, Rabbit, Pig, Chicken, Dog, Horse
Host	Rabbit
Clonality	Polyclonal
Calculated MW	55 kDa KDa

**HSPBAP1 antibody - middle region - Additional Information****Gene ID** 79663**Alias Symbol** **FLJ22623, FLJ39386, PASS1****Other Names**

HSPB1-associated protein 1, 27 kDa heat shock protein-associated protein 1, Protein associated with small stress protein 1, HSPBAP1, PASS1

**Target/Specificity**

HSPBAP1 may play a role in cellular stress response.

**Format**

Liquid. Purified antibody supplied in 1x PBS buffer with 0.09% (w/v) sodium azide and 2% sucrose.

**Reconstitution & Storage**

Add 50 ul of distilled water. Final anti-HSPBAP1 antibody concentration is 1 mg/ml in PBS buffer with 2% sucrose. For longer periods of storage, store at -20°C. Avoid repeat freeze-thaw cycles.

**Precautions**

HSPBAP1 antibody - middle region is for research use only and not for use in diagnostic or therapeutic procedures.

**HSPBAP1 antibody - middle region - Protein Information****Name** HSPBAP1**Synonyms** PASS1**Function**

May play a role in cellular stress response.

**Cellular Location**

Cytoplasm.

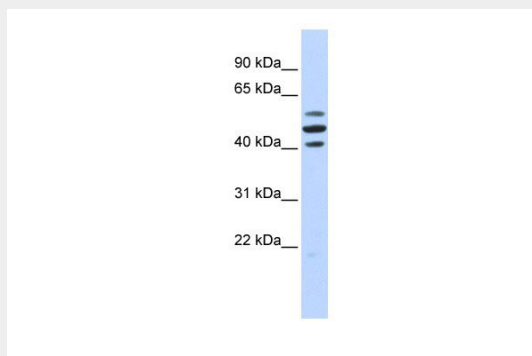
**Tissue Location**

Widely expressed..

**HSPBAP1 antibody - middle region - Protocols**

Provided below are standard protocols that you may find useful for product applications.

- [Western Blot](#)
- [Blocking Peptides](#)
- [Dot Blot](#)
- [Immunohistochemistry](#)
- [Immunofluorescence](#)
- [Immunoprecipitation](#)
- [Flow Cytometry](#)
- [Cell Culture](#)

**HSPBAP1 antibody - middle region - Images**

HSPBAP1 antibody - middle region (AI10096) in Human Brain cells using Western Blot

WB Suggested Anti-HSPBAP1 Antibody Titration: 0.2-1 µg/ml

ELISA Titer: 1:312500

Positive Control: Human brain

**HSPBAP1 antibody - middle region - Background**

This is a rabbit polyclonal antibody against HSPBAP1. It was validated on Western Blot using a cell lysate as a positive control. Abgent strives to provide antibodies covering each member of a whole protein family of your interest. We also use our best efforts to provide you antibodies recognize various epitopes of a target protein. For availability of antibody needed for your experiment, please inquire (sales@abgent.com).