

CLDN4 Antibody - C-terminal region
Rabbit Polyclonal Antibody
Catalog # AI10097**Specification**

CLDN4 Antibody - C-terminal region - Product Information

Application	WB
Primary Accession	O14493
Other Accession	O14493 , NP_001296 , NM_001305
Reactivity	Human, Mouse, Rat, Rabbit, Pig, Dog, Guinea Pig, Horse, Sheep, Bovine
Predicted	Human, Mouse, Rat, Rabbit, Pig, Dog, Guinea Pig, Horse, Sheep, Bovine
Host	Rabbit
Clonality	Polyclonal
Calculated MW	22 kDa KDa

CLDN4 Antibody - C-terminal region - Additional Information**Gene ID** 1364**Alias Symbol** CPE-R, CPER, CPETR, CPETR1, WBSCR8, hCPE-R**Other Names**

Claudin-4, Clostridium perfringens enterotoxin receptor, CPE-R, CPE-receptor, Williams-Beuren syndrome chromosomal region 8 protein, CLDN4, CPER, CPETR1, WBSCR8

Target/Specificity

This gene encodes an integral membrane protein, which belongs to the claudin family. The protein is a component of tight junction strands and may play a role in internal organ development and function during pre- and postnatal life. This gene is deleted in Williams-Beuren syndrome, a neurodevelopmental disorder affecting multiple systems.

Format

Liquid. Purified antibody supplied in 1x PBS buffer with 0.09% (w/v) sodium azide and 2% sucrose.

Reconstitution & Storage

Add 50 ul of distilled water. Final anti-CLDN4 antibody concentration is 1 mg/ml in PBS buffer with 2% sucrose. For longer periods of storage, store at -20°C. Avoid repeat freeze-thaw cycles.

Precautions

CLDN4 Antibody - C-terminal region is for research use only and not for use in diagnostic or therapeutic procedures.

CLDN4 Antibody - C-terminal region - Protein Information**Name** CLDN4

Function

Channel-forming tight junction protein that mediates paracellular chloride transport in the kidney. Plays a critical role in the paracellular reabsorption of filtered chloride in the kidney collecting ducts. Claudins play a major role in tight junction-specific obliteration of the intercellular space, through calcium-independent cell-adhesion activity.

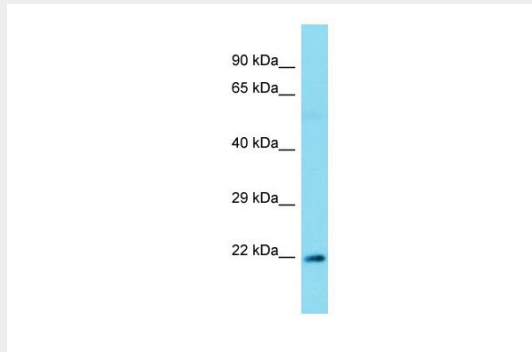
Cellular Location

Cell junction, tight junction {ECO:0000250|UniProtKB:O35054}. Cell membrane; Multi-pass membrane protein. Note=CLDN4 is required for tight junction localization in the kidney. {ECO:0000250|UniProtKB:O35054}

CLDN4 Antibody - C-terminal region - Protocols

Provided below are standard protocols that you may find useful for product applications.

- [Western Blot](#)
- [Blocking Peptides](#)
- [Dot Blot](#)
- [Immunohistochemistry](#)
- [Immunofluorescence](#)
- [Immunoprecipitation](#)
- [Flow Cytometry](#)
- [Cell Culture](#)

CLDN4 Antibody - C-terminal region - Images

CLDN4 Antibody - C-terminal region (AI10097) in Human large intestine Tumor cells using Western Blot

Host: Rabbit

Target Name: CLDN4

Sample Tissue: large intestine Tumor lysates

Antibody Dilution: 1.0µg/ml

CLDN4 Antibody - C-terminal region - Background

This is a rabbit polyclonal antibody against CLDN4. It was validated on Western Blot by Abgent. At Abgent we manufacture rabbit polyclonal antibodies on a large scale (200-1000 products/month) of high throughput manner. Our antibodies are peptide based and protein family oriented. We usually provide antibodies covering each member of a whole protein family of your interest. We also use our best efforts to provide you antibodies recognize various epitopes of a target protein. For availability of antibody needed for your experiment, please inquire (sales@abgent.com).