

**USE1 antibody - middle region**  
**Rabbit Polyclonal Antibody**  
**Catalog # AI10112****Specification**

---

**USE1 antibody - middle region - Product Information**

Application	IHC, WB
Primary Accession	<a href="#">O9NZ43</a>
Other Accession	<a href="#">O9NZ43</a> , <a href="#">NP_060937</a> , <a href="#">NM_018467</a>
Reactivity	Human, Mouse, Rat, Zebrafish, Dog, Guinea Pig, Horse, Bovine
Predicted	Human, Mouse, Rat, Zebrafish, Pig, Chicken, Dog, Guinea Pig, Bovine
Host	Rabbit
Clonality	Polyclonal
Calculated MW	29 kDa KDa

**USE1 antibody - middle region - Additional Information****Gene ID** 55850**Alias Symbol** MDS032, SLT1, p31, P31**Other Names**

Vesicle transport protein USE1, Putative MAPK-activating protein PM26, USE1-like protein, p31, USE1, USE1L

**Target/Specificity**

MDS032 belongs to the USE1 family and is a component of a SNARE complex which may be involved in targeting and fusion of Golgi-derived retrograde transport vesicles with the ER.

**Format**

Liquid. Purified antibody supplied in 1x PBS buffer with 0.09% (w/v) sodium azide and 2% sucrose.

**Reconstitution & Storage**

Add 50 ul of distilled water. Final anti-USE1 antibody concentration is 1 mg/ml in PBS buffer with 2% sucrose. For longer periods of storage, store at -20°C. Avoid repeat freeze-thaw cycles.

**Precautions**

USE1 antibody - middle region is for research use only and not for use in diagnostic or therapeutic procedures.

**USE1 antibody - middle region - Protein Information****Name** USE1**Synonyms** USE1L**Function**

SNARE that may be involved in targeting and fusion of Golgi- derived retrograde transport vesicles with the ER.

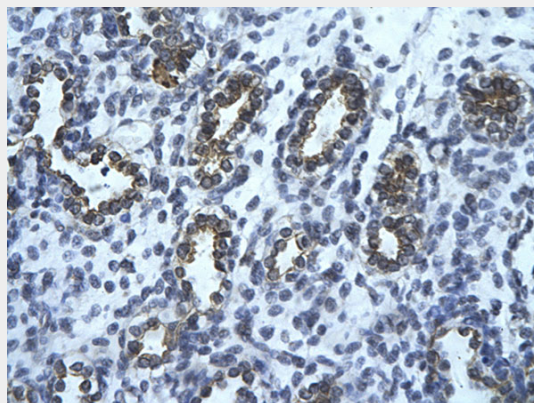
**Cellular Location**

Endoplasmic reticulum membrane; Single-pass type IV membrane protein

**USE1 antibody - middle region - Protocols**

Provided below are standard protocols that you may find useful for product applications.

- [Western Blot](#)
- [Blocking Peptides](#)
- [Dot Blot](#)
- [Immunohistochemistry](#)
- [Immunofluorescence](#)
- [Immunoprecipitation](#)
- [Flow Cytometry](#)
- [Cell Culture](#)

**USE1 antibody - middle region - Images**

Human Lung

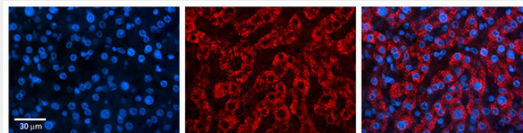
Rabbit Anti-USE1 Antibody

Paraffin Embedded Tissue: Human alveolar cell

Cellular Data: Epithelial cells of renal tubule

Antibody Concentration: 4.0-8.0 µg/ml

Magnification: 400X



USE1 antibody - middle region (AI10112) in Human Liver Tissue cells using Immunohistochemistry

USE1 antibody - middle region (AI10112)

Catalog Number: AI10112

Formalin Fixed Paraffin Embedded Tissue: Human Liver Tissue

Observed Staining: Cytoplasm in hepatocytes

Primary Antibody

Concentration: 1:100

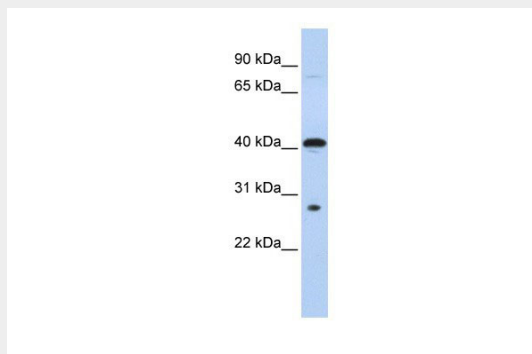
Secondary Antibody: Donkey anti-Rabbit-Cy3

Secondary Antibody

Concentration: 1:200

Magnification: 20X

Exposure Time: 0.5 - 2.0 sec



USE1 antibody - middle region (AI10112) in Human 721\_B cells using Western Blot

WB Suggested Anti-USE1 Antibody Titration: 0.2-1  $\mu$ g/ml

ELISA Titer: 1:62500

Positive Control: 721\_B cell lysate

USE1 is supported by BioGPS gene expression data to be expressed in 721\_B

#### **USE1 antibody - middle region - Background**

This is a rabbit polyclonal antibody against USE1. It was validated on Western Blot using a cell lysate as a positive control. Abgent strives to provide antibodies covering each member of a whole protein family of your interest. We also use our best efforts to provide you antibodies recognize various epitopes of a target protein. For availability of antibody needed for your experiment, please inquire ([sales@abgent.com](mailto:sales@abgent.com)).