

**ENC1 antibody - N-terminal region**  
**Rabbit Polyclonal Antibody**  
**Catalog # AI10115****Specification**

---

**ENC1 antibody - N-terminal region - Product Information**

Application	WB
Primary Accession	<a href="#">O14682</a>
Other Accession	<a href="#">O14682</a> , <a href="#">NP_003624</a> , <a href="#">NM_003633</a>
Reactivity	Human, Mouse, Rat, Rabbit, Zebrafish, Pig, Dog, Guinea Pig, Horse, Bovine
Predicted	Human, Mouse, Rat, Rabbit, Zebrafish, Pig, Chicken, Dog, Horse, Bovine
Host	Rabbit
Clonality	Polyclonal
Calculated MW	66 kDa KDa

**ENC1 antibody - N-terminal region - Additional Information****Gene ID** 8507**Alias Symbol** CCL28, ENC-1, FLJ39259, KLHL35, NRPB, PIG10, TP53I10, KLHL37**Other Names**

Ectoderm-neural cortex protein 1, ENC-1, Kelch-like protein 37, Nuclear matrix protein NRP/B, p53-induced gene 10 protein, ENC1, KLHL37, NRPB, PIG10

**Target/Specificity**

ENC1 encodes an actin-binding protein, which is involved in the regulation of neuronal process formation and in differentiation of neural crest cells. May be down-regulated in neuroblastoma tumors. Substrate-specific adapter of an E3 ubiquitin-protein ligase

**Format**

Liquid. Purified antibody supplied in 1x PBS buffer with 0.09% (w/v) sodium azide and 2% sucrose.

**Reconstitution & Storage**

Add 50 ul of distilled water. Final anti-ENC1 antibody concentration is 1 mg/ml in PBS buffer with 2% sucrose. For longer periods of storage, store at -20°C. Avoid repeat freeze-thaw cycles.

**Precautions**

ENC1 antibody - N-terminal region is for research use only and not for use in diagnostic or therapeutic procedures.

**ENC1 antibody - N-terminal region - Protein Information****Name** ENC1**Synonyms** KLHL37, NRPB, PIG10

**Function**

Actin-binding protein involved in the regulation of neuronal process formation and in differentiation of neural crest cells. Down- regulates transcription factor NF2L2/NRF2 by decreasing the rate of protein synthesis and not via a ubiquitin-mediated proteasomal degradation mechanism.

**Cellular Location**

Nucleus matrix. Cytoplasm. Cytoplasm, cytoskeleton

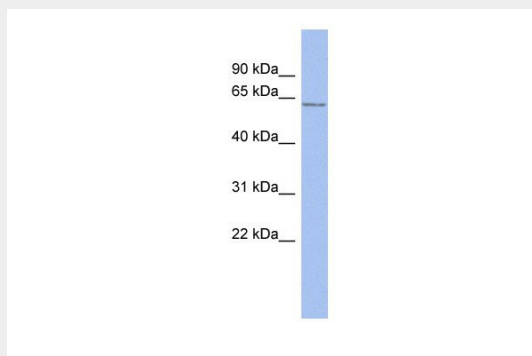
**Tissue Location**

Detected in fetal brain tissue, moderate expression in fetal heart, lung and kidney. Highly expressed in adult brain, particularly high in the hippocampus and amygdala, and spinal chord Detectable in adult pancreas. May be down-regulated in neuroblastoma tumors

**ENC1 antibody - N-terminal region - Protocols**

Provided below are standard protocols that you may find useful for product applications.

- [Western Blot](#)
- [Blocking Peptides](#)
- [Dot Blot](#)
- [Immunohistochemistry](#)
- [Immunofluorescence](#)
- [Immunoprecipitation](#)
- [Flow Cytometry](#)
- [Cell Culture](#)

**ENC1 antibody - N-terminal region - Images**

ENC1 antibody - N-terminal region (AI10115) in Human ACHN cells using Western Blot  
WB Suggested Anti-ENC1 Antibody Titration: 0.2-1 µg/ml  
ELISA Titer: 1:12500  
Positive Control: ACHN cell lysate

**ENC1 antibody - N-terminal region - Background**

This is a rabbit polyclonal antibody against ENC1. It was validated on Western Blot using a cell lysate as a positive control. Abgent strives to provide antibodies covering each member of a whole protein family of your interest. We also use our best efforts to provide you antibodies recognize various epitopes of a target protein. For availability of antibody needed for your experiment, please inquire (sales@abgent.com).