

CRSP6 antibody - N-terminal region
Rabbit Polyclonal Antibody
Catalog # AI10116**Specification**

CRSP6 antibody - N-terminal region - Product Information

Application	IHC, CHIP, WB
Primary Accession	O9NVC6
Other Accession	O9NVC6 , NP_004259 , NM_004268
Reactivity	Human, Mouse, Rat, Rabbit, Pig, Dog, Guinea Pig, Horse, Bovine
Predicted Host	Human, Mouse, Rat, Chicken, Dog, Bovine
Clonality	Rabbit
Calculated MW	Polyclonal 73 kDa kDa

CRSP6 antibody - N-terminal region - Additional Information**Gene ID** 9440**Alias Symbol** **CRSP6, CRSP77, DRIP80, TRAP80**
Other Names

Mediator of RNA polymerase II transcription subunit 17, Activator-recruited cofactor 77 kDa component, ARC77, Cofactor required for Sp1 transcriptional activation subunit 6, CRSP complex subunit 6, Mediator complex subunit 17, Thyroid hormone receptor-associated protein complex 80 kDa component, Trap80, Transcriptional coactivator CRSP77, Vitamin D3 receptor-interacting protein complex 80 kDa component, DRIP80, MED17, ARC77, CRSP6, DRIP77, DRIP80, TRAP80

Target/Specificity

The activation of gene transcription is a multistep process that is triggered by factors that recognize transcriptional enhancer sites in DNA. These factors work with co-activators to direct transcriptional initiation by the RNA polymerase II apparatus. The protein encoded by CRSP6 is a subunit of the CRSP (cofactor required for SP1 activation) complex, which, along with TFIID, is required for efficient activation by SP1. This protein is also a component of other multisubunit complexes e.g. thyroid hormone receptor-(TR-) associated proteins which interact with TR and facilitate TR function on DNA templates in conjunction with initiation factors and cofactors.

Format

Liquid. Purified antibody supplied in 1x PBS buffer with 0.09% (w/v) sodium azide and 2% sucrose.

Reconstitution & Storage

Add 50 ul of distilled water. Final anti-CRSP6 antibody concentration is 1 mg/ml in PBS buffer with 2% sucrose. For longer periods of storage, store at -20°C. Avoid repeat freeze-thaw cycles.

Precautions

CRSP6 antibody - N-terminal region is for research use only and not for use in diagnostic or therapeutic procedures.

CRSP6 antibody - N-terminal region - Protein Information

Name MED17

Synonyms ARC77, CRSP6, DRIP77, DRIP80, TRAP80

Function

Component of the Mediator complex, a coactivator involved in the regulated transcription of nearly all RNA polymerase II-dependent genes. Mediator functions as a bridge to convey information from gene-specific regulatory proteins to the basal RNA polymerase II transcription machinery. Mediator is recruited to promoters by direct interactions with regulatory proteins and serves as a scaffold for the assembly of a functional preinitiation complex with RNA polymerase II and the general transcription factors.

Cellular Location

Nucleus.

Tissue Location

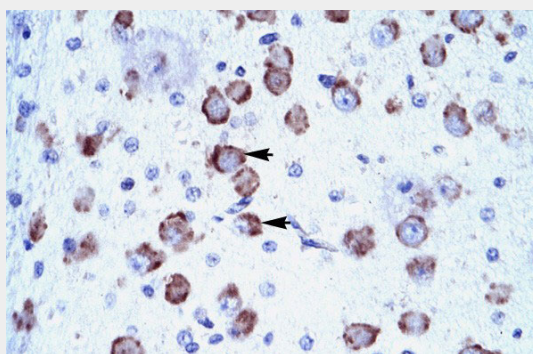
Ubiquitous..

CRSP6 antibody - N-terminal region - Protocols

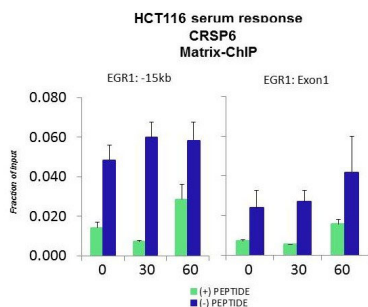
Provided below are standard protocols that you may find useful for product applications.

- [Western Blot](#)
- [Blocking Peptides](#)
- [Dot Blot](#)
- [Immunohistochemistry](#)
- [Immunofluorescence](#)
- [Immunoprecipitation](#)
- [Flow Cytometry](#)
- [Cell Culture](#)

CRSP6 antibody - N-terminal region - Images

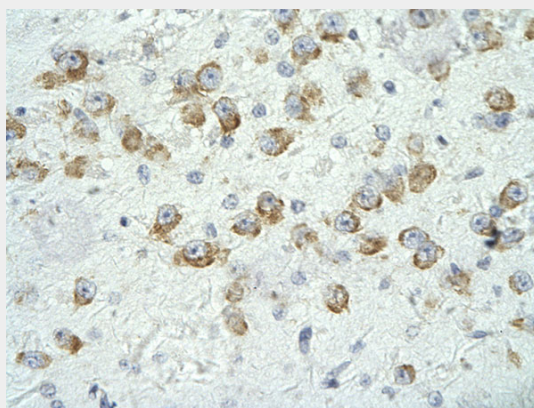


CRSP6 antibody - N-terminal region (AI10116) in Human Brain cells using Immunohistochemistry
Human Brain



CRSP6 antibody - N-terminal region (AI10116) in HCT116 using CHIP

Quiescent human colon carcinoma HCT116 cultures were treated with 10% FBS for three time points (0, 15, 30min) or (0, 30, 60min) were used in Matrix-ChIP and real-time PCR assays at EGR1 gene (Exon1) and 15kb upstream site.



Human Brain

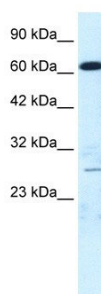
Rabbit Anti-MED17 Antibody

Paraffin Embedded Tissue: Human neural cell

Cellular Data: Epithelial cells of renal tubule

Antibody Concentration: 4.0-8.0 µg/ml

Magnification: 400X



CRSP6 antibody - N-terminal region (AI10116) in Human HepG2 cells using Western Blot

WB Suggested Anti-CRSP6 Antibody Titration: 0.2-1 µg/ml

ELISA Titer: 1:12500

Positive Control: HepG2 cell lysate

MED17 is supported by BioGPS gene expression data to be expressed in HepG2

CRSP6 antibody - N-terminal region - Background

This is a rabbit polyclonal antibody against CRSP6. It was validated on Western Blot and

immunohistochemistry by Abgent. At Abgent we manufacture rabbit polyclonal antibodies on a large scale (200-1000 products/month) of high throughput manner. Our antibodies are peptide based and protein family oriented. We usually provide antibodies covering each member of a whole protein family of your interest. We also use our best efforts to provide you antibodies recognize various epitopes of a target protein. For availability of antibody needed for your experiment, please inquire (sales@abgent.com).