

**ASH2L antibody - middle region**  
**Rabbit Polyclonal Antibody**  
**Catalog # AI10117****Specification**

---

**ASH2L antibody - middle region - Product Information**

Application	IHC, WB
Primary Accession	<a href="#">O9UBL3</a>
Other Accession	<a href="#">O9UBL3</a> , <a href="#">NP_004665</a> , <a href="#">NM_004674</a>
Reactivity	Human, Mouse, Rat, Rabbit, Dog, Guinea Pig, Horse, Bovine
Predicted	Human, Mouse, Rat, Chicken, Dog, Guinea Pig, Horse, Bovine
Host	Rabbit
Clonality	Polyclonal
Calculated MW	69 kDa KDa

**ASH2L antibody - middle region - Additional Information****Gene ID** 9070**Alias Symbol** ASH2, ASH2L1, ASH2L2, Bre2**Other Names**

Set1/Ash2 histone methyltransferase complex subunit ASH2, ASH2-like protein, ASH2L, ASH2L1

**Target/Specificity**

ASH2L is a component of the Set1/Ash2 histone methyltransferase (HMT) complex, a complex that specifically methylates 'Lys-4' of histone H3, but not if the neighboring 'Lys-9' residue is already methylated. The protein may function as a transcriptional regulator and play a role in hematopoiesis.

**Format**

Liquid. Purified antibody supplied in 1x PBS buffer with 0.09% (w/v) sodium azide and 2% sucrose.

**Reconstitution & Storage**

Add 50 ul of distilled water. Final anti-ASH2L antibody concentration is 1 mg/ml in PBS buffer with 2% sucrose. For longer periods of storage, store at -20°C. Avoid repeat freeze-thaw cycles.

**Precautions**

ASH2L antibody - middle region is for research use only and not for use in diagnostic or therapeutic procedures.

**ASH2L antibody - middle region - Protein Information****Name** ASH2L**Synonyms** ASH2L1

**Function**

Transcriptional regulator (PubMed: [12670868](http://www.uniprot.org/citations/12670868)). Component or associated component of some histone methyltransferase complexes which regulates transcription through recruitment of those complexes to gene promoters (PubMed: [19131338](http://www.uniprot.org/citations/19131338)). Component of the Set1/Ash2 histone methyltransferase (HMT) complex, a complex that specifically methylates 'Lys-4' of histone H3, but not if the neighboring 'Lys-9' residue is already methylated (PubMed: [19556245](http://www.uniprot.org/citations/19556245)). As part of the MLL1/MLL complex it is involved in methylation and dimethylation at 'Lys-4' of histone H3 (PubMed: [19556245](http://www.uniprot.org/citations/19556245)). May play a role in hematopoiesis (PubMed: [12670868](http://www.uniprot.org/citations/12670868)). In association with RBBP5 and WDR5, stimulates the histone methyltransferase activities of KMT2A, KMT2B, KMT2C, KMT2D, SETD1A and SETD1B (PubMed: [21220120](http://www.uniprot.org/citations/21220120), PubMed: [22266653](http://www.uniprot.org/citations/22266653)).

**Cellular Location**

Nucleus.

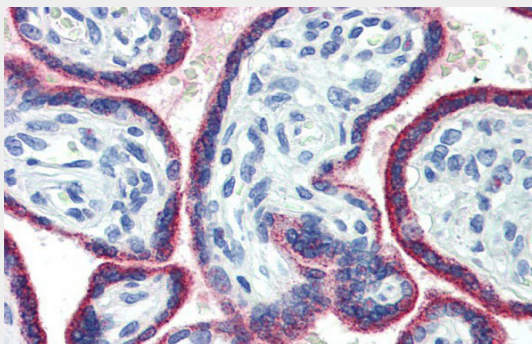
**Tissue Location**

Ubiquitously expressed. Predominantly expressed in adult heart and testis and fetal lung and liver, with barely detectable expression in adult lung, liver, kidney, prostate, and peripheral leukocytes.

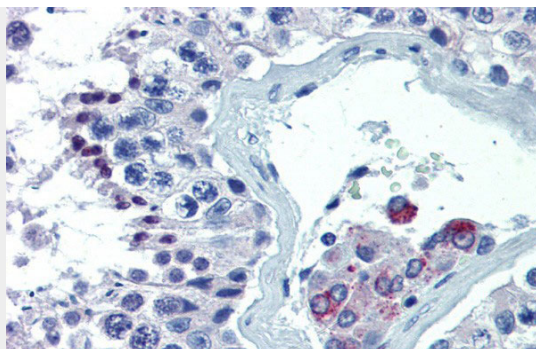
**ASH2L antibody - middle region - Protocols**

Provided below are standard protocols that you may find useful for product applications.

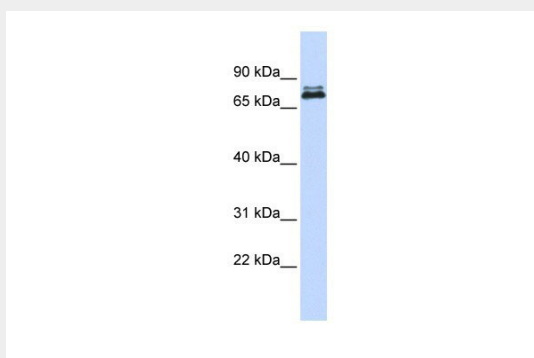
- [Western Blot](#)
- [Blocking Peptides](#)
- [Dot Blot](#)
- [Immunohistochemistry](#)
- [Immunofluorescence](#)
- [Immunoprecipitation](#)
- [Flow Cytometry](#)
- [Cell Culture](#)

**ASH2L antibody - middle region - Images**

ASH2L antibody - middle region (AI10117) in Human Placenta cells using Immunohistochemistry  
Immunohistochemistry with Human Placenta lysate tissue at an antibody concentration of 5.0µg/ml using anti-ASH2L antibody (AI10117)



ASH2L antibody - middle region (AI10117) in Human Testis cells using Immunohistochemistry  
Immunohistochemistry with Human Testis lysate tissue at an antibody concentration of 5.0µg/ml using anti-ASH2L antibody (AI10117)



ASH2L antibody - middle region (AI10117) in Human HeLa cells using Western Blot  
WB Suggested Anti-ASH2L Antibody Titration: 0.2-1 µg/ml  
ELISA Titer: 1:1562500  
Positive Control: Hela cell lysate

### **ASH2L antibody - middle region - Background**

This is a rabbit polyclonal antibody against ASH2L. It was validated on Western Blot using a cell lysate as a positive control. Abgent strives to provide antibodies covering each member of a whole protein family of your interest. We also use our best efforts to provide you antibodies recognize various epitopes of a target protein. For availability of antibody needed for your experiment, please inquire ([sales@abgent.com](mailto:sales@abgent.com)).