

**LRRC14 Antibody - N-terminal region**  
**Rabbit Polyclonal Antibody**  
**Catalog # AI10124****Specification**

---

**LRRC14 Antibody - N-terminal region - Product Information**

Application	WB
Primary Accession	<a href="#">Q15048</a>
Other Accession	<a href="#">Q15048</a> , <a href="#">NP_055480</a> , <a href="#">NM_014665</a>
Reactivity	Human
Predicted	Human
Host	Rabbit
Clonality	Polyclonal
Calculated MW	54 kDa kDa

**LRRC14 Antibody - N-terminal region - Additional Information****Gene ID** 9684**Alias Symbol** **LRRC14****Other Names**

Leucine-rich repeat-containing protein 14, LRRC14, KIAA0014

**Target/Specificity**

LRRC14 belongs to the PRAME family and contains 6 LRR (leucine-rich) repeats

**Format**

Liquid. Purified antibody supplied in 1x PBS buffer with 0.09% (w/v) sodium azide and 2% sucrose.

**Reconstitution & Storage**

Add 50 ul, l of distilled water. Final Anti-LRRC14 antibody concentration is 1 mg/ml in PBS buffer with 2% sucrose. For longer periods of storage, store at -20°C. Avoid repeat freeze-thaw cycles.

**Precautions**

LRRC14 Antibody - N-terminal region is for research use only and not for use in diagnostic or therapeutic procedures.

**LRRC14 Antibody - N-terminal region - Protein Information****Name** LRRC14 ([HGNC:20419](#))**Function**

Negatively regulates Toll-like receptor-mediated NF-kappa-B signaling by disrupting IKK core complex formation through interaction with IKBKB.

**Cellular Location**

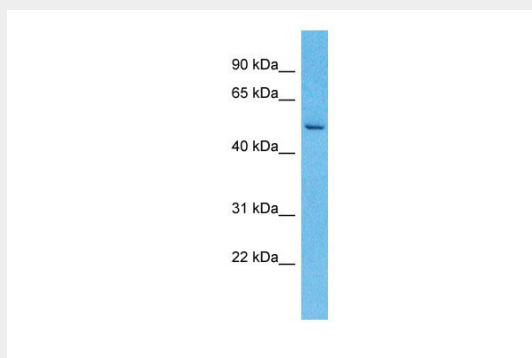
Cytoplasm.

## LRRC14 Antibody - N-terminal region - Protocols

Provided below are standard protocols that you may find useful for product applications.

- [Western Blot](#)
- [Blocking Peptides](#)
- [Dot Blot](#)
- [Immunohistochemistry](#)
- [Immunofluorescence](#)
- [Immunoprecipitation](#)
- [Flow Cytometry](#)
- [Cell Culture](#)

## LRRC14 Antibody - N-terminal region - Images



LRRC14 Antibody - N-terminal region (AI10124) in Human Esophagus Tumor cells using Western Blot

Host: Rabbit

Target Name: LRRC14

Sample Tissue: Esophagus Tumor lysates

Antibody Dilution: 1.0µg/ml

## LRRC14 Antibody - N-terminal region - Background

This is a rabbit polyclonal antibody against LRRC14. It was validated on Western Blot by Abgent. At Abgent we manufacture rabbit polyclonal antibodies on a large scale (200-1000 products/month) of high throughput manner. Our antibodies are peptide based and protein family oriented. We usually provide antibodies covering each member of a whole protein family of your interest. We also use our best efforts to provide you antibodies recognize various epitopes of a target protein. For availability of antibody needed for your experiment, please inquire ([sales@abgent.com](mailto:sales@abgent.com)).