

PHF16 antibody - middle region
Rabbit Polyclonal Antibody
Catalog # AI10126**Specification**

PHF16 antibody - middle region - Product Information

Application	IHC, WB
Primary Accession	O92613
Other Accession	O92613 , NP_055550 , NM_014735
Reactivity	Human, Mouse, Rat, Rabbit, Pig, Dog, Guinea Pig, Horse, Bovine
Predicted	Mouse, Rabbit, Pig, Dog, Guinea Pig, Horse, Bovine
Host	Rabbit
Clonality	Polyclonal
Calculated MW	94 kDa KDa

PHF16 antibody - middle region - Additional Information**Gene ID 9767**

Alias Symbol **JADE3, KIAA0215, MGC138748, MGC138749**

Other Names
Protein Jade-3, Jade family PHD finger protein 3, PHD finger protein 16, JADE3, KIAA0215, PHF16

Target/Specificity

This gene is part of a gene cluster on chromosome Xp11.23. PHF16 contains a zinc finger motif often found in transcriptional regulators, however, its exact function is not known. This gene is part of a gene cluster on chromosome Xp11.23. The encoded protein contains a zinc finger motif often found in transcriptional regulators, however, its exact function is not known. Alternative splicing results in multiple transcript variants encoding the same protein.

Format

Liquid. Purified antibody supplied in 1x PBS buffer with 0.09% (w/v) sodium azide and 2% sucrose.

Reconstitution & Storage

Add 50 ul of distilled water. Final anti-PHF16 antibody concentration is 1 mg/ml in PBS buffer with 2% sucrose. For longer periods of storage, store at -20°C. Avoid repeat freeze-thaw cycles.

Precautions

PHF16 antibody - middle region is for research use only and not for use in diagnostic or therapeutic procedures.

PHF16 antibody - middle region - Protein Information

Name JADE3

Synonyms KIAA0215, PHF16

Function

Scaffold subunit of some HBO1 complexes, which have a histone H4 acetyltransferase activity.

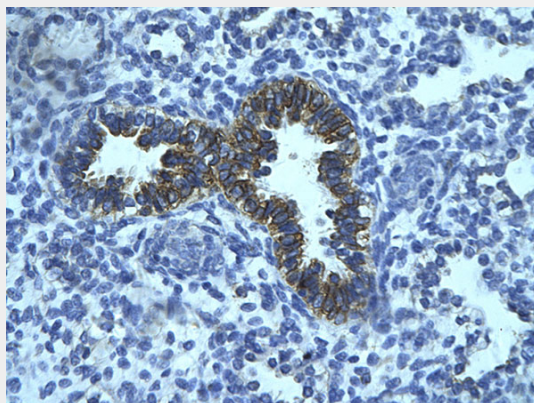
Tissue Location

Ubiquitously expressed, with highest levels in placenta and uterus.

PHF16 antibody - middle region - Protocols

Provided below are standard protocols that you may find useful for product applications.

- [Western Blot](#)
- [Blocking Peptides](#)
- [Dot Blot](#)
- [Immunohistochemistry](#)
- [Immunofluorescence](#)
- [Immunoprecipitation](#)
- [Flow Cytometry](#)
- [Cell Culture](#)

PHF16 antibody - middle region - Images

Human Lung


Rabbit Anti-PHF16 Antibody

Paraffin Embedded Tissue: Human bronchiole epithelium

Cellular Data: Epithelial cells of renal tubule

Antibody Concentration: 4.0-8.0 µg/ml

Magnification: 400X

A Western blot image showing a single, distinct protein band. To the left of the gel, molecular weight markers are indicated: 168 kDa, 144 kDa, 90 kDa, 65 kDa, and 40 kDa. The band is located just below the 90 kDa marker, at approximately 85-90 kDa. The band is dark and well-defined against a light background.

PHF16 antibody - middle region (AI10126) in Human Placenta cells using Western Blot

WB Suggested Anti-PHF16 Antibody Titration: 0.2-1 µg/ml
ELISA Titer: 1:312500
Positive Control: Human Placenta

PHF16 antibody - middle region - Background

This is a rabbit polyclonal antibody against PHF16. It was validated on Western Blot using a cell lysate as a positive control. Abgent strives to provide antibodies covering each member of a whole protein family of your interest. We also use our best efforts to provide you antibodies recognize various epitopes of a target protein. For availability of antibody needed for your experiment, please inquire (sales@abgent.com).