

ZFR antibody - middle region
Rabbit Polyclonal Antibody
Catalog # AI10134**Specification**

ZFR antibody - middle region - Product Information

Application	IHC, WB
Primary Accession	O96KR1
Other Accession	O96KR1 , NP_057191 , NM_016107
Reactivity	Human, Mouse, Rat, Rabbit, Zebrafish, Dog, Horse, Bovine
Predicted	Human, Mouse, Rat, Rabbit, Zebrafish, Dog, Horse, Bovine
Host	Rabbit
Clonality	Polyclonal
Calculated MW	117 kDa KDa

ZFR antibody - middle region - Additional Information**Gene ID** 51663**Alias Symbol** **FLJ41312, ZFR1****Other Names**

Zinc finger RNA-binding protein, hZFR, M-phase phosphoprotein homolog, ZFR

Target/Specificity

ZFR is critical for Staufen 2 isoform specific nucleocytoplasmic shuttling in neurons.

Format

Liquid. Purified antibody supplied in 1x PBS buffer with 0.09% (w/v) sodium azide and 2% sucrose.

Reconstitution & Storage

Add 50 ul of distilled water. Final anti-ZFR antibody concentration is 1 mg/ml in PBS buffer with 2% sucrose. For longer periods of storage, store at -20°C. Avoid repeat freeze-thaw cycles.

Precautions

ZFR antibody - middle region is for research use only and not for use in diagnostic or therapeutic procedures.

ZFR antibody - middle region - Protein Information**Name** ZFR**Function**

Involved in postimplantation and gastrulation stages of development. Involved in the nucleocytoplasmic shuttling of STAU2. Binds to DNA and RNA (By similarity).

Cellular Location

Nucleus. Cytoplasm. Cytoplasmic granule. Chromosome Note=Associated with chromosome foci in meiotic cells. Localizes in somatodendritic compartment of primary hippocampal neurons. Colocalizes with STAU2 in several cytosolic RNA granules (By similarity)

Tissue Location

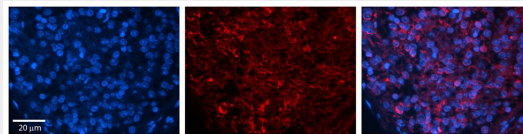
Expressed in lung, liver, lymphocytes, heart, pancreas, placenta, brain and kidney.

ZFR antibody - middle region - Protocols

Provided below are standard protocols that you may find useful for product applications.

- [Western Blot](#)
- [Blocking Peptides](#)
- [Dot Blot](#)
- [Immunohistochemistry](#)
- [Immunofluorescence](#)
- [Immunoprecipitation](#)
- [Flow Cytometry](#)
- [Cell Culture](#)

ZFR antibody - middle region - Images



Rabbit Anti-ZFR Antibody (AI10134)) in Human Pineal Tissue using Immunohistochemistry

Rabbit Anti-ZFR Antibody

Catalog Number: AI10134

Formalin Fixed Paraffin Embedded Tissue: Human Pineal Tissue Observed Staining: Cytoplasmic and nuclear in pinelocytes & interstitial cells

Primary Antibody

Concentration: 1:100 Other Working Concentrations: 1/600

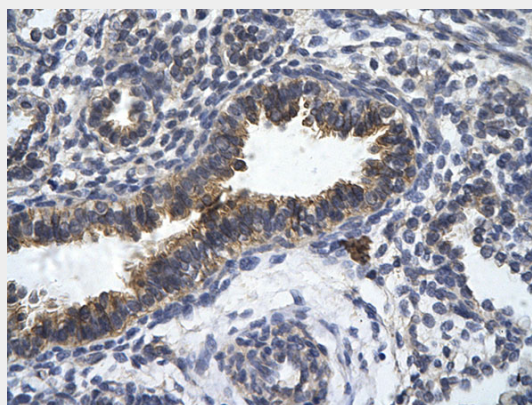
Secondary Antibody: Donkey anti-Rabbit-Cy3

Secondary Antibody

Concentration: 1:200

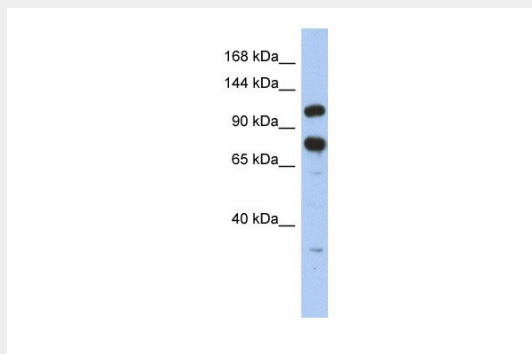
Magnification: 20X

Exposure Time: 0.5 - 2.0 sec



Human Lung

Rabbit Anti-ZFR Antibody
Paraffin Embedded Tissue: Human bronchiole epithelium
Cellular Data: Epithelial cells of renal tubule
Antibody Concentration: 4.0-8.0 µg/ml
Magnification: 400X



ZFR antibody - middle region (AI10134) in Human HT1080 cells using Western Blot
WB Suggested Anti-ZFR Antibody Titration: 0.2-1 µg/ml
ELISA Titer: 1:62500
Positive Control: HT1080 cell lysate
ZFR is strongly supported by BioGPS gene expression data to be expressed in Human HT1080 cells

ZFR antibody - middle region - Background

This is a rabbit polyclonal antibody against ZFR. It was validated on Western Blot using a cell lysate as a positive control. Abgent strives to provide antibodies covering each member of a whole protein family of your interest. We also use our best efforts to provide you antibodies recognize various epitopes of a target protein. For availability of antibody needed for your experiment, please inquire (sales@abgent.com).