

LAS1L Antibody - middle region
Rabbit Polyclonal Antibody
Catalog # AI10141**Specification**

LAS1L Antibody - middle region - Product Information

Application	WB
Primary Accession	O9Y4W2
Other Accession	O9Y4W2 , NP_112483 , NM_031206
Reactivity	Human, Horse, Bovine
Predicted	Human, Horse, Bovine
Host	Rabbit
Clonality	Polyclonal
Calculated MW	83 kDa KDa

LAS1L Antibody - middle region - Additional Information**Gene ID** 81887**Alias Symbol** Las1-like, [dj475B7.2](#)**Other Names**

Ribosomal biogenesis protein LAS1L, Protein LAS1 homolog, LAS1L

Target/Specificity

The function of LAS1L has not been determined.

Format

Liquid. Purified antibody supplied in 1x PBS buffer with 0.09% (w/v) sodium azide and 2% sucrose.

Reconstitution & Storage

Add 50 ul of distilled water. Final anti-LAS1L antibody concentration is 1 mg/ml in PBS buffer with 2% sucrose. For longer periods of storage, store at -20°C. Avoid repeat freeze-thaw cycles.

Precautions

LAS1L Antibody - middle region is for research use only and not for use in diagnostic or therapeutic procedures.

LAS1L Antibody - middle region - Protein Information**Name** LAS1L**Function**

Required for the synthesis of the 60S ribosomal subunit and maturation of the 28S rRNA (PubMed:20647540). Functions as a component of the Five Friends of Methylated CHTOP (5FMC) complex; the 5FMC complex is recruited to ZNF148 by methylated CHTOP, leading to desumoylation of ZNF148 and subsequent transactivation of ZNF148 target genes (PubMed:22872859). Required for

the efficient pre-rRNA processing at both ends of internal transcribed spacer 2 (ITS2) (PubMed:22083961).

Cellular Location

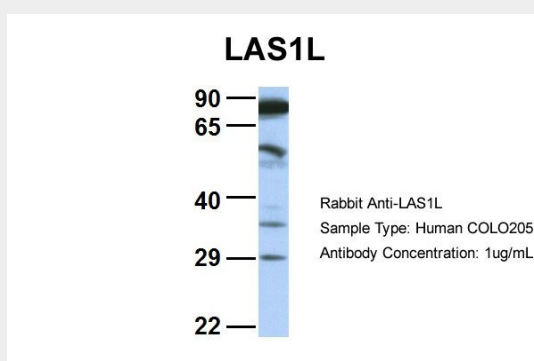
Nucleus, nucleolus. Nucleus, nucleoplasm {ECO:0000250|UniProtKB:A2BE28}. Cytoplasm {ECO:0000250|UniProtKB:A2BE28}. Note=Mainly found in the nucleoplasm, with low levels detected in the cytoplasmic and chromatin fractions (By similarity). Localizes mainly to the granular component, the region implicated in the later steps of rRNA processing and subunit assembly and export. {ECO:0000250|UniProtKB:A2BE28}

LAS1L Antibody - middle region - Protocols

Provided below are standard protocols that you may find useful for product applications.

- [Western Blot](#)
- [Blocking Peptides](#)
- [Dot Blot](#)
- [Immunohistochemistry](#)
- [Immunofluorescence](#)
- [Immunoprecipitation](#)
- [Flow Cytometry](#)
- [Cell Culture](#)

LAS1L Antibody - middle region - Images



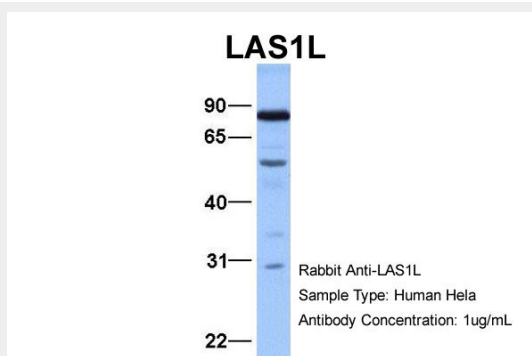
LAS1L Antibody - middle region (A110141) in Human COLO205 cells using Western Blot

Host: Rabbit

Target Name: LAS1L

Sample Tissue: COLO205

Antibody Dilution: 1.0µg/mL LAS1L is supported by BioGPS gene expression data to be expressed in COLO205



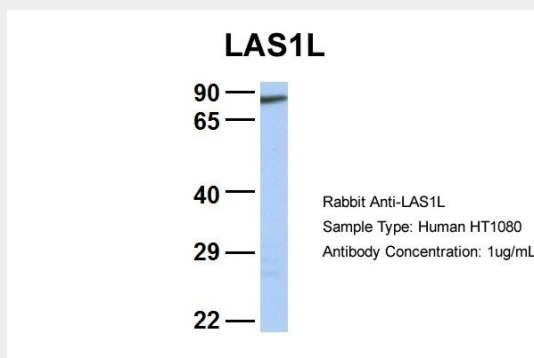
LAS1L Antibody - middle region (AI10141) in Human HeLa cells using Western Blot

Host: Rabbit

Target Name: LAS1L

Sample Tissue: HeLa

Antibody Dilution: 1.0µg/ml LAS1L is supported by BioGPS gene expression data to be expressed in HeLa



LAS1L Antibody - middle region (AI10141) in Human HT1080 cells using Western Blot

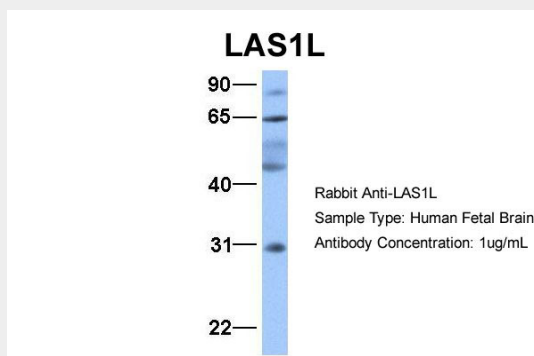
Host: Rabbit

Target Name: LAS1L

Sample Tissue: HT1080

Antibody Dilution: 1.0µg/ml

LAS1L is supported by BioGPS gene expression data to be expressed in HT1080



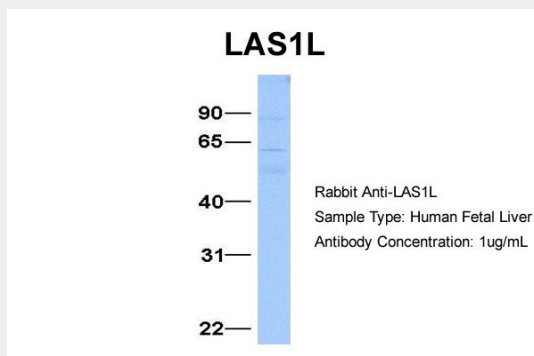
LAS1L Antibody - middle region (AI10141) in Hum. Fetal Brain cells using Western Blot

Host: Rabbit

Target Name: LAS1L

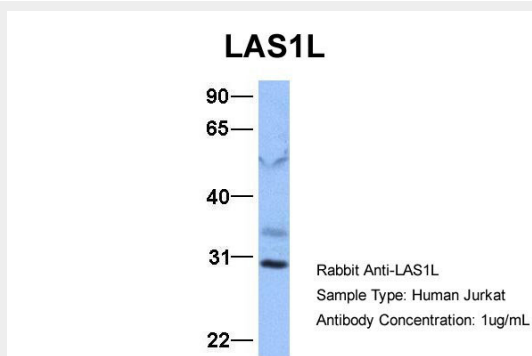
Sample Tissue: Human Fetal Brain

Antibody Dilution: 1.0µg/ml



LAS1L Antibody - middle region (AI10141) in Hum. Fetal Liver cells using Western Blot

Host: Rabbit
Target Name: LAS1L
Sample Tissue: Human Fetal Liver
Antibody Dilution: 1.0µg/ml



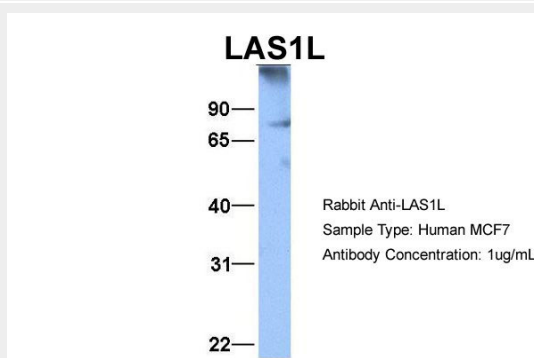
LAS1L Antibody - middle region (AI10141) in Human Jurkat cells using Western Blot

Host: Rabbit

Target Name: LAS1L

Sample Tissue: Jurkat

Antibody Dilution: 1.0µg/mL LAS1L is supported by BioGPS gene expression data to be expressed in Jurkat



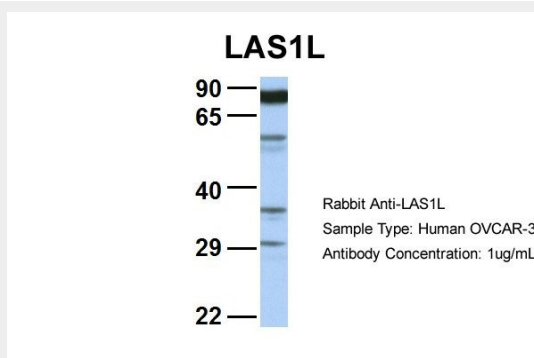
LAS1L Antibody - middle region (AI10141) in Human MCF7 cells using Western Blot

Host: Rabbit

Target Name: LAS1L

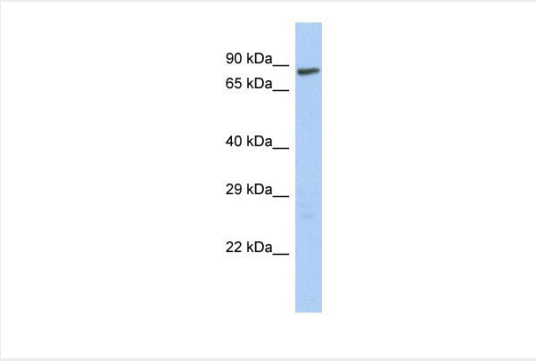
Sample Tissue: MCF7

Antibody Dilution: 1.0µg/mL LAS1L is supported by BioGPS gene expression data to be expressed in MCF7



LAS1L Antibody - middle region (AI10141) in Human OVCAR-3 cells using Western Blot

Host: Rabbit Target Name: LAS1L Sample Tissue: OVCAR-3 Antibody Dilution: 1.0ug/mL LAS1L is supported by BioGPS gene expression data to be expressed in OVCAR3



90 kDa__
65 kDa__
40 kDa__
29 kDa__
22 kDa__

LAS1L Antibody - middle region (AI10141) in Human HepG2 cells using Western Blot
WB Suggested Anti-LAS1L Antibody Titration: 0.2-1 ug/ml Positive Control: HepG2 cell lysate

LAS1L Antibody - middle region - Background

This is a rabbit polyclonal antibody against LAS1L. It was validated on Western Blot by Abgent. At Abgent we manufacture rabbit polyclonal antibodies on a large scale (200-1000 products/month) of high throughput manner. Our antibodies are peptide based and protein family oriented. We usually provide antibodies covering each member of a whole protein family of your interest. We also use our best efforts to provide you antibodies recognize various epitopes of a target protein. For availability of antibody needed for your experiment, please inquire (sales@abgent.com).