

RIMS3 antibody - C-terminal region
Rabbit Polyclonal Antibody
Catalog # AI10145**Specification**

RIMS3 antibody - C-terminal region - Product Information

Application	IHC, WB
Primary Accession	O9UJD0
Other Accession	O9UJD0 , NP_055562 , NM_014747
Reactivity	Human, Mouse, Rat, Rabbit, Zebrafish, Dog, Guinea Pig, Horse, Bovine
Predicted	Human, Mouse, Rat, Rabbit, Zebrafish, Pig, Chicken, Dog, Bovine
Host	Rabbit
Clonality	Polyclonal
Calculated MW	33 kDa KDa

RIMS3 antibody - C-terminal region - Additional Information**Gene ID** 9783**Alias Symbol** **NIM3, RIM3****Other Names**

Regulating synaptic membrane exocytosis protein 3, Nim3, RIM3 gamma, Rab-3-interacting molecule 3, RIM 3, RIMS3, KIAA0237

Target/Specificity

RIMS3 belongs to a family of synaptic proteins that are essential for normal neurotransmitter release.

Format

Liquid. Purified antibody supplied in 1x PBS buffer with 0.09% (w/v) sodium azide and 2% sucrose.

Reconstitution & Storage

Add 100 ul of distilled water. Final anti-RIMS3 antibody concentration is 1 mg/ml in PBS buffer with 2% sucrose. For longer periods of storage, store at -20°C. Avoid repeat freeze-thaw cycles.

Precautions

RIMS3 antibody - C-terminal region is for research use only and not for use in diagnostic or therapeutic procedures.

RIMS3 antibody - C-terminal region - Protein Information**Name** RIMS3**Synonyms** KIAA0237**Function**

Regulates synaptic membrane exocytosis.

Cellular Location

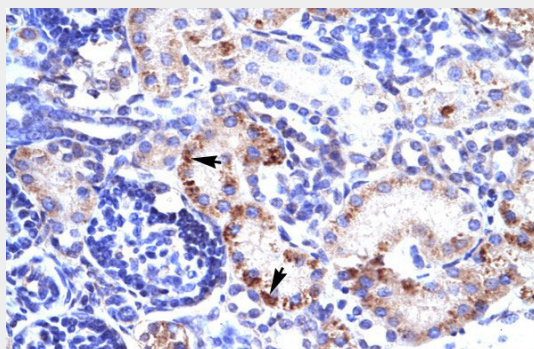
Synapse.

RIMS3 antibody - C-terminal region - Protocols

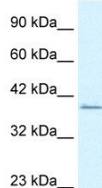
Provided below are standard protocols that you may find useful for product applications.

- [Western Blot](#)
- [Blocking Peptides](#)
- [Dot Blot](#)
- [Immunohistochemistry](#)
- [Immunofluorescence](#)
- [Immunoprecipitation](#)
- [Flow Cytometry](#)
- [Cell Culture](#)

RIMS3 antibody - C-terminal region - Images



RIMS3 antibody - C-terminal region (AI10145) in Human kidney cells using Immunohistochemistry
Human kidney



RIMS3 antibody - C-terminal region (AI10145) in Human Jurkat cells using Western Blot

WB Suggested Anti-RIMS3 Antibody Titration: 1.25µg/ml

ELISA Titer: 1:312500

Positive Control: Jurkat cell lysate

RIMS3 is strongly supported by BioGPS gene expression data to be expressed in Human Jurkat cells

RIMS3 antibody - C-terminal region - Background

This is a rabbit polyclonal antibody against RIMS3. It was validated on Western Blot and immunohistochemistry by Abgent. At Abgent we manufacture rabbit polyclonal antibodies on a large scale (200-1000 products/month) of high throughput manner. Our antibodies are peptide based and protein family oriented. We usually provide antibodies covering each member of a whole protein family of your interest. We also use our best efforts to provide you antibodies recognize various epitopes of a target protein. For availability of antibody needed for your experiment, please inquire (sales@abgent.com).